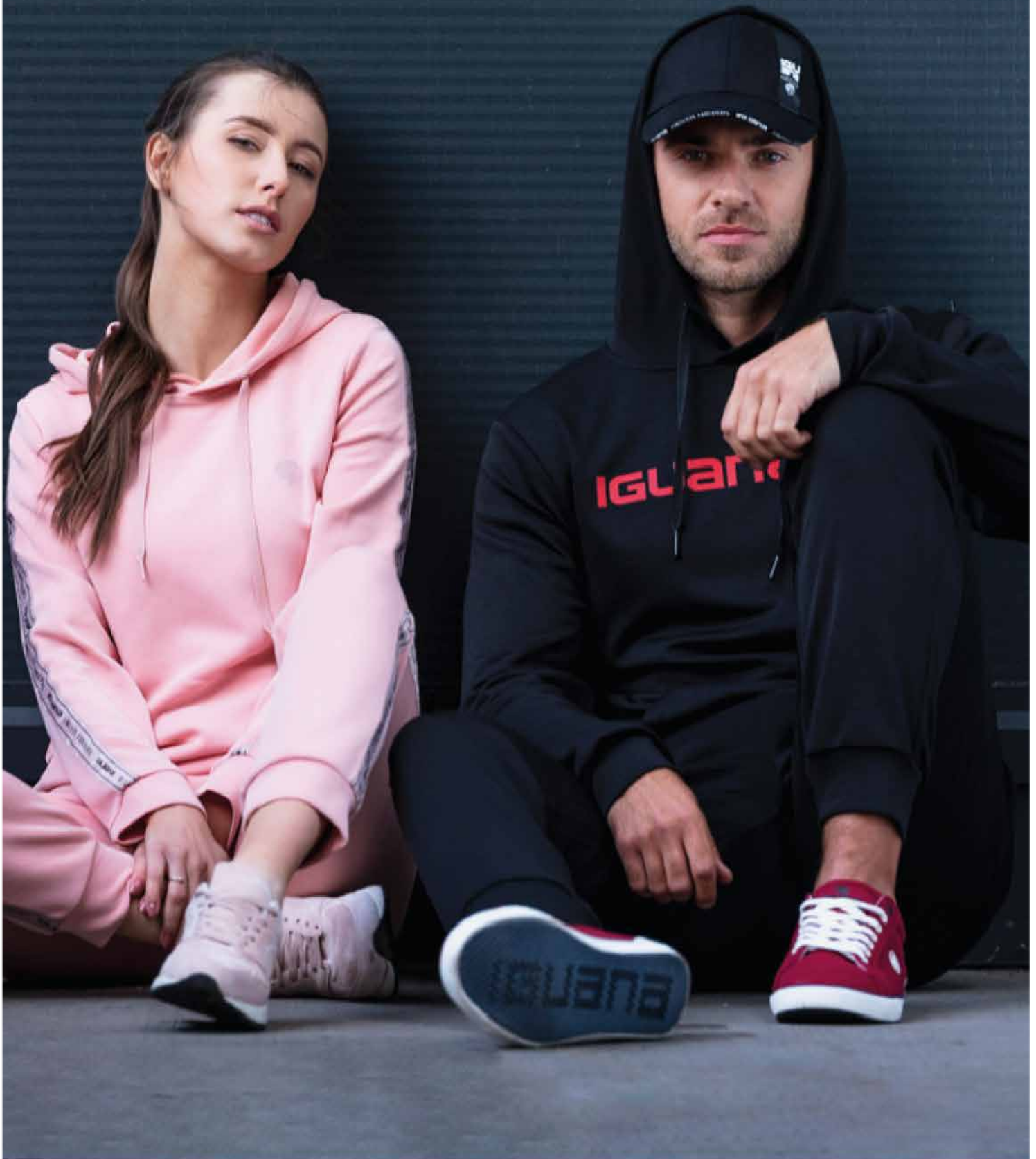


IGUANA 

CATALOGUE

SS 23



OUTDOOR APPAREL



WATERPROOF Water resistance is a feature that specifies the resistance of a given laminate to water. Water resistance parameters are given in millimetres water column, which specifies the maximum amount of water against which the laminate is able to protect us. The higher the water resistance value, the more resistant is the material to leaking.



BREATHABILITY Breathability is given in grams of water vapour which the laminate is able to discharge to the 1 m² surface within 24h. The higher this value, the better the breathability of the laminate.



2-LAYER LAMINATION The membrane is laminated with outer layer, and from the inner side it is connected to separate lining.



2.5-LAYER LAMINATION The membrane is connected with outer layer and from the inner side there is additional print applied to the lamination.



3-LAYER LAMINATION The membrane, inner and outer side are laminated together.



DWR COATING DWR (DURABLE WATER REPELLENT) - top treatment applied to fabrics to ensure high water resistance. Thanks to the additional hydrophobic coating water droplets are suspended and roll off the outer layer of the fabric.



2 IN 1 PANTS Possibility to attach the legs ensures adaptability to weather conditions.



FEATHERS/DOWN Feather, down or mix filling provides lightness and excellent thermal insulation properties of clothing.



TAPED SEAMS Taped seams provide higher water resistance parameters.



WATERPROOF ZIPPER Zippers covered with additional laminate provide better protection of the clothing against soaking.



YKK ZIPPER High quality zippers providing class leading strength and reliability.



TWO-WAY ZIPPER The zipper allows zip up clothes in two directions.



4 WAY STRETCH Stretchy material which significantly increases your comfort and does not constrain your movements due to its 4-direction elasticity.



RIP STOP Fabric reinforced with additional strong fibre ensures the resistance of the fabric to chafing and tear.



VENTILATION Ventilation openings in the clothing are responsible for proper air circulation and evaporation of moisture on the outside.



LEGS ZIPPED Zippers in trouser legs make it easier to put on and take off your shoes.



POWDER SKIRT Powder skirt prevents snow from getting under the outer layer of the clothing and retains the heat inside the jacket.



LEGS POWDER SKIRT Internal powder skirts in the legs protect against the ingress of snow under the pants and into the shoes, thus protecting against heat loss.



REMOVABLE HOOD Possibility to remove the hood.



REMOVABLE BRACES Possibility to remove the braces.



SKIPASS POCKET Comfortable pocket located in the sleeve of the jacket allows for quick and efficient use of the skipass.



DRY POCKET The practical pocket inside the jacket protects the items by getting wet.



THUMB HOLES Internal, elastic cuffs with thumb holes protect hands against cold and keep heat inside the jacket.



REFLECTIVE ELEMENTS Reflective elements increase safety during active leisure.



QUICKDRY Synthetic materials are characterised by a short drying time, which ensures comfort during and after exercise.



MICROFLEECE LINED Microfleece lining increases the thermal comfort of the clothing.



ORGANIC COTTON Cotton that is grown organically without the use of any synthetic fertilizers or other hazardous agricultural chemicals.

THERMOACTIVE UNDERWEAR



AIRWAY Used synthetic materials ensure free air flow, which provides the user with a feeling of comfort while practicing various physical activities.



QUICKDRY Synthetic materials are characterised by a short drying time, which ensures comfort during and after exercise.



SEAMLESS Seamless clothing provides a very good moisture transport, while ensuring dryness and maintaining thermal comfort regardless of the level of activity.

APPAREL ACCESSORIES



AIRWAY Used synthetic materials ensure free air flow, which provides the user with a feeling of comfort while practicing various physical activities.



QUICKDRY Synthetic materials are characterised by a short drying time, which ensures comfort during and after exercise.



WATERPROOF The plastic layer (PE or TPU) between the shell and insulation ensures waterproofness.



WINDPROOF The material that ensures windproofness.



WOOL Natural fiber is characterized by excellent thermal insulation properties.



MICROFLEECE LINED Microfleece lining increases the thermal comfort of the clothing.



WRIST ELASTIC STRAPS Comfortable, flexible wristbands are a practical solution when practicing winter sports.



REFLECTIVE ELEMENTS Reflective elements increase safety during active leisure.



SEAMLESS No seams or their minimization in the clothing provides comfort and convenience of use and eliminates the possibility of abrasions during physical activity.



3-PACK Set of three pieces



MERINO WOOL Merino wool provides thermal comfort during exercise. It is lightweight, quick-dry, and keeps fresh longer. Provides comfort owing to the delicate and fine thread structure.

SHOES



WARM BOOTS Shoes insulated from the inside.



WATERPROOF MEMBRANE Waterproof, windproof, and breathable membrane sock inside the shoe provides optimum performance and comfort. The membrane allows free circulation of water vapour, reducing its condensation inside the shoe and ensures protection of the shoe against rain and snow, thereby maintaining the thermal comfort of feet during exercise.



LEATHER Shoes made of leather are breathable and soft, and adapt to the shape of the foot. Owing to these properties, they are more comfortable and breathable.



ACTION LEATHER Type of leather, characterized by high air permeability and high resistance to scratches and scrapes. Action leather is covered with polyurethane finish, thanks to which shoes adapt to your feet, protect against water and do not stretch excessively.



SYNTHETIC MATERIAL Shoes made of a synthetic material (PVC, PU, TPU, rubber) are easy to maintain, offer a large range of colours and designs.



KNITTING Shoes made of knitted textile perfectly fitting to your feet. They are lightweight and breathable.



TEXTILE This fabric is based on a network of natural and artificial fibers - footwear utilising it proves to be lighter and more breathable.



MESH Synthetic mesh provides excellent breathability of the footwear. Owing to this, the footwear is lighter and quickly discharges moisture to the outside of the upper.



RB RUBBER Sole made of RB rubber is slip resistant, flexible, and waterproof. It perfectly insulates the foot from the ground, which significantly increases thermal comfort on cold days.



TPR RUBBER Thermoplastic rubber is characterised by high strength and resistance to low temperatures. The sole made of this material is durable and wear resistant.



EVA PHYLON Thanks to innovative manufacturing technology, EVA Phylon foam is extremely light, flexible and has excellent cushioning properties.



EVA FOAM EVA foam adapts perfectly to the foot. It is lightweight and flexible, thereby providing excellent cushioning while maintaining a small weight.



HI-POLY Breathable, lightweight and antibacterial foam. Perfect shock-resistance and comfort.



REMOVABLE INSOLE The possibility of removing the insole.



SPARE SHOELACES Additional pair of shoelaces.



REFLECTIVE ELEMENTS Reflective elements increase safety during active leisure.

SHOES ACCESSORIES



MEMORY FOAM INSOLE Memory foam applied in the insole of the sports shoes adapts to the foot shape, ensuring comfort and support.

IMPREGNATION / CLEANING / CARE AGENT



CLEANING AGENT Active substances contained in the line of cleaning agents intensively clean and protect dirty surfaces. They renew the original properties of cleaned surfaces and prepare them for impregnation.



CARE AGENT The line of care agent nourishes, restores color and refreshes the structure of the material.



IMPREGNATION AGENT The impregnation agent form a layer resistant to water and dirt, without blocking the air permeability of materials.



DEODORANT Refreshes and prevents the formation of unpleasant odors inside the footwear.



CLOTHING EQUIPMENT / ACCESSORIES SHOES Assortment group dedicated to cleaning, conditioning and impregnating agents.



WASHING MACHINE Cleaning and impregnating agents intended for washing in a washing machine.

OUTDOOR ACCESSORIES

TRAVEL



TSA LOCK Thanks to TSA (Travel Sentry Approved) system, the customs agents will use a master key or code to search your luggage without damaging the lock.

SKI ACCESSORIES

GOGGLES



UV400 UV400 filter ensures 100% protection against UVA and UVB solar radiation.



UV FILTER The filter category determines the degree of light permeability. The higher the category, the lower the light permeability. Category 3 means 8-18% light permeability. Cat. 2: 18-43%, cat. 1: 43-80%, cat. 0: 80-100%.



POLY CARBONATE The poly-carbonate from which the lenses are made is a durable, unbreakable material, resistant to scratches and UV radiation.



REVO The REVO coating perfectly reflects ultraviolet radiation, eliminates reflections, improves contrast and gives the lenses a characteristic rainbow color.

OUTDOOR APPAREL



WATERPROOF Water resistance is a feature that specifies the resistance of a given laminate to water. Water resistance parameters are given in millimetres water column, which specifies the maximum amount of water against which the laminate is able to protect us. The higher the water resistance value, the more resistant is the material to leaking.



BREATHABILITY Breathability is given in grams of water vapour which the laminate is able to discharge to the 1 m² surface within 24h. The higher this value, the better the breathability of the laminate.



2-LAYER LAMINATION The membrane is laminated with outer layer, and from the inner side it is connected to separate lining.



2.5-LAYER LAMINATION The membrane is connected with outer layer and from the inner side there is additional print applied to the lamination.



3-LAYER LAMINATION The membrane, inner and outer side are laminated together.



DWR COATING DWR (DURABLE WATER REPELLENT) - top treatment applied to fabrics to ensure high water resistance. Thanks to the additional hydrophobic coating water droplets are suspended and roll off the outer layer of the fabric.



2 IN 1 PANTS Possibility to attach the legs ensures adaptability to weather conditions.



FEATHERS/DOWN Feather, down or mix filling provides lightness and excellent thermal insulation properties of clothing.



TAPED SEAMS Taped seams provide higher water resistance parameters.



WATERPROOF ZIPPER Zippers covered with additional laminate provide better protection of the clothing against soaking.



YKK ZIPPER High quality zippers providing class leading strength and reliability.



TWO-WAY ZIPPER The zipper allows zip up clothes in two directions.



4 WAY STRETCH Stretchy material which significantly increases your comfort and does not constrain your movements due to its 4-direction elasticity.



RIP STOP Fabric reinforced with additional strong fibre ensures the resistance of the fabric to chafing and tear.



VENTILATION Ventilation openings in the clothing are responsible for proper air circulation and evaporation of moisture on the outside.



LEGS ZIPPED Zippers in trouser legs make it easier to put on and take off your shoes.



POWDER SKIRT Powder skirt prevents snow from getting under the outer layer of the clothing and retains the heat inside the jacket.



LEGS POWDER SKIRT Internal powder skirts in the legs protect against the ingress of snow under the pants and into the shoes, thus protecting against heat loss.



REMOVABLE HOOD Possibility to remove the hood.



REMOVABLE BRACES Possibility to remove the braces.



SKIPASS POCKET Comfortable pocket located in the sleeve of the jacket allows for quick and efficient use of the skipass.



DRY POCKET The practical pocket inside the jacket protects the items by getting wet.



THUMB HOLES Internal, elastic cuffs with thumb holes protect hands against cold and keep heat inside the jacket.



REFLECTIVE ELEMENTS Reflective elements increase safety during active leisure.



QUICKDRY Synthetic materials are characterised by a short drying time, which ensures comfort during and after exercise.



MICROFLEECE LINED Microfleece lining increases the thermal comfort of the clothing.



ORGANIC COTTON Cotton that is grown organically without the use of any synthetic fertilizers or other hazardous agricultural chemicals.

THERMOACTIVE UNDERWEAR



AIRWAY Used synthetic materials ensure free air flow, which provides the user with a feeling of comfort while practicing various physical activities.



QUICKDRY Synthetic materials are characterised by a short drying time, which ensures comfort during and after exercise.



SEAMLESS Seamless clothing provides a very good moisture transport, while ensuring dryness and maintaining thermal comfort regardless of the level of activity.

APPAREL ACCESSORIES



AIRWAY Used synthetic materials ensure free air flow, which provides the user with a feeling of comfort while practicing various physical activities.



QUICKDRY Synthetic materials are characterised by a short drying time, which ensures comfort during and after exercise.



WATERPROOF The plastic layer (PE or TPU) between the shell and insulation ensures waterproofness.



WINDPROOF The material that ensures windproofness.



WOOL Natural fiber is characterized by excellent thermal insulation properties.



MICROFLEECE LINED Microfleece lining increases the thermal comfort of the clothing.



WRIST ELASTIC STRAPS Comfortable, flexible wristbands are a practical solution when practicing winter sports.



REFLECTIVE ELEMENTS Reflective elements increase safety during active leisure.



SEAMLESS No seams or their minimization in the clothing provides comfort and convenience of use and eliminates the possibility of abrasions during physical activity.



3-PACK Set of three pieces



MERINO WOOL Merino wool provides thermal comfort during exercise. It is lightweight, quick-dry, and keeps fresh longer. Provides comfort owing to the delicate and fine thread structure.

SHOES



WARM BOOTS Shoes insulated from the inside.



WATERPROOF MEMBRANE Waterproof, windproof, and breathable membrane sock inside the shoe provides optimum performance and comfort. The membrane allows free circulation of water vapour, reducing its condensation inside the shoe and ensures protection of the shoe against rain and snow, thereby maintaining the thermal comfort of feet during exercise.



LEATHER Shoes made of leather are breathable and soft, and adapt to the shape of the foot. Owing to these properties, they are more comfortable and breathable.



ACTION LEATHER Type of leather, characterized by high air permeability and high resistance to scratches and scrapes. Action leather is covered with polyurethane finish, thanks to which shoes adapt to your feet, protect against water and do not stretch excessively.



SYNTHETIC MATERIAL Shoes made of a synthetic material (PVC, PU, TPU, rubber) are easy to maintain, offer a large range of colours and designs.



KNITTING Shoes made of knitted textile perfectly fitting to your feet. They are lightweight and breathable.



TEXTILE This fabric is based on a network of natural and artificial fibers - footwear utilising it proves to be lighter and more breathable.



MESH Synthetic mesh provides excellent breathability of the footwear. Owing to this, the footwear is lighter and quickly discharges moisture to the outside of the upper.



RB RUBBER Sole made of RB rubber is slip resistant, flexible, and waterproof. It perfectly insulates the foot from the ground, which significantly increases thermal comfort on cold days.



TPR RUBBER Thermoplastic rubber is characterised by high strength and resistance to low temperatures. The sole made of this material is durable and wear resistant.



EVA PHYLON Thanks to innovative manufacturing technology, EVA Phylon foam is extremely light, flexible and has excellent cushioning properties.



EVA FOAM EVA foam adapts perfectly to the foot. It is lightweight and flexible, thereby providing excellent cushioning while maintaining a small weight.



HI-POLY Breathable, lightweight and antibacterial foam. Perfect shock-resistance and comfort.



REMOVABLE INSOLE The possibility of removing the insole.



SPARE SHOELACES Additional pair of shoelaces.



REFLECTIVE ELEMENTS Reflective elements increase safety during active leisure.

SHOES ACCESSORIES



MEMORY FOAM INSOLE Memory foam applied in the insole of the sports shoes adapts to the foot shape, ensuring comfort and support.

IMPREGNATION / CLEANING / CARE AGENT



CLEANING AGENT Active substances contained in the line of cleaning agents intensively clean and protect dirty surfaces. They renew the original properties of cleaned surfaces and prepare them for impregnation.



CARE AGENT The line of care agent nourishes, restores color and refreshes the structure of the material.



IMPREGNATION AGENT The impregnation agent form a layer resistant to water and dirt, without blocking the air permeability of materials.



DEODORANT Refreshes and prevents the formation of unpleasant odors inside the footwear.



CLOTHING EQUIPMENT / ACCESSORIES SHOES Assortment group dedicated to cleaning, conditioning and impregnating agents.



WASHING MACHINE Cleaning and impregnating agents intended for washing in a washing machine.

OUTDOOR ACCESSORIES

TRAVEL



TSA LOCK Thanks to TSA (Travel Sentry Approved) system, the customs agents will use a master key or code to search your luggage without damaging the lock.

SKI ACCESSORIES

GOGGLES



UV400 UV400 filter ensures 100% protection against UVA and UVB solar radiation.



UV FILTER The filter category determines the degree of light permeability. The higher the category, the lower the light permeability. Category 3 means 8-18% light permeability. Cat. 2: 18-43%, cat. 1: 43-80%, cat. 0: 80-100%.



POLY CARBONATE The polycarbonate from which the lenses are made is a durable, unbreakable material, resistant to scratches and UV radiation.



REVO The REVO coating perfectly reflects ultraviolet radiation, eliminates reflections, improves contrast and gives the lenses a characteristic rainbow color.



DOUBLE LENS Dual lens technology prevents condensation inside the goggles.



VENTILATION The ventilation holes additionally support the transmission of water vapor outside the goggles.



ANTI FOG Additional coating prevents evaporation and significantly improves visual comfort.

SKI HELMETS



IN-MOULD Protective material is foamed directly into the helmet shell. It allows inseparably bonded inner and outer shell, ensuring durability and robustness.



OUT-MOULD The outer and inner shell is not inseparably bonded. The outer material (hard shell) effectively absorbs the energy and the impact force is further minimized by the foam.



HARD SHELL Out-mold technology, using ABS material as the outer layer of the helmet. ABS guarantees resistance and reliability of the helmet.



ADJUSTABLE SYSTEM System allowing for individual adjustment of the helmet size with the use of a knob.



VENTILATION HOLES The ventilation holes in the helmet guarantee free air flow. The more holes there are, the faster the removal of moisture outside the helmet and thus higher comfort while driving.



VENTI SWITCH The function of quick opening or closing of ventilation holes in the helmet ensures optimal adjustment of the helmet to



STRAP HOLDER A clip keeping goggle's strip in a correct position.



REMOVABLE PADS Removable pads in the helmet allow for keeping them clean.

BAGGAGE

BACKPACK / BAG ETC.



ERGONOMIC BACK Soft filling of the back panels ensures comfort and precise fit of the backpack, even under heavy load.



ORGANIZER Built-in pocket with multiple compartments is a perfect organiser for pens, notepad, and other small items.



LAPTOP POCKET Built-in laptop pocket or compartment.



AUDIO SYSTEM Opening in the backpack or in the bag for a headphone cable, allowing the use of an mp3 player or other audio equipment.



WATERPROOF ZIPPER Zippers covered with additional laminate provide better protection of against soaking.



REFLECTIVE ELEMENTS Reflective elements increase safety during active leisure.

NAVY II
SS22



SUN-DRIED TOMATO

BENNE
NEW



BLACK

MARCHO
AW21



BLACK

SCONE
AW22



SUN-DRIED TOMATO/ AURA ORANGE

AVILO
NEW



BLACK/SUN-DRIED TOMATO

LESORI
NEW



BLACK

HARPER
AW22



BLACK

TONNY
NEW



EXOTIC ORANGE

MAUNU
NEW



BLACK

GORDON II
SS22



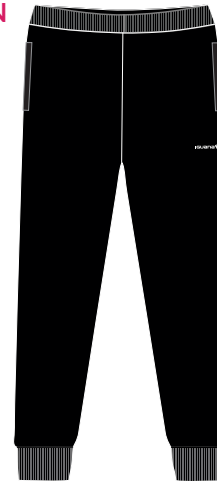
BANANA

SOFLIN II
NEW



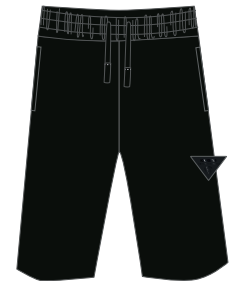
OMPHALODES

HOBAN
NEW



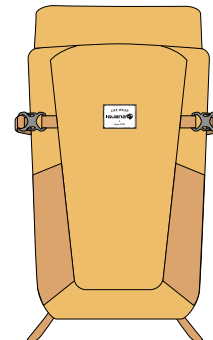
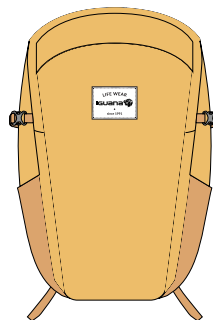
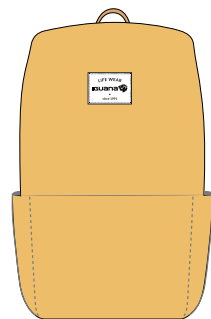
BLACK

HIBAN
NEW



BLACK

19 -1531 TCX Sun-dried Tomato	Black
16 -1453 TCX Exotic Orange	16 - 0953 TCX Tawny Olive



LEONIA W
AW22



BLACK

MARCHA W
AW22



BLACK



WOODROSE

SCONE W
AW22



LOANNA W
AW22



BLANCA W
AW22



LENAJ W
NEW



BLACK

LARITA W
NEW



CRYSTAL GRAY



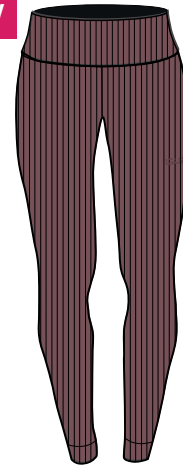
ROSE BROWN

SLEDI W
NEW



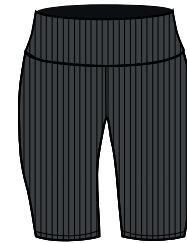
BLACK

LAUNO W
NEW



ROSE BROWN

LANCA W
NEW



MAGNET

HEVER SHORTS W
NEW



ROSE BROWN

16 - 1806 TCX Woodrose	Black
13 - 3801 TCX Crystal Gray	16 - 0953 TCX Rose Brown



NAVY II LIGHT JACKET

SIZE: M-XXL

MATERIAL COMPOSITION:

SHELL: 100% POLYESTER

LINING: 100% POLYESTER

SPECIFICATION:

- WATERPROOF 10 000 mm H₂O
- BREATHABILITY 5 000 g H₂O/m²
- 2L MEMBRANE
- DWR COATING
- WATERPROOF ZIPPERS
- TAPED SEAMS
- YKK ZIPPER
- VENTILATION
- REFLECTIVE ELEMENTS



SUN-DRIED TOMATO

BENNE LIGHT JACKET

SIZE: S-XXL

MATERIAL COMPOSITION: 100% POLYESTER, 117g/m²
LINING: 100% POLYESTER, MESH, 95g/m²

SPECIFICATION:

- WATERPROOF: 10 000 mm H₂O
- BREATHABILITY: 5 000 g/H₂O/m²
- WINDPROOF
- 2-LAYER LAMINATION
- TAPED SEAMS
- DWR COATING
- SBS ZIPPER
- RIP STOP
- REFLECTIVE ELEMENTS
- ACTIVGUARD PLUS TECHNOLOGY

CERTIFICATES: OEKO-TEX



BLACK

NEW PRODUCT

 **ActivGuard PLUS**

OEKO-TEX®
CONFIDENCE IN TEXTILES
STANDARD 100
IW 00004 IW
Zbadane na substancje szkodliwe.
www.oeko-tex.com/standard100

MARCHO QUILTED JACKET

SIZE: S-XXL

MATERIAL COMPOSITION:

SHELL: 100% NYLON

LINING: 100% NYLON

FILLING: 100% DUCK DOWN, 40 g/m²

SPECIFICATION:

- YKK ZIPPER



BLACK



SALUTE

BLANCO QUILTED JACKET

SIZE: S-XXL

MATERIAL COMPOSITION:

SHELL: 100% NYLON

LINING: 100% NYLON

FILLING: 100% DOWN, 40 g/m²

SPECIFICATION:

- YKK ZIPPER



BLACK

BLANCO VEST VEST

SIZE: S-XXL

MATERIAL COMPOSITION:

SHELL: 100% NYLON

LINING: 100% NYLON

FILLING: 100% DOWN, 40 g/m²

SPECIFICATION:

SPECIFICATION:

- YKK ZIPPER



SALUTE

SELVA II BLOUSE

SIZE: M-XXL

MATERIAL COMPOSITION:

SHELL: 100% NYLON / 93% POLYESTER,
7% ELASTANE, 220 g/m²

SPECIFICATION:

- YKK ZIPPER
- MICROFLEECE LINED
- THUMB HOLES
- REFLECTIVE ELEMENTS



BLACK/YARROW

SCONE BLOUSE

SIZE: S-XXL

MATERIAL COMPOSITION:

SHELL: 100% POLYESTER, 100% NYLON

LINING: 92% POLYESTER, 8% ELASTANE

SPECIFICATION:

- YKK® ZIPPER
- THUMB HOLES
- REFLECTIVE ELEMENTS

CERTIFICATES: OEKO-TEX®



SUN-DRIED TOMATO/AURA ORANGE



AMANO OUTDOOR PANTS

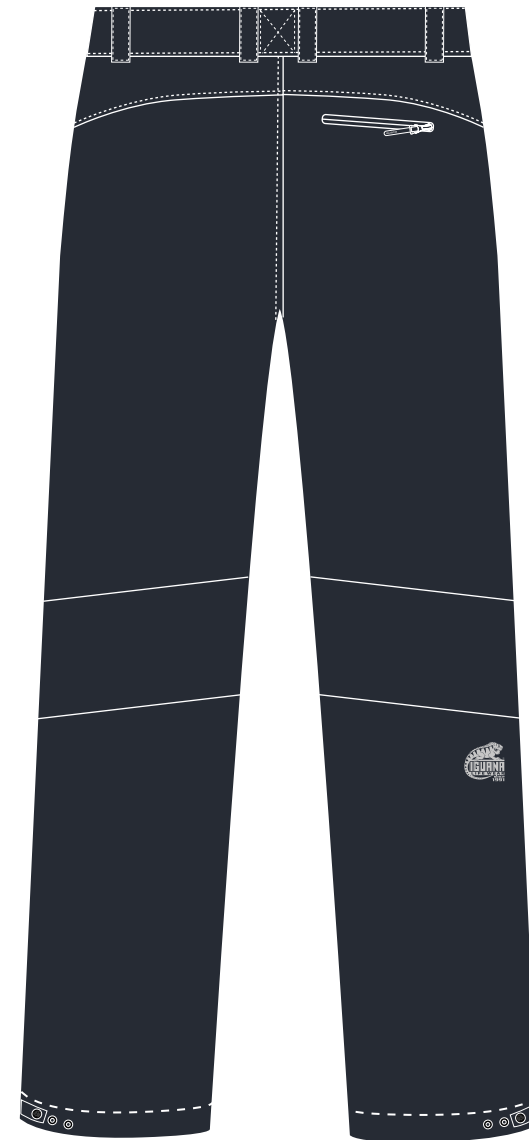
SIZE: M-XXL

MATERIAL COMPOSITION:
SHELL: 100% POLYESTER

SPECIFICATION:
- WATERPROOF 8 000 mm H₂O
- BREATHABILITY 1 000 g H₂O/m²
- REFLECTIVE ELEMENTS



SALUTE



AVILO PANTS

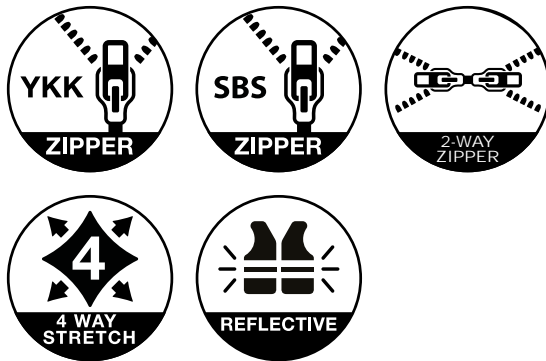
SIZE: S-XXL

MATERIAL COMPOSITION: 96% POLYESTER, 4% ELASTANE / 92% POLYESTER, 8% ELASTANE

SPECIFICATION:

- YKK ZIPPER
- SBS ZIPPER
- TWO- WAY ZIPPER
- 4 WAY STRETCH
- REFLECTIVE ELEMENTS

CERTIFICATES: OEKO-TEX



BLACK/ SUN-DRIED TOMATO

NEW PRODUCT

 **VIKKIN** OUTDOOR SHORTS

SIZE: S-XXL

MATERIAL COMPOSITION:
SHELL: 65% POLYESTER, 35% COTTON



BITTER CHOCOLATE

 **LESORI** SHORTS

SIZE: S-2XL

MATERIAL COMPOSITION: 97% COTTON, 3%
ELASTANE



BLACK

NEW PRODUCT

LOA W LIGHT JACKET

SIZE: S-XL

MATERIAL:

SHELL: 100% POLYESTER

LINING: 100% POLYESTER

SPECIFICATION:

- WATERPROOF 10 000 mm H₂O
- BREATHABILITY 10 000 g H₂O/m²
- WATERPROOF ZIPPER
- TAPED SEAMS



TIGER'S EYE

LEONIA W LIGHT JACKET

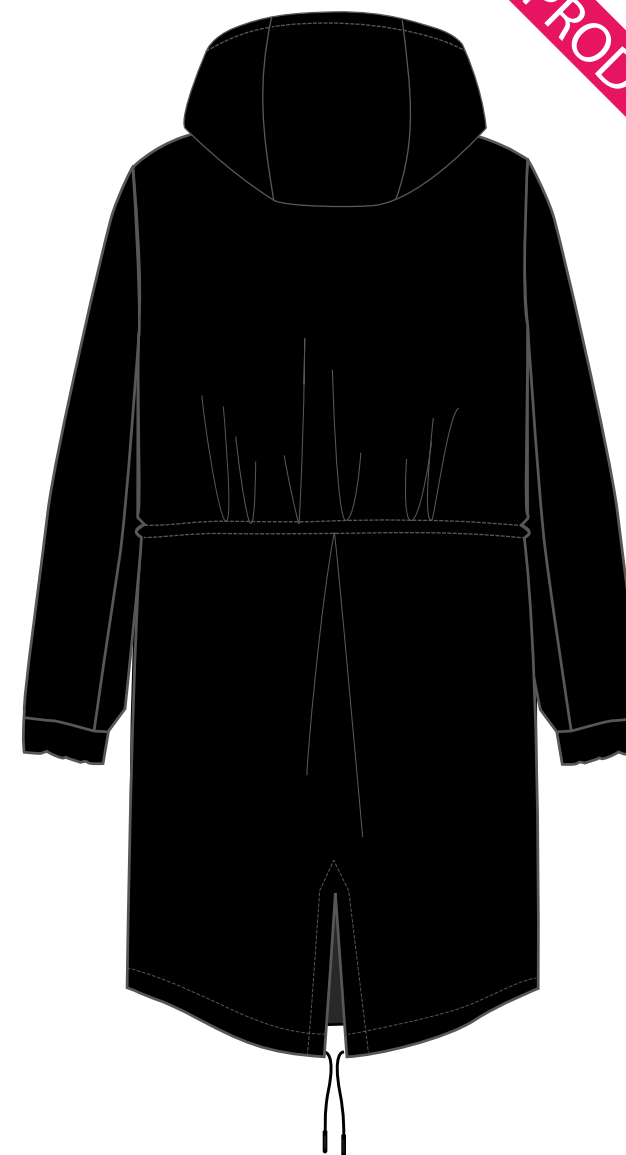
SIZE: XS-XL

MATERIAL COMPOSITION: 100% POLYESTER, 117 g/m²
LINING: 100% POLYESTER, MESH, 95g/m²

SPECIFICATION:

- WATERPROOF: 10 000 mm H₂O
- BREATHABILITY: 5 000 g/H₂O/m²
- WINDPROOF
- 2-LAYER LAMINATION
- TAPED SEAMS
- DWR COATING
- WATERPROOF ZIPPER
- YKK ZIPPER
- DRY POCKET
- ACTIVGUARD PLUS TECHNOLOGY

CERTIFICATES: OEKO-TEX



NEW PRODUCT

BLACK

LARICA W QUILTED COAT

SIZE: XS-XL

MATERIAL COMPOSITION:

SHELL: 100% NYLON

LINING: 100% NYLON

FILLING: 90% DUCK DOWN, 10% FEATHER, 40 g/m²

SPECIFICATION:

- YKK® ZIPPER

- TWO-WAY ZIPPER

- FEATHERS DOWN

CERTIFICATES: OEKO-TEX®



BLACK

MARCHA W QUILTED JACKET

SIZE: XS-XL

MATERIAL COMPOSITION:

SHELL: 100% NYLON

LINING: 100% NYLON

FILLING: 90% DUCK DOWN, 10% FEATHER, 40 g/m²

SPECIFICATION:

- YKK® ZIPPER

CERTIFICATES: OEKO-TEX®



BLACK



WOODROSE

BLANCA W QUILTED JACKET

SIZE: XS-XL

MATERIAL COMPOSITION:

SHELL: 100% NYLON

LINING: 100% NYLON

FILLING: 100% DOWN, 40 g/m²

SPECIFICATION:

- YKK ZIPPER



INFINITY



BLACK

LOANNA W QUILTED VEST

SIZE: XS-XL

MATERIAL COMPOSITION:

SHELL: 100% POLYESTER, 100% NYLON

LINING: 100% NYLON

FILLING: 100% POLYESTER, 100 g/m²

SPECIFICATION:

- YKK® ZIPPER

- REFLECTIVE ELEMENTS



BLACK

SELVA II W BLOUSE

SIZE: S-XL

MATERIAL COMPOSITION:

100 NYLON / 93% POLYESTER, 7% ELASTANE, 220 g/m²

SPECIFICATION:

- YKK ZIPPER
- MICROFLEECE LINED
- THUMB HOLES
- REFLECTIVE ELEMENTS



PORT ROYALE

SCONE W BLOUSE

SIZE: S-XL

MATERIAL COMPOSITION:

100 NYLON / 93% POLYESTER, 7% ELASTANE, 220 g/m²

SPECIFICATION:

- YKK ZIPPER
- MICROFLEECE LINED
- THUMB HOLES
- REFLECTIVE ELEMENTS



WOODROSE

AMANO W OUTDOOR PANTS

SIZE: XS-XL

MATERIAL COMPOSITION:
SHELL: 100% POLYESTER

SPECIFICATION:
- WATERPROOF 8 000 mm H₂O
- BREATHABILITY 1 000 g H₂O/m²
- REFLECTIVE ELEMENTS



BLACK

BENITA W PANTS

SIZE: XS-XL

MATERIAL COMPOSITION: 90% NYLON, 10% ELASTANE

SPECIFICATION:

- YKK ZIPPER
- 4 WAY STRETCH
- REFLECTIVE ELEMENTS

CERTIFICATES: OEKO-TEX



BLACK

NEW PRODUCT

 **IRIM W** OUTDOOR SHORTS

SIZE: XS-XL

MATERIAL COMPOSITION:
SHELL: 65% POLYESTER, 35% COTTON



OLIVE NIGHT

 **HARPER** HOODIE

SIZE: M-XXL

MATERIAL COMPOSITION:
97% COTTON, 3% ELASTANE, 250 g/m2
TERRY



BLACK

 **KALAMA II** SWEATSHIRT

SIZE: S-XXL

MATERIAL COMPOSITION:
67% COTTON, 33% POLYESTER, 270g/m²



AURA ORANGE

 **SOFLIN II** POLO

SIZE: S-2XL

MATERIAL COMPOSITION: 100% ORGANIC COTTON,
210 g/m²



OMPHALODES

NEW PRODUCT

 **TONNY** T-SHIRT

SIZE: S-2XL

MATERIAL COMPOSITION: 100% ORGANIC COTTON, 160 g/m²



EXOTIC ORANGE

NEW PRODUCT

RAMPART II T-SHIRT

SIZE: S-XXL

MATERIAL COMPOSITION:
100% COTTON, 160 g/m²

SPECIFICATION:
- ORGANIC COTTON



BLACK



 **GORDON** T-SHIRT

SIZE: M-XXL

MATERIAL COMPOSITION:
100% COTTON, 160G



GREY MELANGE/BLACK

GORDON II T-SHIRT

SIZE: S-XXL

MATERIAL COMPOSITION:
100% COTTON, 160 g/m²

SPECIFICATION:
- ORGANIC COTTON



YELLOW



 **MAUNU** T-SHIRT

SIZE: S-2XL

MATERIAL COMPOSITION: 93% ORGANIC COTTON, 7% ELASTANE, 175 g/m²



BLACK

NEW PRODUCT

 **ILUMO** PANTS

SIZE: S-XXL

MATERIAL COMPOSITION:
80% COTTON, 15% POLYESTER, 5% ELASTANE,
260g/m²



BLACK

KASHI PANTS

SIZE: S-XXL

MATERIAL COMPOSITION:

44% MODAL, 50% POLYESTER, 6% ELASTANE,
260g/m²



BLACK

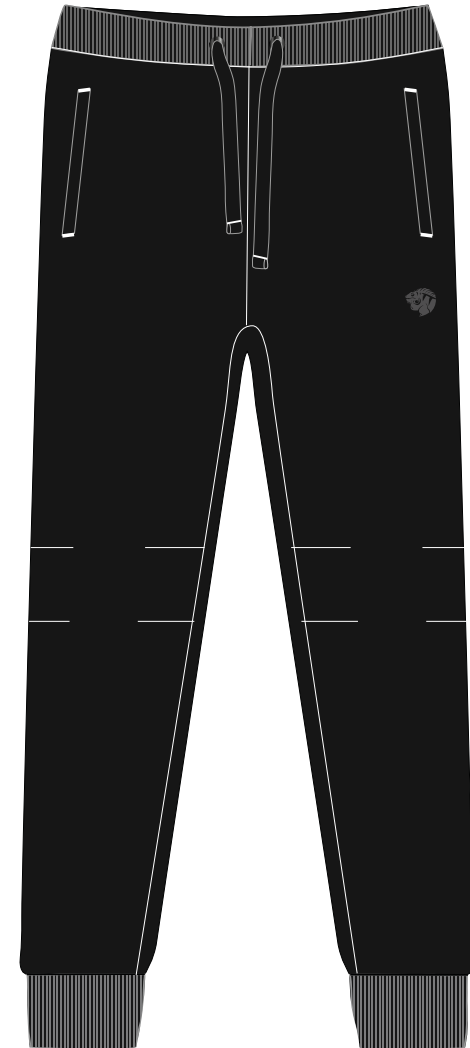
 **LUGIO** SWEATPANTS

SIZE: S-XXL

MATERIAL COMPOSITION:
67% COTTON, 33% POLYESTER, 270g/m²



DARK GREY MELANGE



BLACK

 **HOBAN** SWEATPANTS

SIZE: S-2XL

MATERIAL COMPOSITION:
97% COTTON, 3% ELASTANE, 250 g/m²

NEW PRODUCT

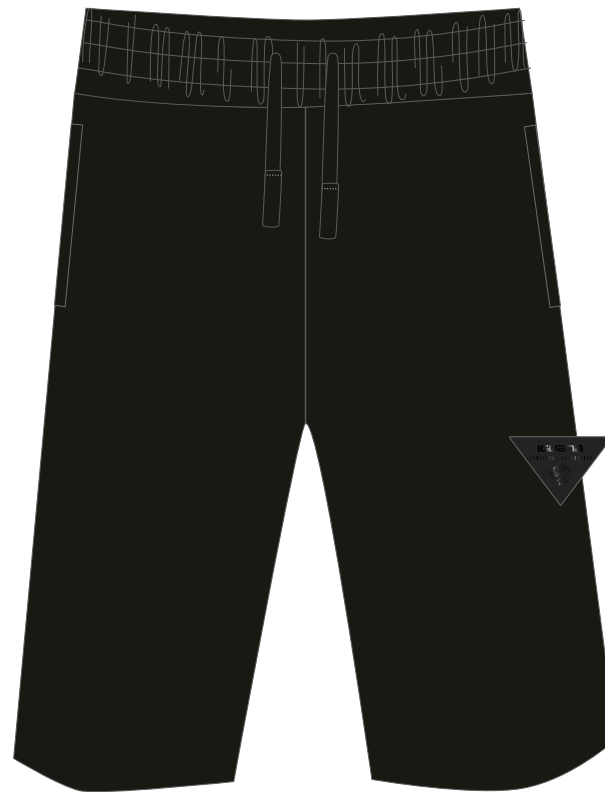


BLACK

 **HIBAN** SHORTS

SIZE: S-2XL

MATERIAL COMPOSITION:
97% COTTON, 3% ELASTANE, 250 g/m²



BLACK

NEW PRODUCT

 **SALAMA W** SWEATSHIRT

SIZE: XS-XL

MATERIAL COMPOSITION:
67% COTTON, 33% POLYESTER, 270g/m²

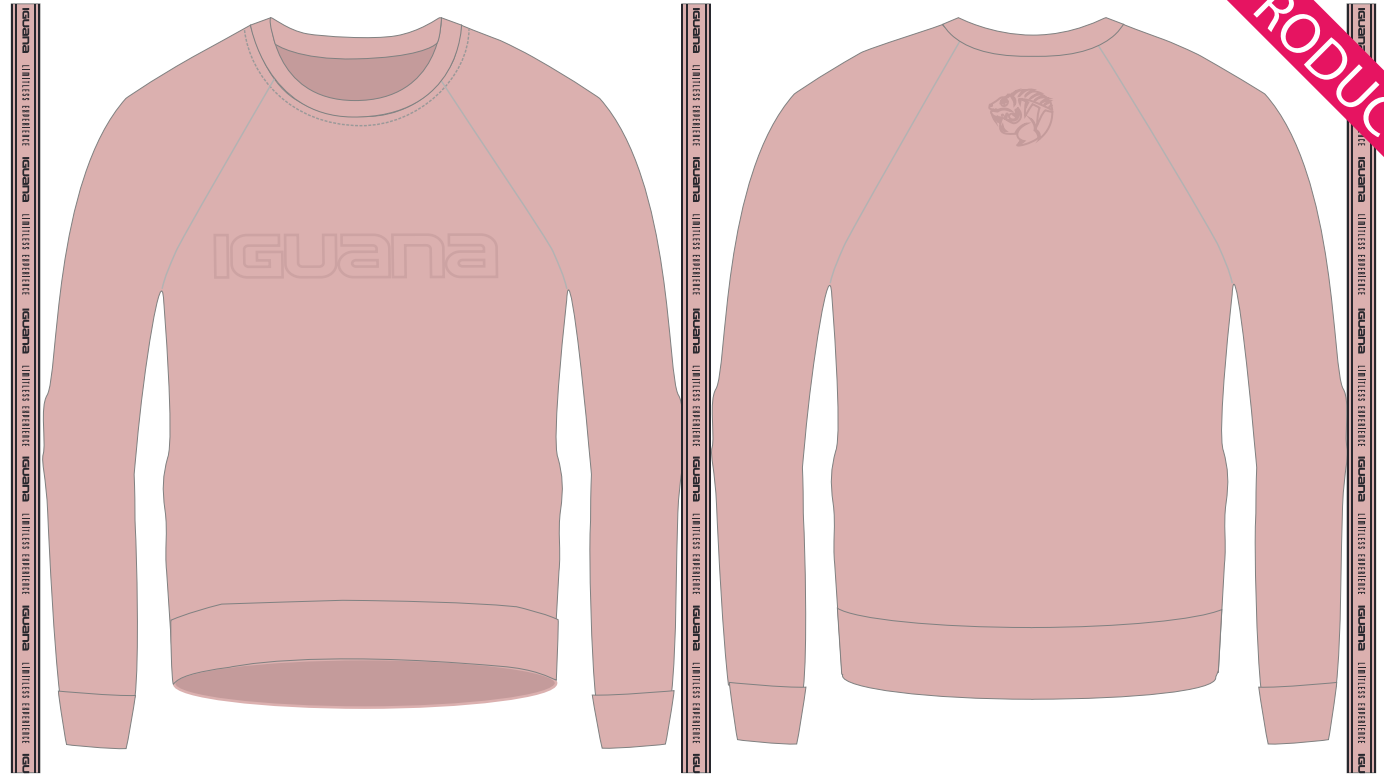


BLACK/SILVER PINK

 **KAURI W** BLOUSE

SIZE: XS-XL

MATERIAL COMPOSITION: 70% POLYESTER,
28% COTTON, 2% ELASTANE, 360 g/m²
MICROFLEECE



SILVER PINK

NEW PRODUCT

 **MAUNU W LS** LONGSLEEVE

SIZE: XS-XL

MATERIAL COMPOSITION:
93% COTTON, 7% ELASTANE, 210g/m2



BLACK/WHITE

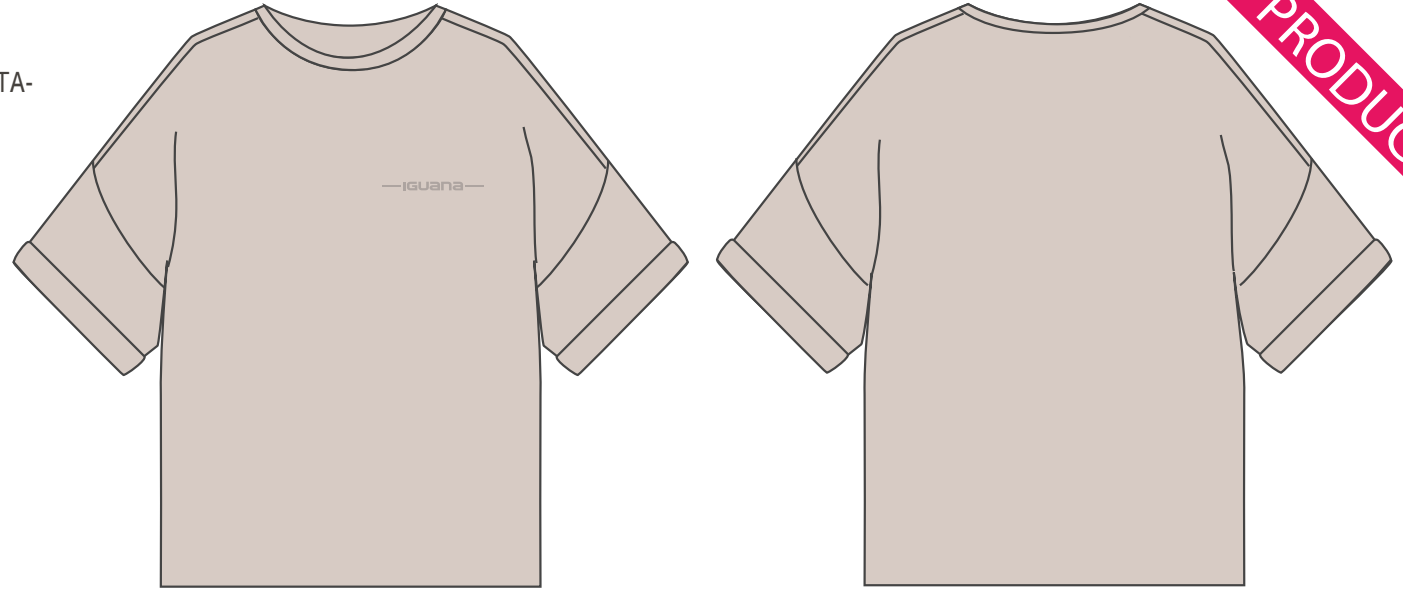
NEW PRODUCT

 **LARITA W** T-SHIRT

SIZE:XS-XL

MATERIAL COMPOSITION: 95% COTTON, 5% ELASTANE, 240 g/m²

NEW PRODUCT



CRYSTAL GRAY



ROSE BROWN

 **SELDI W** T-SHIRT

SIZE:XS-XL

MATERIAL COMPOSITION: 95% ORGANIC COTTON, 5%
ELASTANE, 190 g/m²



BLACK

NEW PRODUCT

SELDOVIA W T-SHIRT

SIZE: XS-XL

MATERIAL COMPOSITION:
95% COTTON, 5% ELASTANE, 190 g/m²

SPECIFICATION:
- ORGANIC COTTON



SILVER PINK



NUKA W T-SHIRT

SIZE: XS-XL

MATERIAL COMPOSITION:
95% COTTON, 5% ELASTANE, 190 g/m²

SPECIFICATION:
- ORGANIC COTTON



SILVER PINK



BIRD'S EGG GREEN

 **LENAJ W** DRESS

SIZE: XS-XL

MATERIAL COMPOSITION: 100% ORGANIC COTTON, 200
g/m²



BLACK

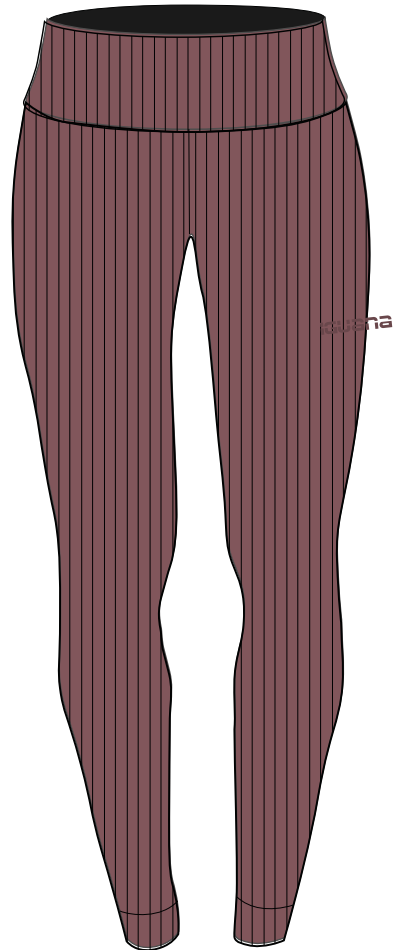
NEW PRODUCT

 **LAUNO W** LEGGINGS

SIZE:XS-XL

MATERIAL COMPOSITION: PENDING

NEW PRODUCT



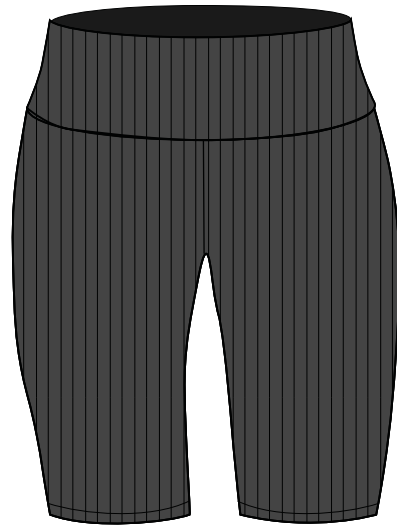
ROSE BROWN

 **LANCA W** LEGGINGS

SIZE: XS-XL

MATERIAL COMPOSITION: PENDING

NEW PRODUCT



MAGNET

 **ONLES W** SWEATPANTS

SIZE: XS-XL

MATERIAL COMPOSITION:
67% COTTON, 33% POLYESTER, 270g/m²



GREY MELANGE/WHITE



BLACK/SILVER PINK



 **HEVER SHORTS W** SHORTS

SIZE: XS-XL

MATERIAL COMPOSITION: 80% COTTON, 20% POLY-
ESTER, 280 g/m²



ROSE BROWN

NEW PRODUCT

 **KOYA** CAP

SIZE: ONE SIZE

MATERIAL COMPOSITION:
50% COTTON, 50% POLYESTER



GREY MELANGE/ANTHRACITE

FEIN CAP

SIZE: ONE SIZE

MATERIAL COMPOSITION:
100% COTTON

NEW PRODUCT



MORROCAN BLUE



BLACK

 **ERDE** CAP

SIZE: ONE SIZE

MATERIAL COMPOSITION:
100% COTTON



BLACK

 **ERDE W** CAP

SIZE: ONE SIZE

MATERIAL COMPOSITION: 100% COTTON

NEW PRODUCT



CRYSTAL GRAY

 **AYLEN W** CAP

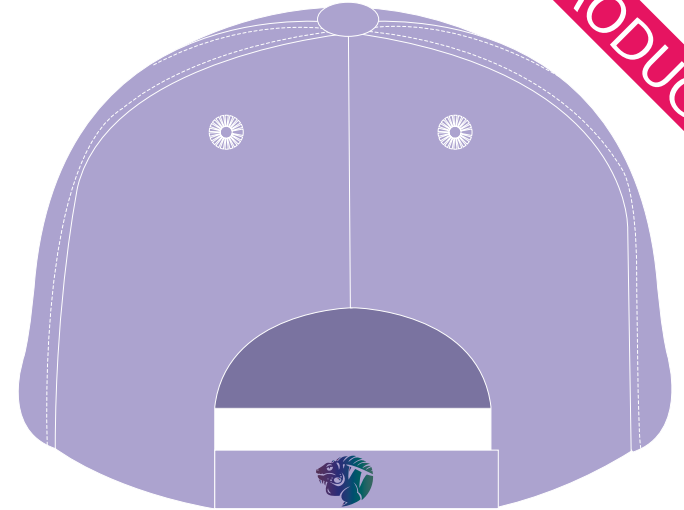
SIZE: ONE SIZE

MATERIAL COMPOSITION: 100% COTTON

NEW PRODUCT



LAVENDER



BLACK

 **JUKUR** CAP

SIZE: ONE SIZE

MATERIAL COMPOSITION:
100% POLYESTER



NOMAD

NEW PRODUCT

 **VILLE** HAT

SIZE: ONE SIZE

MATERIAL COMPOSITION:
100% COTTON



DARK GREY

 **VILLE W** HAT

SIZE: ONE SIZE

MATERIAL COMPOSITION:
100% COTTON

NEW PRODUCT



SILVER PINK

 **VILLE II** HAT

SIZE: ONE SIZE

MATERIAL COMPOSITION:
100% COTTON

NEW PRODUCT



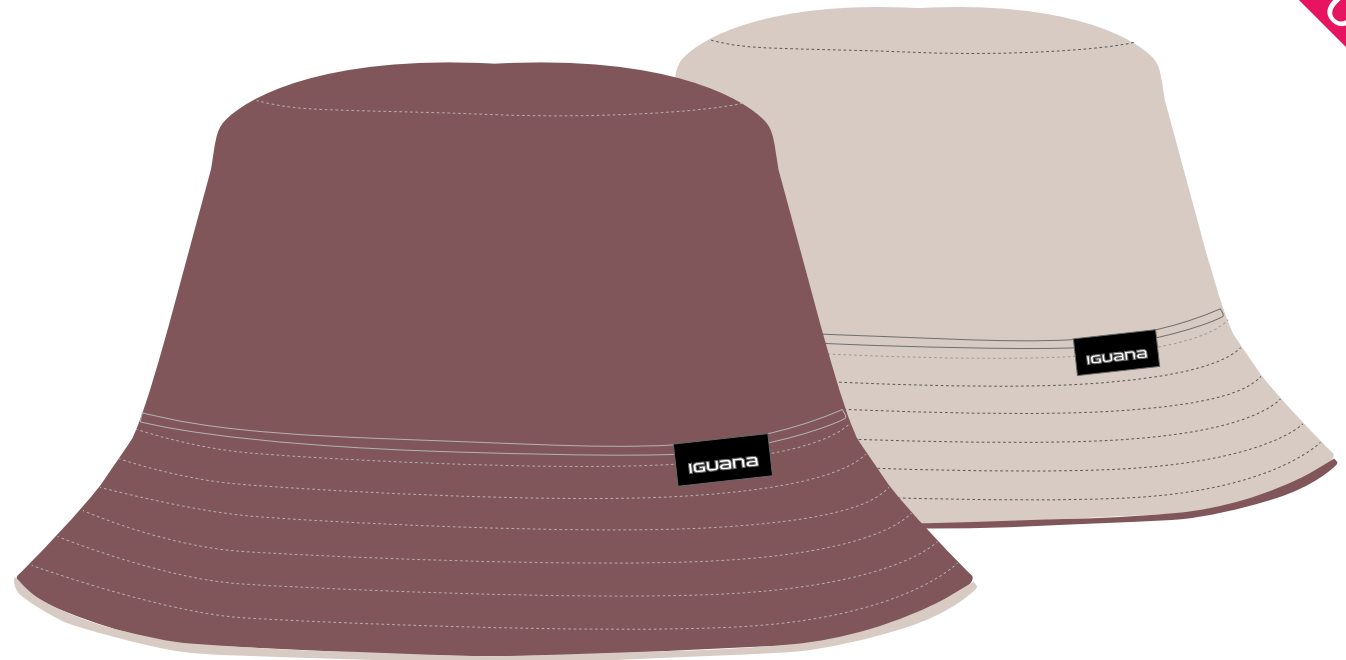
MEDIEVAL BLUE/NOMAD

 **VILLE II W** HAT

SIZE: ONE SIZE

MATERIAL COMPOSITION:
100% COTTON

NEW PRODUCT



ROSE BROWN/CRYSTAL GRAY

FASIN LOW PACK SOCKS

SIZES: 35-38; 39-42; 43-46

MATERIAL COMPOSITION:
75% COTTON, 23% POLYESTER, 2% ELASTANE

ADDITIONAL:
SILVER IONS
3PACK



WHITE/GREY

BLACK/WHITE LOGO

GREY/BLACK

FASIN MID PACK SOCKS

SIZES: 35-38; 39-42; 43-46

MATERIAL COMPOSITION:
75% COTTON, 23% POLYESTER, 2% ELASTANE

ADDITIONAL:
SILVER IONS
3PACK



BLACK/WHITE LOGO



GREY/BLACK



WHITE/GREY

FASIN HIGH PACK SOCKS

SIZES: 35-38; 39-42; 43-46

MATERIAL COMPOSITION:
75% COTTON, 23% POLYESTER, 2% ELASTANE

ADDITIONAL:
SILVER IONS
3PACK



BLACK/WHITE LOGO



GREY/BLACK



WHITE/GREY

LIBIS SOCKS

SIZES: 28-32; 33-35; 35-38; 39-42;

MATERIAL COMPOSITION:
58% COTTON, 24% POLIAMIDE, 12% ELASTANE, 6%
POLYESTER

NEW PRODUCT



WHITE/BLACK



WHITE/BLUE



WHITE/RED



WHITE/POWDER PINK

WILNOR SOCKS

SIZES: 33-35; 35-38; 39-42;

MATERIAL COMPOSITION:

70% COTTON, 25% POLIAMIDE, 3% POLYESTER, 2% ELASTANE

NEW PRODUCT



BLACK/BLOCKS



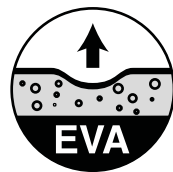
BLACK/PADS

 **FALAR** CASUAL SHOES

SIZE: 41-46

MATERIAL COMPOSITION:
UPPER: PIG NUBUCK + MESH
LINING: MESH
INSOLE: MESH + EVA
OUTSOLE: MD

NEW PRODUCT



MEDIEVAL BLUE/CORONET BLUE

ONAVY CASUAL SHOES

SIZE: 41-46

MATERIAL COMPOSITION:

UPPER: 55% SUEDE, 45% TEXTILE

LINING: MESH

INSOLE: MESH, PU FOAM

OUTSOLE: EVA PHYLON, TPR RUBBER,

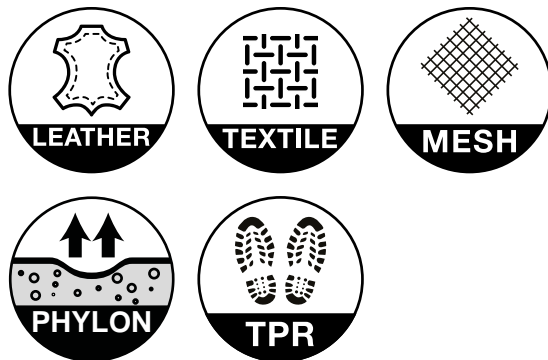
ADDITIONAL:

HI-POLY INSOLE

NEW PRODUCT



MEDIEVAL BLUE/NOMAD



 **OMIS** CASUAL SHOES

SIZE: 41-46

MATERIAL COMPOSITION:

UPPER: LEATHER, MESH

LINING: TEXTILE

INSOLE: MEMORY FOAM

OUTSOLE: EVA FOAM, RB RUBBER, TPU

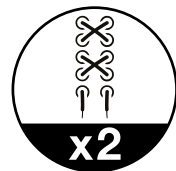
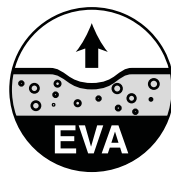
SPECIFICATION:

- MEMORY FOAM

- SPARE SHOELACES



NAVY/BURGUNDY



 **NAIMY** SNEAKERS

SIZE: 41-46

MATERIAL COMPOSITION:
UPPER: PIG NUBUCK + PU + MESH
LINING: MESH
INSOLE: MESH + MEMORY FOAM
OUTSOLE: MD + RB

NEW PRODUCT



BLACK/AURA ORANGE



DECATIS CASUAL SHOES

SIZE: 41-46

MATERIAL COMPOSITION:

UPPER: KNITTING, MESH

LINING: TEXTILE

INSOLE: MESH, PU FOAM

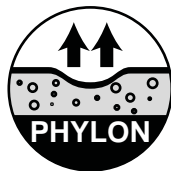
OUTSOLE: EVA PHYLON, TPR RUBBER

SPECIFICATION:

- HI-POLY INSOLE



BLACK/DARK GREY



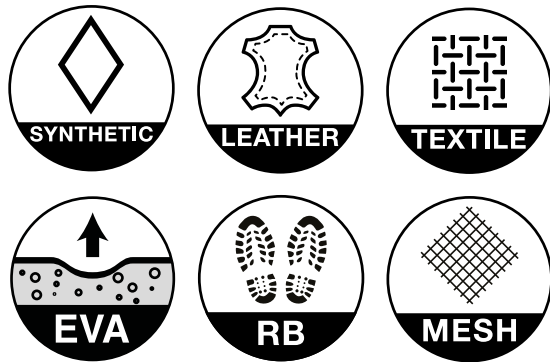
 **OWEN** CASUAL SHOES

SIZE: 41-46

MATERIAL COMPOSITION:
UPPER: PU, SUEDE, JEANS
LINING: MESH
INSOLE: MESH, EVA FOAM
OUTSOLE: RB RUBBER



CAMEL



VILME W CASUAL SHOES

SIZE: 36-41

MATERIAL COMPOSITION:

UPPER: SUEDE

LINING: PIG SKIN

INSOLE: PIG SKIN, EVA FOAM

OUTSOLE: EVA PHYLON, TPR RUBBER

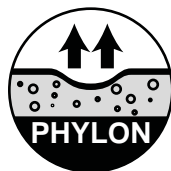
SPECIFICATION:

- WATERPROOF

NEW PRODUCT



SILVER PINK/BEIGE



OMIS W CASUAL SHOES

SIZE: 36-41

MATERIAL COMPOSITION:

UPPER: LEATHER, MESH

LINING: TEXTILE

INSOLE: MEMORY FOAM

OUTSOLE: EVA FOAM, RB RUBBER, TPU

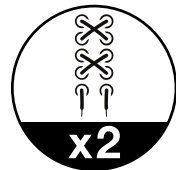
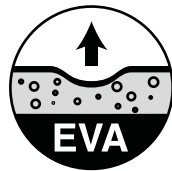
SPECIFICATION:

- MEMORY FOAM

- SPARE SHOELACES



NAVY / DESERT FLOWER



HOLMY W CASUAL SHOES

SIZE: 36-41

MATERIAL COMPOSITION:

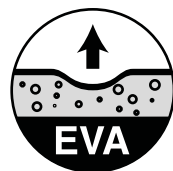
UPPER: HQ PU +TEXTILE

LINING: TEXTILE

INSOLE: FABRIC + EVA

OUTSOLE: PVC

NEW PRODUCT



POWDER PINK/BLUE/LAVENDER



PETISA W CASUAL SHOES

SIZE: 36-41

MATERIAL COMPOSITION:

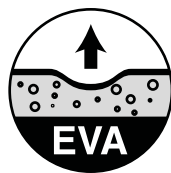
UPPER: MESH + PU

LINING: MESH

INSOLE: MESH + EVA

OUTSOLE: MD + TPR

NEW PRODUCT



EVENING BLUE/RASPBERRY



DECATIS W CASUAL SHOES

SIZE: 36-41

MATERIAL COMPOSITION:

UPPER: KNITTING, MESH

LINING: TEXTILE

INSOLE: MESH, PU FOAM

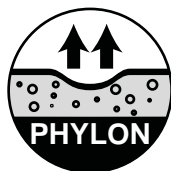
OUTSOLE: EVA PHYLON, TPR RUBBER

SPECIFICATION:

- HI-POLY INSOLE



BLACK



ENGOS TEEN CASUAL SHOES

SIZE: 36-40

MATERIAL COMPOSITION:

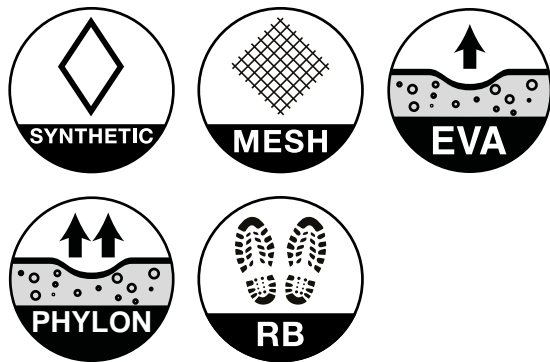
UPPER: PU + MESH

LINING: MESH

INSOLE: MESH, EVA FOAM

OUTSOLE: EVA PHYLON, RB RUBBER

NEW PRODUCT



DARK GREY/BLACK/SAND



 **MALDWIN TEEN** CASUAL SHOES

SIZE: 36-40

MATERIAL COMPOSITION:

UPPER: MESH + PU

LINING: MESH

INSOLE: MESH + EVA

OUTSOLE: MD + PVC

NEW PRODUCT



BLACK/WHITE/ORANGE

 **GRETO TEEN** CASUAL SHOES

SIZE: 36-40

MATERIAL COMPOSITION:

UPPER: CANVAS

LINING: CANVAS

INSOLE: CANVAS

OUTSOLE: RB RUBBER



NAVY



 **MALDWIN JR** CASUAL SHOES

SIZE: 28-35

MATERIAL COMPOSITION:

UPPER: MESH + PU

LINING: MESH

INSOLE: MESH + EVA

OUTSOLE: MD + PVC

NEW PRODUCT



BLACK/GREY/MUSTARD

 **MALDWIN JRG** CASUAL SHOES

SIZE: 30-35

MATERIAL COMPOSITION:

UPPER: MESH + PU

LINING: MESH

INSOLE: MESH + EVA

OUTSOLE: MD + PVC

NEW PRODUCT



BLACK/LAVENDER/SILVER PINK

LUGAN JR CASUAL SHOES

SIZE: 28-35

MATERIAL COMPOSITION:

UPPER: CANVAS, PU

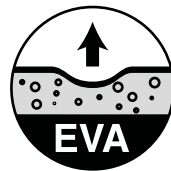
LINING: CANVAS

INSOLE: CANVAS, EVA FOAM

OUTSOLE: RB RUBBER



BLUE/CAMEL



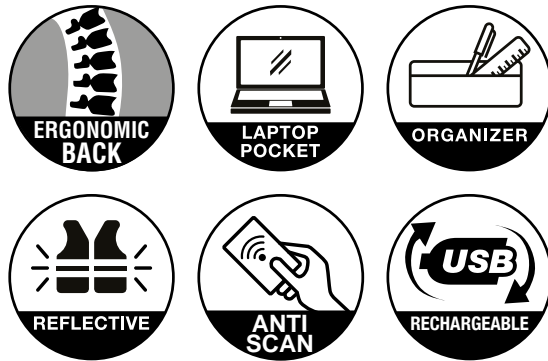
MILOS LAPTOP BACKPACK

CAPACITY: 25 l
SIZE: 48 × 33 × 15 cm
WEIGHT: 0.8 kg

MATERIAL COMPOSITION:
POLYESTER

SPECIFICATION:

- ERGONOMIC BACK
- LAPTOP POCKET
- ORGANIZER
- REFLECTIVE
- ANTI SCAN
- USB PORT & POWERBANK WIRE



DARK GREY MELANGE



LIGHT GREY MELANGE

SHIGERU LAPTOP BACKPACK

CAPACITY: 16 L

SIZE: 25 x 15 x 45 cm

WEIGHT: 0,5 kg

MATERIAL COMPOSITION:
100% POLYESTER

SPECIFICATION:
- LAPTOP POCKET
- ROLL-TOP



LIGHT GREY MELANGE/BLACK

DAEMON LAPTOP BACKPACK

CAPACITY: 30 l
SIZE: 50 × 31 × 20 cm
WEIGHT: 0.8 kg

MATERIAL COMPOSITION:
POLYESTER

- SPECIFICATION:
- ERGONOMIC BACK
 - LAPTOP POCKET
 - ORGANIZER



BLACK/YARROW



COSMIN CITY BACKPACK

CAPACITY: 21 L

SIZE: 43 x 64 x 12 cm

WEIGHT: 0.50 kg

MATERIAL COMPOSITION: 100% POLYESTER

SPECIFICATION:

- CARRYING SYSTEM
- AEROSPHERE BACK
- ROLL-TOP
- ORGANIZER
- LAPTOP POCKET



CARRYING
SYSTEM



AEROSPHERE
BACK



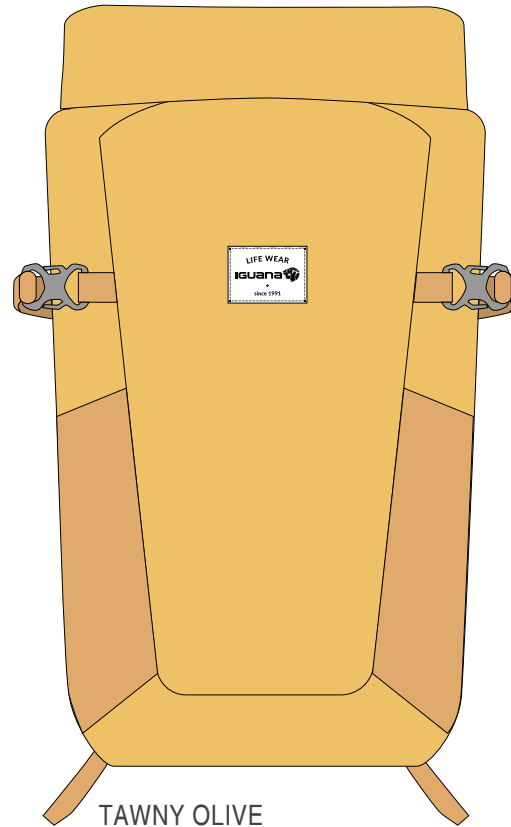
ROLL TOP



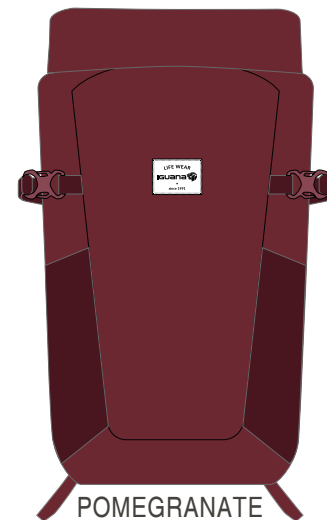
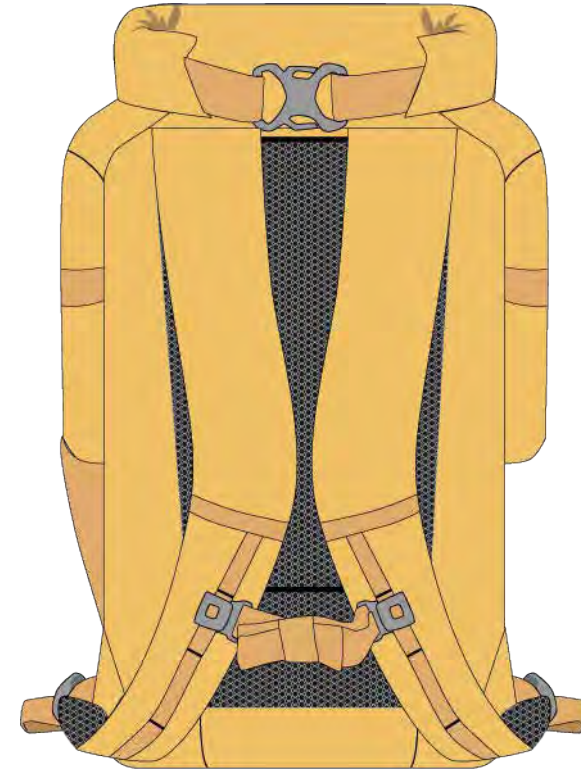
ORGANIZER



LAPTOP
POCKET



TAWNY OLIVE



POMEGRANATE

NEW PRODUCT

LUKES CITY BACKPACK

CAPACITY: 19 L

SIZE: 45 x 27 x 13 cm

WEIGHT: 0.51 kg

MATERIAL COMPOSITION: 100% POLYESTER

SPECIFICATION:

- CARRYING SYSTEM
- AEROSPHERE BACK
- ORGANIZER
- LAPTOP POCKET



CARRYING
SYSTEM



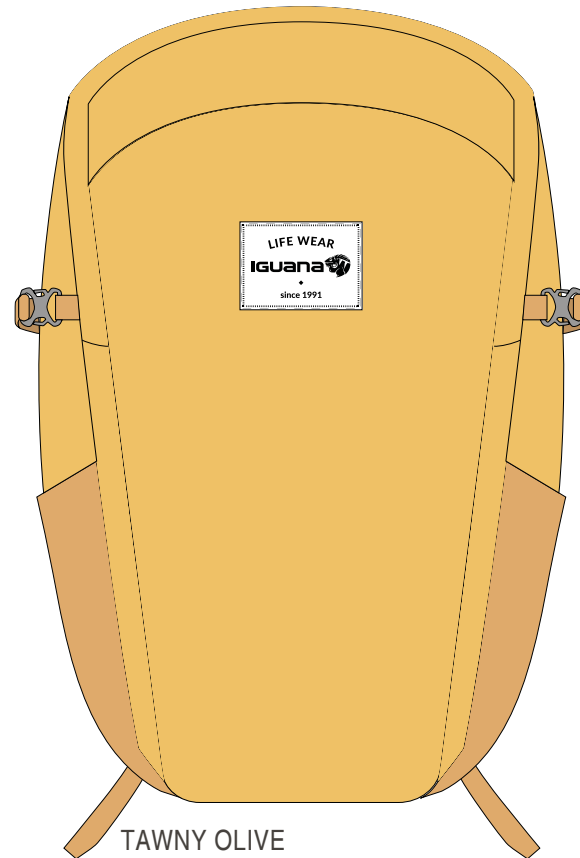
AEROSPHERE
BACK



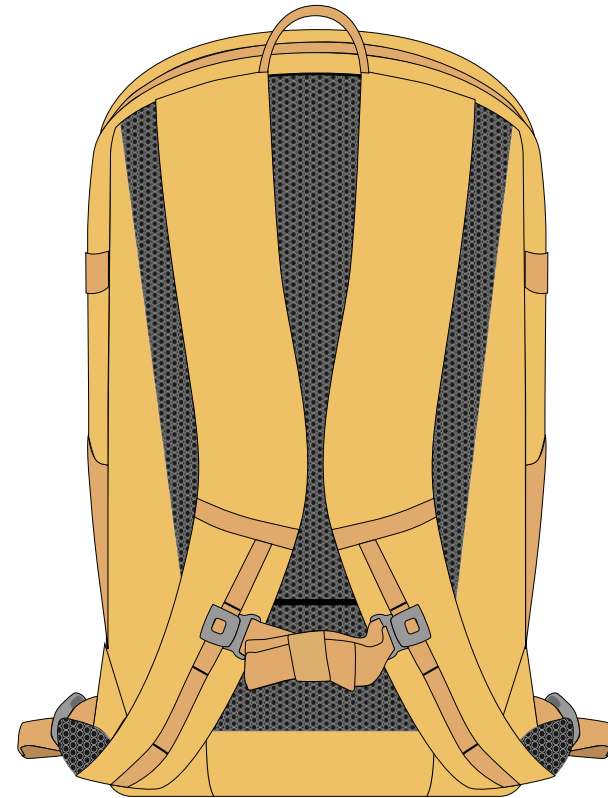
ORGANIZER



LAPTOP
POCKET



TAWNY OLIVE



NEW PRODUCT

ESPIN BAG

CAPACITY: 19 L

SIZE: 40 x 28 x 20 cm

WEIGHT: 0.4 kg

MATERIAL COMPOSITION: 100%
POLYESTER

SPECIFICATION:
- LAPTOP POCKET



POMEGRANATE

NEW PRODUCT

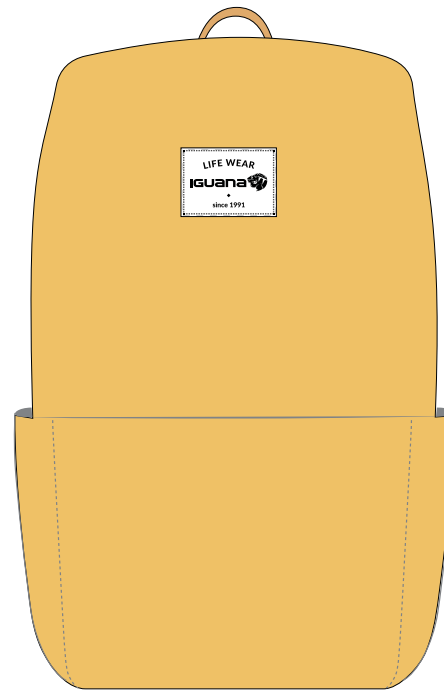
FONSO CITY BACKPACK

CAPACITY: 8.5 L

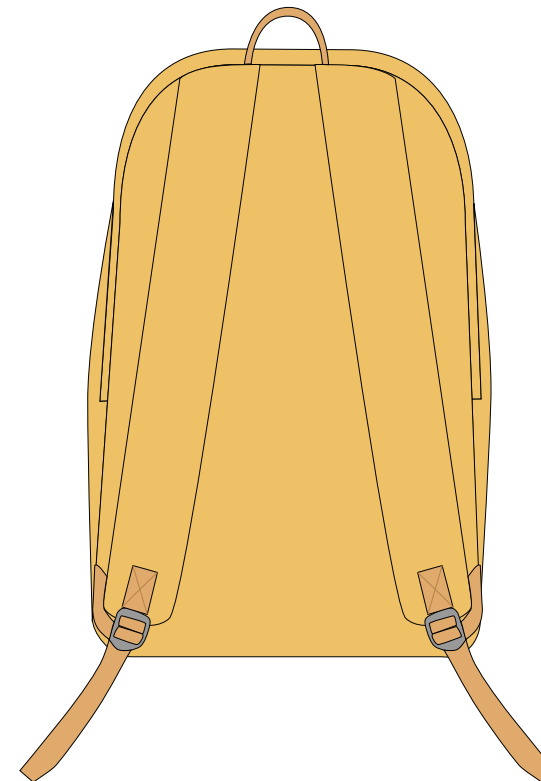
SIZE: 34 x 22 x 12.5 cm

WEIGHT: 0.19 kg

MATERIAL COMPOSITION: 100% POLYESTER



TAWNY OLIVE



NEW PRODUCT

MERIKANO CITY BACKPACK

CAPACITY: 30 l
SIZE: 48 × 31 × 20 cm
WEIGHT: 0.4 kg

MATERIAL COMPOSITION:
POLYESTER

SPECIFICATION:



ANTHRACITE/CHERRY TOMATO

NEW PRODUCT

 **AKIRE** CITY BACKPACK

CAPACITY: 25 l
SIZE: 48 × 30 × 18 cm
WEIGHT: 0.4 kg

MATERIAL COMPOSITION:
POLYESTER

SPECIFICATION:



MEDIEVAL BLUE/AURA ORANGE

NEW PRODUCT

 **AKIRE W** CITY BACKPACK

CAPACITY: 25 l
SIZE: 48 × 30 × 18 cm
WEIGHT: 0.4 kg

MATERIAL COMPOSITION:
POLYESTER

SPECIFICATION:



BLACK/LAAVENDER

NEW PRODUCT

ESSIMO CITY BACKPACK

CAPACITY:

NEW PRODUCT



BLACK



MEDIEVAL BLUE

IGEBELT HIP BAG

CAPACITY: 2 L

SIZE: 37 x 15 x 7 cm

WEIGHT: 0,15 kg

MATERIAL COMPOSITION:
POLYESTER



BLACK

EDGOS HIP BAG

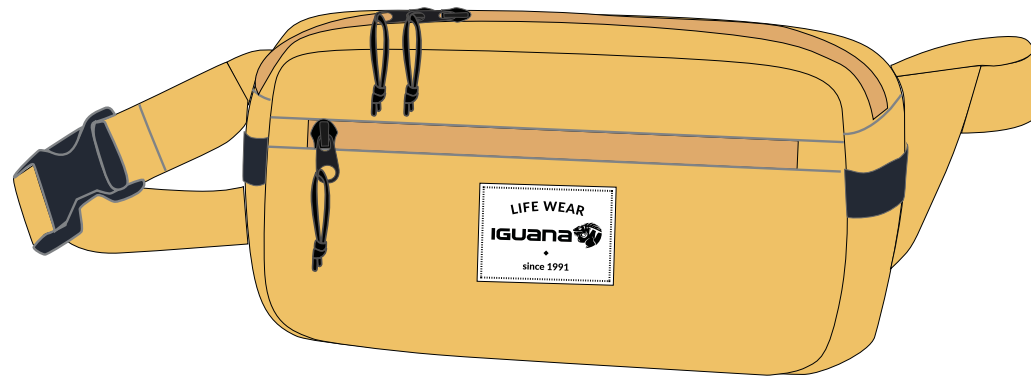
CAPACITY: 3 L

SIZE: 26 x 14,5 x 5 cm

WEIGHT: 0.175 kg

MATERIAL COMPOSITION: 100% POLYESTER

NEW PRODUCT



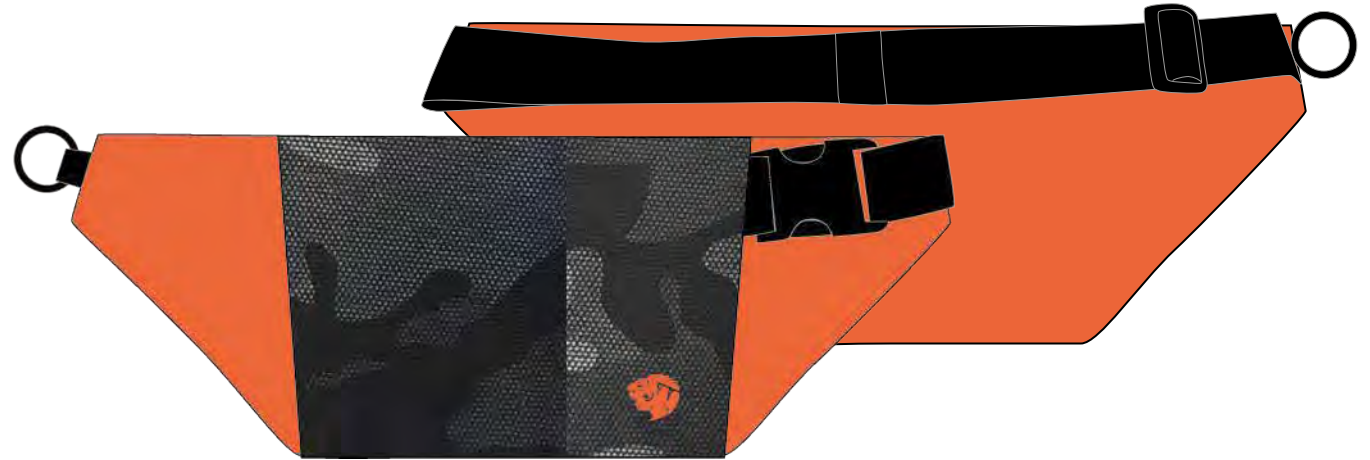
TAWNY OLIVE



 **MODONY** HIP BAG

CAPACITY:

NEW PRODUCT

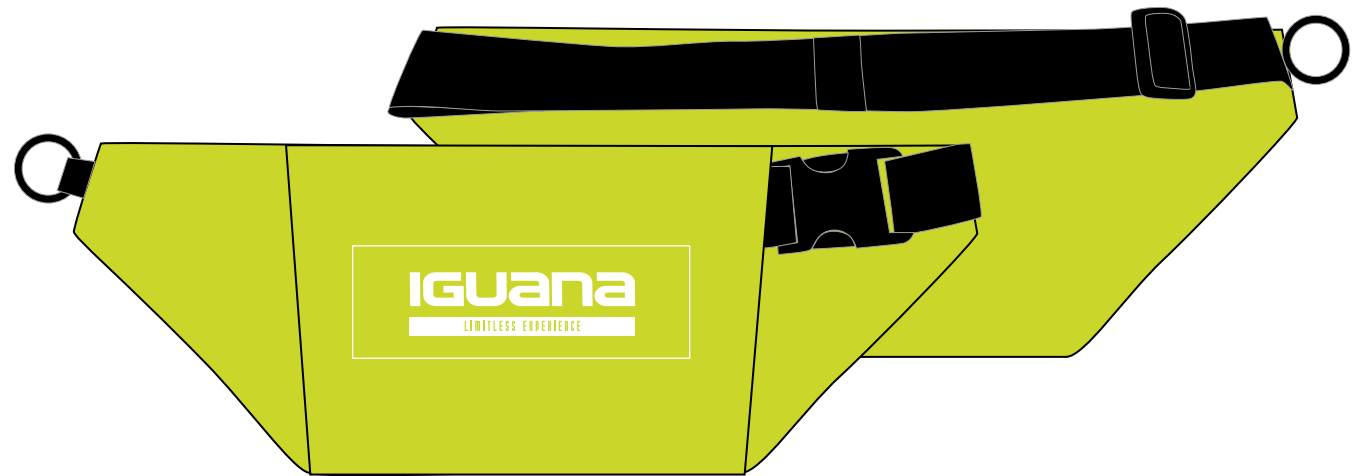


EXOTIC ORANGE/MORO

 **KIKY** HIP BAG

CAPACITY:

NEW PRODUCT



EVENING PRIMROSE

 **EASYBAG** HIP BAG

CAPACITY:

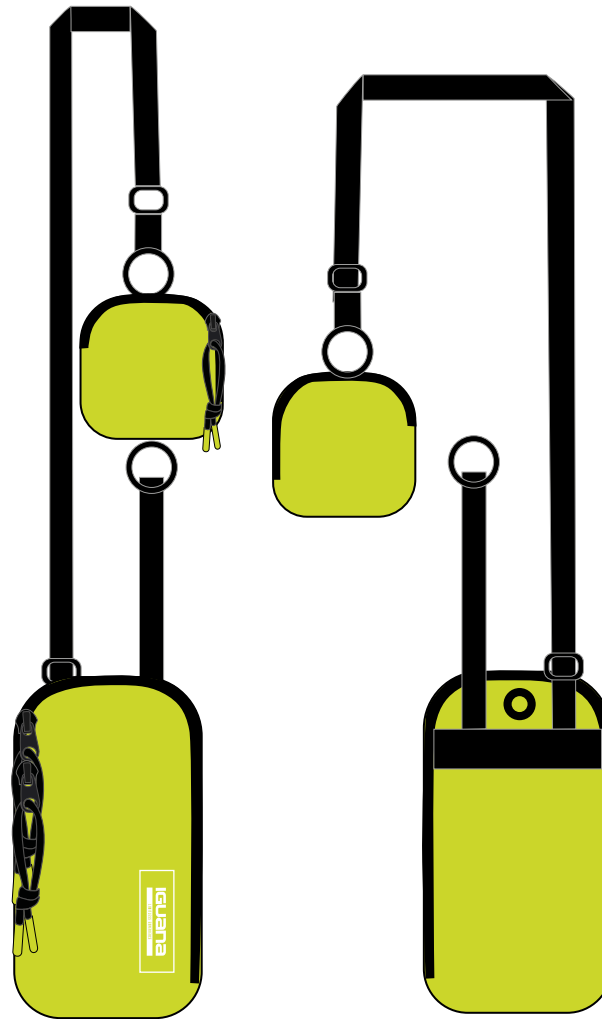


PINK YARROW/EXOTIC ORANGE

NEW PRODUCT

SPEAKEASY HIP BAG

CAPACITY:



EVENING PRIMROSE

NEW PRODUCT

MURCIA SUITCASE

CAPACITY: 36 l, 66 l, 97 l

36 l SIZE: 55 x 39 x 20 cm

66 l SIZE: 66 x 45 x 26 cm

97 l SIZE: 76 x 51 x 30 cm

36 l WEIGHT: 2,5 kg

66 l WEIGHT: 3,2 kg

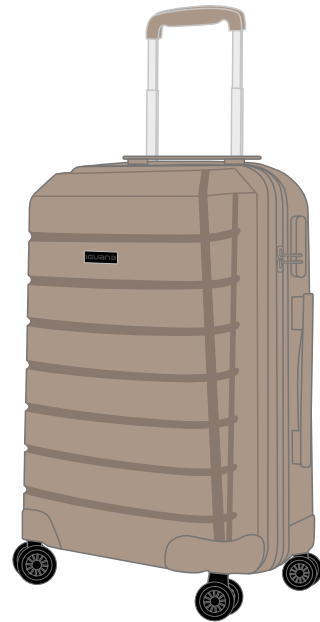
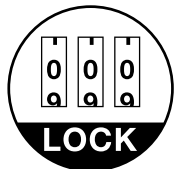
97 l WEIGHT: 3,9 kg

MATERIAL COMPOSITION:

90% ABS + 10% PC

SPECIFICATION:

- PC HARDSHELL
- COMBINATION LOCK
- CABIN BAGGAGE
- 360° WHEELS
- EASY GRIP



CHAMPAGNE 36 l



CHAMPAGNE 66 l



CHAMPAGNE 97 l

MURCIA II SUITCASE

CAPACITY: 36 l, 66 l, 97 l

36 l SIZE: 55 x 39 x 20 cm

66 l SIZE: 66 x 45 x 26 cm

97 l SIZE: 76 x 51 x 30 cm

36 l WEIGHT: 2,5 kg

66 l WEIGHT: 3,2 kg

97 l WEIGHT: 3,9 kg

MATERIAL COMPOSITION:

90% ABS + 10% PC

SPECIFICATION:

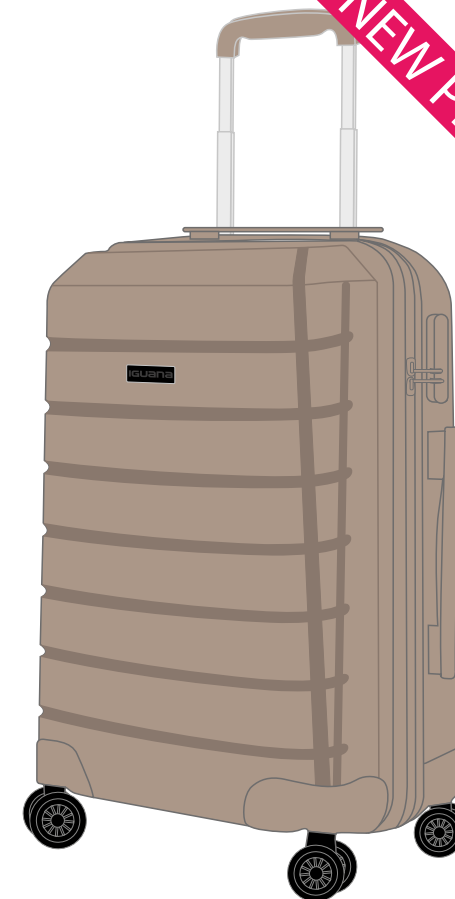
- PC HARDSHELL
- COMBINATION LOCK
- CABIN BAGGAGE
- 360° WHEELS
- EASY GRIP
- TSA LOCK



CHAMPAGNE 36 l



CHAMPAGNE 66 l



CHAMPAGNE 97 l



ORANGE 36 l, 66 l, 97 l

NEW PRODUCT

CANTABRIA SUITCASE

CAPACITY: 35 l, 63 l, 97 l

35 l SIZE: 55 x 37 x 20 cm

63 l SIZE: 65 x 43 x 26 cm

97 l SIZE: 75 x 48 x 30 cm

35 l WEIGHT: 2,7 kg

63 l WEIGHT: 3,2 kg

97 l WEIGHT: 4 kg

MATERIAL COMPOSITION:

- 100% PP

SPECIFICATION:

- PP HARDSHELL
- COMBINATION LOCK
- CABIN BAGGAGE
- 360° WHEELS
- EXTRALIGHT
- EASY GRIP



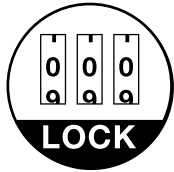
BLACK 35 l



BLACK 63 l



BLACK 97 l



CANTABRIA II SUITCASE

CAPACITY: 35 l, 63 l, 97 l

35 l SIZE: 55 x 37 x 20 cm

63 l SIZE: 65 x 43 x 26 cm

97 l SIZE: 75 x 48 x 30 cm

35 l WEIGHT: 2,7 kg

63 l WEIGHT: 3,2 kg

97 l WEIGHT: 4 kg

MATERIAL COMPOSITION:

- 100% PP

SPECIFICATION:

- PP HARDSHELL
- COMBINATION LOCK
- CABIN BAGGAGE
- 360° WHEELS
- EXTRALIGHT
- EASY GRIP
- TSA LOCK

NEW PRODUCT



BLACK 35 l



BLACK 63 l



BLACK 97 l



LAVENDER 35 l, 63 l, 97 l

NAVARRA SUITCASE

CAPACITY: 40 l, 72 l, 110 l

40 l SIZE: 55 x 35 x 25 cm

72 l SIZE: 68 x 47 x 28 cm

110 l SIZE: 79 x 53 x 32 cm

40 l WEIGHT: 2,7 kg

72 l WEIGHT: 3,6 kg

110 l WEIGHT: 4 kg

MATERIAL COMPOSITION:

- 100% ABS

SPECIFICATION:

- ABS HARDSHELL

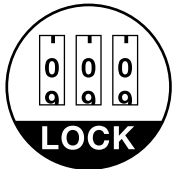
- COMBINATION LOCK

- 360° WHEELS

- EASY GRIP



BIRD'S EGG GREEN/EIFFEL TOWER 40L/ 72L/ 110L



NAVARRA II SUITCASE

CAPACITY: 40 l, 72 l, 110 l

40 l SIZE: 55 x 35 x 25 cm

72 l SIZE: 68 x 47 x 28 cm

110 l SIZE: 79 x 53 x 32 cm

40 l WEIGHT: 2,7 kg

72 l WEIGHT: 3,6 kg

110 l WEIGHT: 4 kg

MATERIAL COMPOSITION:

- 100% ABS

SPECIFICATION:

- ABS HARDSHELL

- COMBINATION LOCK

- 360° WHEELS

- EASY GRIP

- TSA LOCK



BIRD'S EGG GREEN/EIFFEL TOWER 40 l
BIRD'S EGG GREEN/EIFFEL TOWER 72 l
BIRD'S EGG GREEN/EIFFEL TOWER 110 l



NEW PRODUCT

ASTURIA SUITCASE

CAPACITY: 40 l, 72 l, 109 l

40 l SIZE: 55 x 40 x 20 cm

72 l SIZE: 68 x 47 x 25 cm

109 l SIZE: 78 x 54 x 28 cm

40 l WEIGHT: 2,7 kg

72 l WEIGHT: 3,6 kg

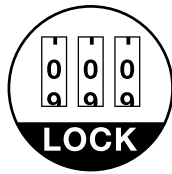
109 l WEIGHT: 4 kg

MATERIAL COMPOSITION:

100% PP

SPECIFICATION:

- PP HARDSHELL
- COMBINATION LOCK
- CABIN BAGGAGE
- 360° WHEELS
- EXTRALIGHT
- EASY GRIP



RED VINE

ASTURIA II SUITCASE

CAPACITY: 40 l, 72 l, 109 l

40 l SIZE: 55 x 40 x 20 cm

72 l SIZE: 68 x 47 x 25 cm

109 l SIZE: 78 x 54 x 28 cm

40 l WEIGHT: 2,7 kg

72 l WEIGHT: 3,6 kg

109 l WEIGHT: 4 kg

MATERIAL COMPOSITION:

100% PP

SPECIFICATION:

- PP HARDSHELL
- COMBINATION LOCK
- CABIN BAGGAGE
- 360° WHEELS
- EXTRALIGHT
- EASY GRIP
- TSA LOCK



RED VINE

NEW PRODUCT

PARIS SUITCASE

CAPACITY: 35 l, 60 l, 90 l

35 | SIZE: 56 x 23 x 38 cm

60 | SIZE: 66 x 28 x 44 cm

90 | SIZE: 76 x 31 x 49 cm

35 | WEIGHT: 2,5 kg

60 | WEIGHT: 3,3 kg

90 | WEIGHT: 4,1 kg

MATERIAL COMPOSITION:

100% PP

SPECIFICATION:

- PP HARD SHELL
- 360° WHEELS
- CABIN BAGGAGE



SEA GREEN 35 l

SEA GREEN 60 l

SEA GREEN 90 l

SYDNEY SUITCASE

CAPACITY: 35 l, 60 l, 90 l

35 l SIZE: 56 x 23 x 39 cm

60 l SIZE: 66 x 28 x 44 cm

90 l SIZE: 76 x 31 x 50 cm

35 l WEIGHT: 2,8 kg

60 l WEIGHT: 3,4 kg

90 l WEIGHT: 4,5 kg

MATERIAL COMPOSITION:

- PC

SPECIFICATION:

- HARD SHELL

- 360° WHEELS

- CABIN BAGGAGE



NAVY 35 l



NAVY 60 l



NAVY 90 l

NERRI PILLOW AIR HEADREST

SIZE: ONE SIZE

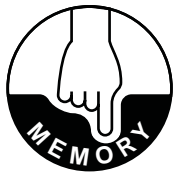
MATERIAL COMPOSITION:

SHELL: 100% POLYESTER

FILLING: 100% PU

SPECIFICATION:

- MEMORY FOAM
- REMOVABLE COVER



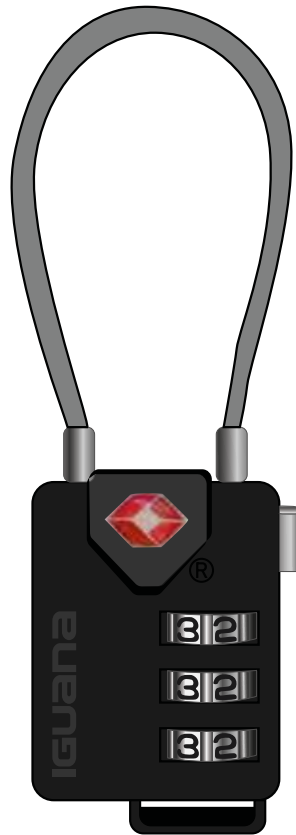
PARISIAN NIGHT/ANTHRACITE

DIGIT LOCK LOCK

SIZE: ONE SIZE

MATERIAL COMPOSITION:
100% ZINC ALLOY

SPECIFICATION:
- TSA LOCK



BLACK

RALE SET TRAVEL SET

SIZE: 10,5 x 6,5 cm (TAG), 180 cm
(STRAP), ONE SIZE (LOCK)

MATERIAL COMPOSITION:

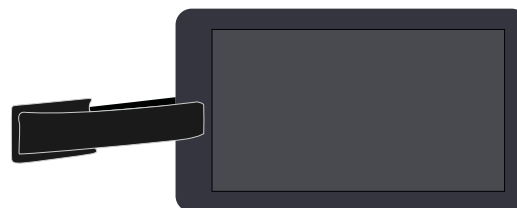
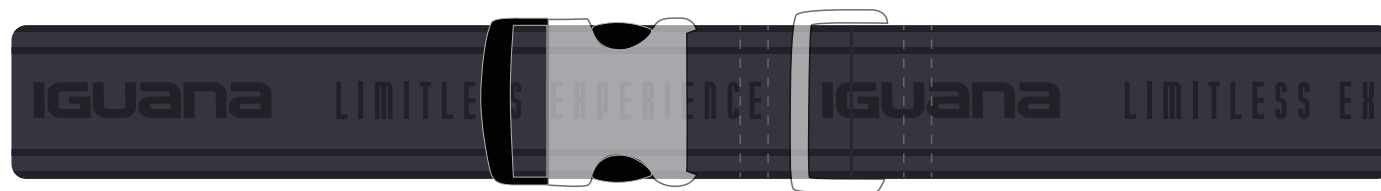
TAG: PVC, ABS

STRAP: 100% PP

LOCK: 100% ZINC ALLOY

SPECIFICATION:

- ADJUSTABLE LENGTH
- TSA LOCK



PARISIAN NIGHT/ANTHRACITE

CAPACITY:



BLACK 28"

BLACK 24"

BLACK 20"

NEW PRODUCT

TRAFFIC SUNGLASSES

SIZE: ADULT

MATERIAL COMPOSITION:

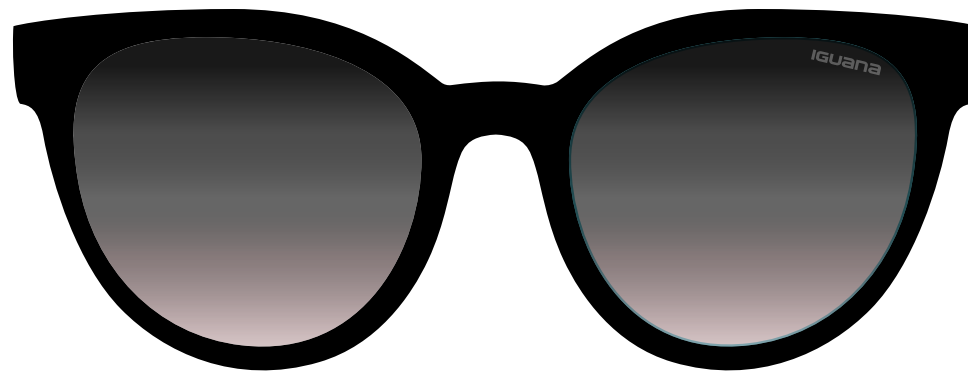
FRAME: PC

LENS: PC

SPECIFICATIONS:

- UV400
- 3 UV FILTER
- POLYCARBONATE

NEW PRODUCT



SHINY BLACK/MILKY WOODROSE

MANU SUNGLASSES

SIZE: ADULT

MATERIAL COMPOSITION:

FRAME: PC

LENS: PC

SPECIFICATIONS:

- UV400

- 3 UV FILTER

- POLYCARBONATE



MATT BLACK

NEW PRODUCT

URBAN CITY BOTTLE

CAPACITY: 260 ML

MATERIAL COMPOSITION:
BODY: STAINLESS STEEL
LID: STAINLESS STEEL, PP

SPECIFICATION:
- VACUUM INSULATION
- STAINLESS STEEL
- ANTI-LEAK
- BPA FREE



BLACK

NEW PRODUCT



GREEN

MULTI PROTECTOR 200 ML PROTECTION AGAINST DIRT

CAPACITY: 150 ml

SPECIFICATION:

- WIDE RANGE OF APPLICATION



AQUA STOP HONEY 250 ML PROTECTION AGAINST DIRT

CAPACITY: 250 ml

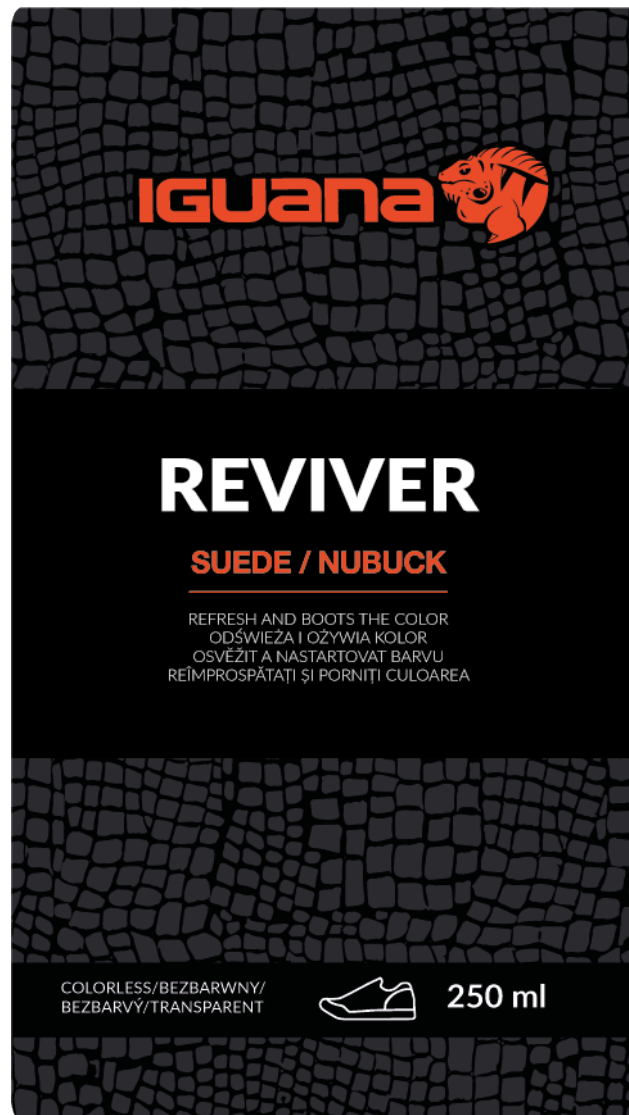
SPECIFICATION:



REVIVER NUBUCK SUEDE 250 ML PROTECTION AGAINST DIRT

CAPACITY: 250 ml

SPECIFICATION:



SHAMPOO 75 ML SHAMPOO FOR SHOES

CAPACITY: 75 ml



SOLE CLEANER 125 ML CLEANS WHITE SOLES

CAPACITY: 125 ml



IGUANA

SOLE CLEANER

FOR SNEAKERS

IMPREGNATION: CLEANS WHITE SOLES
IMPREGNAT: CZYŚCI BIAŁE PODESZWY
IMPREGNAZCE: ČISTÁ BÍLÁ PODRÁŽKA
IMPREGNANT: CURĂȚĂ, ÎNGRIJEȘTE ȘI REDĂ CULOAREA ALBĂ ÎNITALĂ TALPILOR ADIDAȘILOR DE TIP SNEAKERS.
IMPREGNÁLÓ ANYAG: TISZTÍTJA, ÁPOLJA ÉS VISSZAADJA A SNEAKERS SPORTCIPO TALPÁNAK EREDETI FEHÉR SZÍNÉT.

COLORLESS/BEZBARWNY/
BEZBARVY/BEZFAREBNY/
TRANSPARENT/SZINTELEN

 125 ml



WHITENER 75 ML CONCEALER FOR WHITE SHOES

CAPACITY: 75 ml



DEO SILVER ACTIVE 150 ML DEODORANT FOR SHOES

CAPACITY: 150 ml



DEO SILVER ACTIVE FRESH 150 ML DEODORANT FOR SHOES

CAPACITY: 150 ml



✕ BRUSH NUBUCK SUEDE D

