



CATALOGUE 2023



ACTIVE APPAREL

COMPRESSION Clothing made of very elastic material squeezes muscles causing better oxygenation and blood circulation, thereby reducing exercise pain.

WINDPROOF Windproof material protects against cold, providing comfort during training.

IQ DRY TECH Technology used in the clothes of the IQ brand. Owing to it, the material breathes and perfectly wicks away moisture. Provides optimum thermal conditions during training and a feeling of freshness.

AIRWAY Used synthetic materials ensure free air flow, which provides the user with a feeling of comfort while practicing various physical activities.

QUICKDRY Synthetic materials are characterised by a short drying time, which ensures comfort during and after exercise.

SEAMLESS Seamless clothing provides a very good moisture transport, while ensuring dryness and maintaining thermal comfort regardless of the level of activity.

VISIBLE AFTER DARK Reflective elements increase safety during active leisure.

REFLECTIVE ELEMENTS Reflective elements increase safety during active leisure.

BUILT-IN-BRA The built-in bra increases comfort during physical exertion.

MOLDED CUPS Moulded cups sewn permanently into women's wear ensure the comfort of use. They do not move and ensure good moisture discharging.

REMOVABLE MOLDED CUPS Removable moulded cups in the women's wear improve comfort and allow for adjusting it to the different needs of the female users.



ADJUSTABLE STRAPS Adjustable bra straps allow for individual matching, ensuring perfect support of the bust.



THUMB HOLES Extended sleeves with thumb holes protect hands against cold.



AUDIO POCKET Comfortable pocket for an mp3 player, phone, documents, and other small items.



BACK POCKET Applied in the clothing is used for hiding the necessary items.



INNER POCKET Leggings built-in waist pocket, useful and comfortable during training.



AUDIO POCKET Comfortable pocket for an mp3 player, phone, documents, and other small items.



BUILT-IN BRIEFS Built-in linen pants increase the comfort of use during training. They provide excellent moisture discharge, dry quickly, do not cause allergies, and are resistance to bacteria and fungi.



BUILT-IN SHORTS Comfortable and skin-tight leggings in the shorts increase the comfort of use. They eliminate the formation of abrasions during training, dry quickly, and discharge moisture.



MICROFLEECE LINED Microfleece lining increases the thermal comfort of the clothing.



APPAREL ACCESSORIES

AIRWAY Used synthetic materials ensure free air flow, which provides the user with a feeling of comfort while practicing various physical activities.

QUICKDRY Synthetic materials are characterised by a short drying time, which ensures comfort during and after exercise.

WINDPROOF The material that ensures windproofness.

MICROFLEECE LINED Microfleece lining increases the thermal comfort of the clothing.

VISIBLE AFTER DARK Reflective elements increase safety during active leisure.

REFLECTIVE ELEMENTS Reflective elements increase safety during active leisure.

SEAMLESS No seams or their minimization in the clothing provides comfort and convenience of use and eliminates the possibility of abrasions during physical activity.

TOUCHSCREEN-FRIENDLY Gloves allow you to operate touch screens.

COMPRESSION Socks made of very elastic material squeezes muscles causing better oxygenation and blood circulation, thereby reducing exercise pain.

DRYTEX COMFORT Drytex Comfort is a high quality, soft texture technical fabric. This technology ensures high breathable features so Drytex Comfort is a special fabric that removes moisture and keeps your body fresh.



SHOES

WATERPROOF Wellies protect 100% against water.

SYNTHETIC MATERIAL Shoes made of a synthetic material (PVC, PU, TPU, rubber) are easy to maintain, offer a large range of colours and designs.

KNITTING Shoes made of knitted textile perfectly fitting to your feet. They are lightweight and breathable.

TEXTILE This fabric is based on a network of natural and artificial fibers - footwear utilising it proves to be lighter and more breathable.

MESH Synthetic mesh provides excellent breathability of the footwear. Owing to this, the footwear is lighter and quickly discharges moisture to the outside of the upper.

RB RUBBER Sole made of RB rubber is slip resistant, flexible, and waterproof. It perfectly insulates the foot from the ground, which significantly increases thermal comfort on cold days.

TPR RUBBER Thermoplastic rubber is characterised by high strength and resistance to high temperatures. The sole made of this material is durable and wear resistant.

EVA PHYLON Thanks to innovative manufacturing technology, EVA Phylon foam is extremely light, flexible and has excellent cushioning properties.

EVA FOAM EVA foam adapts perfectly to the foot. It is lightweight and flexible, thereby providing excellent cushioning while maintaining a small weight.

HI-POLY Breathable, lightweight and antibacterial foam. Perfect shock-resistance and comfort.



REMOVABLE INSOLE The possibility of removing the insole.



REFLECTIVE ELEMENTS Reflective elements increase safety during active leisure.

SHOES ACCESSORIES

INTELLIGENT INSOLE Memory foam applied in the insole of the sports shoes adapts to the foot shape, ensuring comfort and support.



EVA FOAM EVA foam adapts perfectly to the foot. It is lightweight and flexible, thereby providing excellent cushioning while maintaining a small weight.



ELASTIC Thanks to the combination of polyester and rubber fibers, laces are flexible, stretchable and adapt to the foot without causing pressure or discomfort.

SPORT ACCESSORIES

THERMOS / WATER BOOTLE ETC.



ANTI-LEAK Locking system that prevents fluid leakage.



ATOMISER A device for emitting water as a fine spray.



BPA FREE Product doesn't contain Bisphenol-A.



FITNESS ACCESSORIES

ADJUSTABLE LENGTH The possibility of length adjustment.



SHOCK-ABSORBING PADS Shock-absorbing pads of the cycling gloves applied at the points of the largest loads and pressure, are intended to mitigate the shocks while riding, thereby protecting the wrists against injuries.



PULL OFF SYSTEM PULL OFF SYSTEM for easy gloves removal.



STABILIZING STRAPS The elastic stabilizing straps give the perfect fit and wrist support during training.



LEATHER Leather gloves offer high durability, greater air circulation and better grip.



WATERPROOF The inside of the material is covered with a thin laminate that prevents water penetration.

BAGGAGE

BACKPACK / BAG ETC.



SHOE COMPARTMENT Compartment for shoes.



VENTILATION Ventilation in the form of openings or mesh ensures good air flow and maintaining freshness.



WATERPROOF ZIPPER Zippers covered with additional laminate provide better protection of against soaking.



REFLECTIVE ELEMENTS Reflective elements increase safety during active leisure.



SHOCK-ABSORBING INJECTED FOAM Injected foam padding for shock absorption



SHOCK-ABSORBING FOAM Foam that protects against impacts.



STABILIZING STRAPS The strap with velcro guarantees stability of the wrists.



LOCKED THUMB A locked thumb minimizes the risk of injury.

COMBAT SPORTS ACCESSORIES

FITNESS LINE

RUNNING LINE

ACTIVE LINE

COMBAT SPORTS LINE

FOOTWEAR LINE



SILVE



DYORO



OSKO



SEMIO



DELI



DAREN

19-1763 TCX
RACING RED



ERIOD II AW (OCIEPLANE)

19-4007 tcx
anthracite

19-1763 TCX
RACING RED



HIERRO

19-3901 tcx
magnet



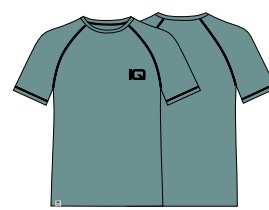
AW22

SILVE



CORNA

13-0550 tcx
lime punch



DYORO

16-4712 tcx
mineral blue



ATHOS

19-4122 tcx
moonlit ocean



DELI
AW22



OLPU

19-4122 tcx
moonlit ocean



SURIO



ss22
ONRE



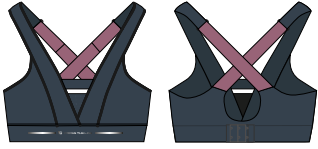
17-1612 tcx
mellow mauve

19-4110 tcx
midnight navy

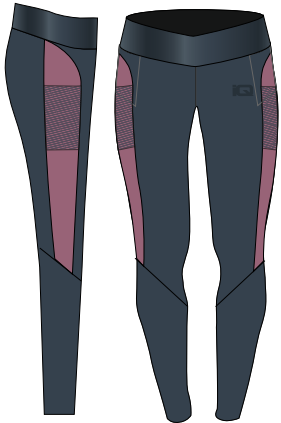
MALIA WMNS



CARIA WMNS

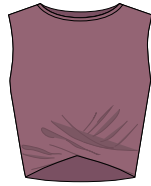


PLAYA WMNS



ss22

KARI WMNS



KEIRA WMNS

ss22



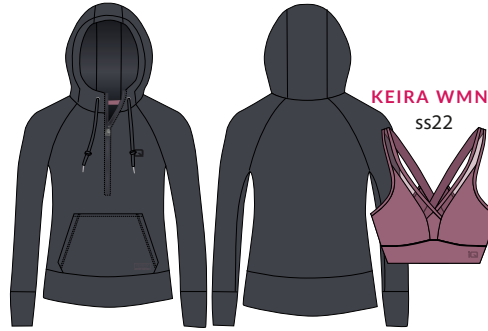
DELIA WMNS



19-4104tcx
EBONY

17-1612 tcx
mellow mauve

NAYO WMNS



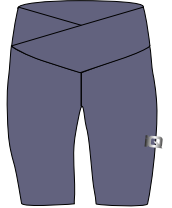
KEIRA WMNS

ss22

SENJA WMNS



NEGRA 1/2 WMNS



18-3817 tcx
heron

19-4007 tcx
anthracite

ONAYE WMNS



19-4104tcx
EBONY

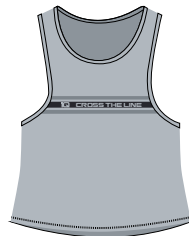
17-1612 tcx
mellow mauve

19-4104tcx
EBONY

MAYRA WMNS



MAYRA WMNS



ROYDO WMNS



TAIGA WMNS

ss22
SENJA WMNS



15-1607 tcx
pale mauve

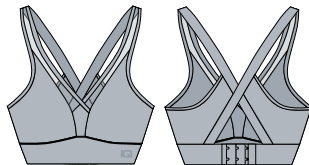


CLARA WMNS

ss22

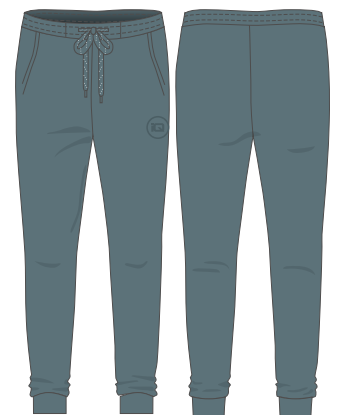


KEIRA WMNS



14-4206 tcx
pearl blue

LIVIA WMNS



18-4011 tcx
goblin blue

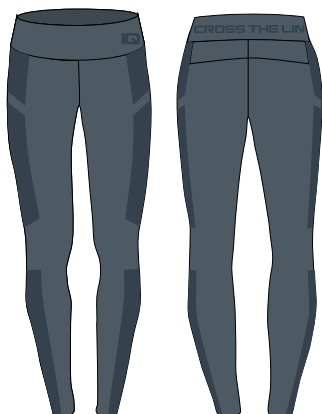
DELIA WMNS



18-4214 tcx
stormy weather

19-4007 tcx
anthracite

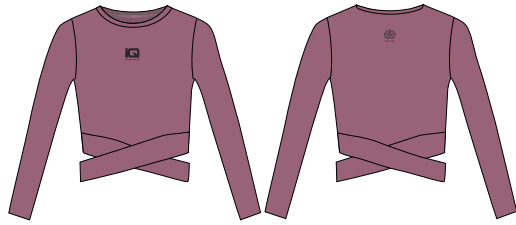
AYMA II WMNS



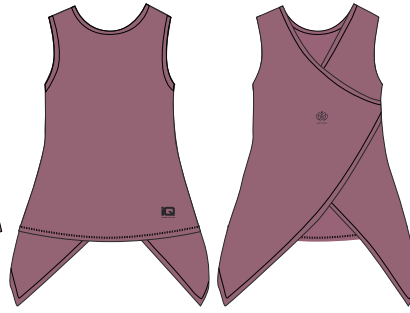
18-4214 tcx
stormy weather

19-4110 tcx
midnight navy

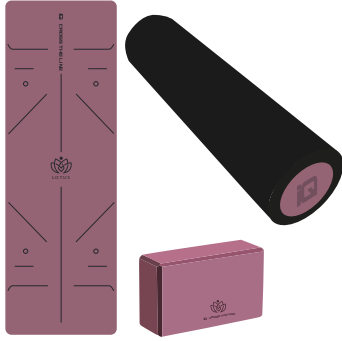
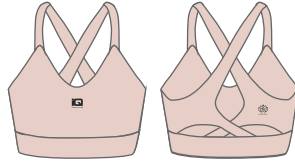
YOGINI WMNS



STRETCHI WMNS



YOGIA WMNS



LEMINI WMNS




 LINIA CIAŻOWA SS23 kapsuła

ARIANA WMNS



 19-4110 tcx
midnight navy

 19-2520 tcx
potent purple

LAIKA WMNS



IZARIA WMNS



PATIO WMNS



CAROLA WMNS



MACARA WMNS

BELISSA WMNS



ACARIA WMNS





ERINO



ESTI



ASLAN



ESTI LS



VIER



VIER II



RONSE



19-3964 tcx
monaco blue
22-4-13

ETES



ESTI II
ss22



PORIO



ss22
CRUZI



VIER II



19-4104 tcx
ebony

19-3927 tcx
graphite

18-1664 tcx
fiery red



ASLANA WMNS



HIDA WMNS



RAMIDA WMNS



AW22 IMMO WMNS

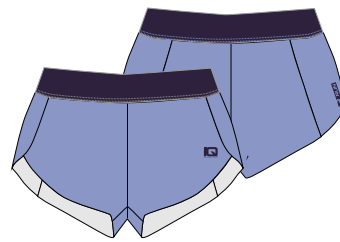


ADIHA III WMNS



19-3712 tcx
nightshade
19-2-3

NAIMA WMNS



17-3929 TCX
PALE IRIS
S.02-5-10

AW22 VERI WMNS



19-4914 tcx
deep teal
27-3-9

17-2230 tcx
carmine rose
15-1-5

PRAIA WMNS



17-2230 tcx
carmine rose
15-1-5

19-3712 tcx
nightshade
19-2-3

PRAIA WMNS

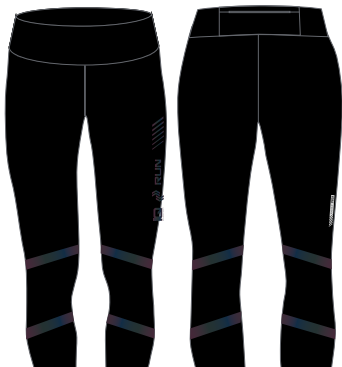


14-0340 tcx
acid lime
S.03-5-1

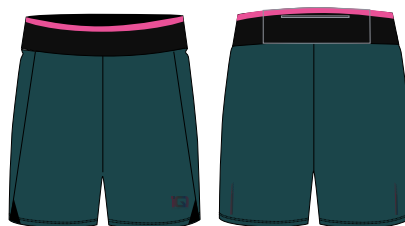
RAMIDA WMNS



NUKIA 3/4 WMNS



RIANA WMNS



19-4914 tcx
deep teal
27-3-9

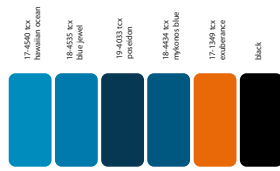
17-2230 tcx
carmine rose
15-1-5

SS22 LUNA WMNS



19-4914 tcx
deep teal

14-0340 tcx
acid lime



RUNNO



TRAILO



AILO 1/2



NOWOŚĆ

TREILO



ERIO



RIMMO



TRAIINO



RUNNO WMNS



TRAILO WMNS

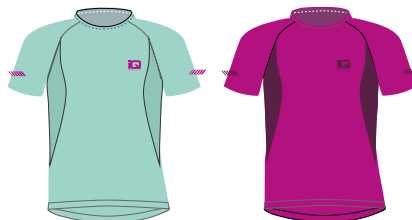


ERIO WMNS



NOWOŚĆ

TREILO WMNS



RAILA WMNS



RIMMO WMNS



TRAIINO WMNS

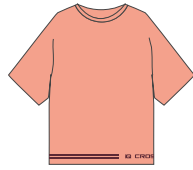




CLOVI III JRG



DAFI JRG



DAFI JRG



CLAI JRG



KELLY JRG



KELLY JRG



MIKSI II JRG





SIMBA II JRG SIMBA JRG






YAY 1/2 JRG



-  19-3911 txc black beauty
-  16-1511 txc rose tan
-  19-1522 txc zinfandel

-  15-1433 txc papaya punch
-  19-1522 txc zinfandel

-  15-1433 txc papaya punch
-  19-1522 txc zinfandel
-  16-1511 txc rose tan



ARILA II JRG



-  19-3911 txc black beauty
-  16-1511 txc rose tan

SAIMA JRG



-  17-2230 txc carmine rose
-  19-1522 txc zinfandel



NIFFI II JRB



COLO II JRB



COCON JRB



COLO JRB



MELAR II JRB



RENO JRB



RENO JRB



-  black
-  19-1763 txc racing red

SILVE TRAINING SWEATSHIRT

SIZE: S-XXL

MATERIAL COMPOSITION: 50% COTTON,
45% POLYESTER, 5% LYCRA,
280 g/m² TERRY

PREMIUM
COLLECTION

- SPECIFICATION:
- LYCRA
 - REFLECTIVE ELEMENTS



IVY GREEN/BLACK



MOONLIT OCEAN/BLACK



 **VESIL** TRAINING SWEATSHIRT

SIZE: S-XXL

MATERIAL COMPOSITION:
70,3% COTTON, 29,7% POLYESTER, 290 g

PREMIUM
COLLECTION



BLACK

SARIN TRAINING SWEATSHIRT

SIZE: S-XXL

MATERIAL COMPOSITION:
56% COTTON 44% POLYESTER, 280 g/m² FLEECE

- SPECIFICATION:
- MICROFLEECE LINED
 - REFLECTIVE ELEMENS



BLACK MELANGE/BLACK/SPICY ORANGE

MILKY LS TRAINING BLOUSE

SIZE: S-XXL

MATERIAL COMPOSITION:
88% POLYESTER, 12% ELASTANE

SPECIFICATION:
- AIRWAY
- QUICKDRY



BLACK

 **SEMIO** TRAINING T-SHIRT

SIZE: S-XXL

MATERIAL COMPOSITION:
92% POLYESTER, 8% ELASTANE

PREMIUM
COLLECTION



MALLARD GREEN

DYORO TRAINING T-SHIRT

SIZE: S-XXL

MATERIAL COMPOSITION:
92% POLYESTER, 8% ELASTANE

NEW PRODUCT



DEEP LAGOON/BLACK



BLACK/LIME PUNCH



MINERAL BLUE/BLACK



ILANGE TRAINING T-SHIRT

SIZE: S-XXL

MATERIAL COMPOSITION:
88% POLYESTER, 12% ELASTANE

- SPECIFICATION:
- AIRWAY
 - QUICKDRY
 - IQ DRY TECH
 - REFLECTIVE ELEMENTS



EBONY



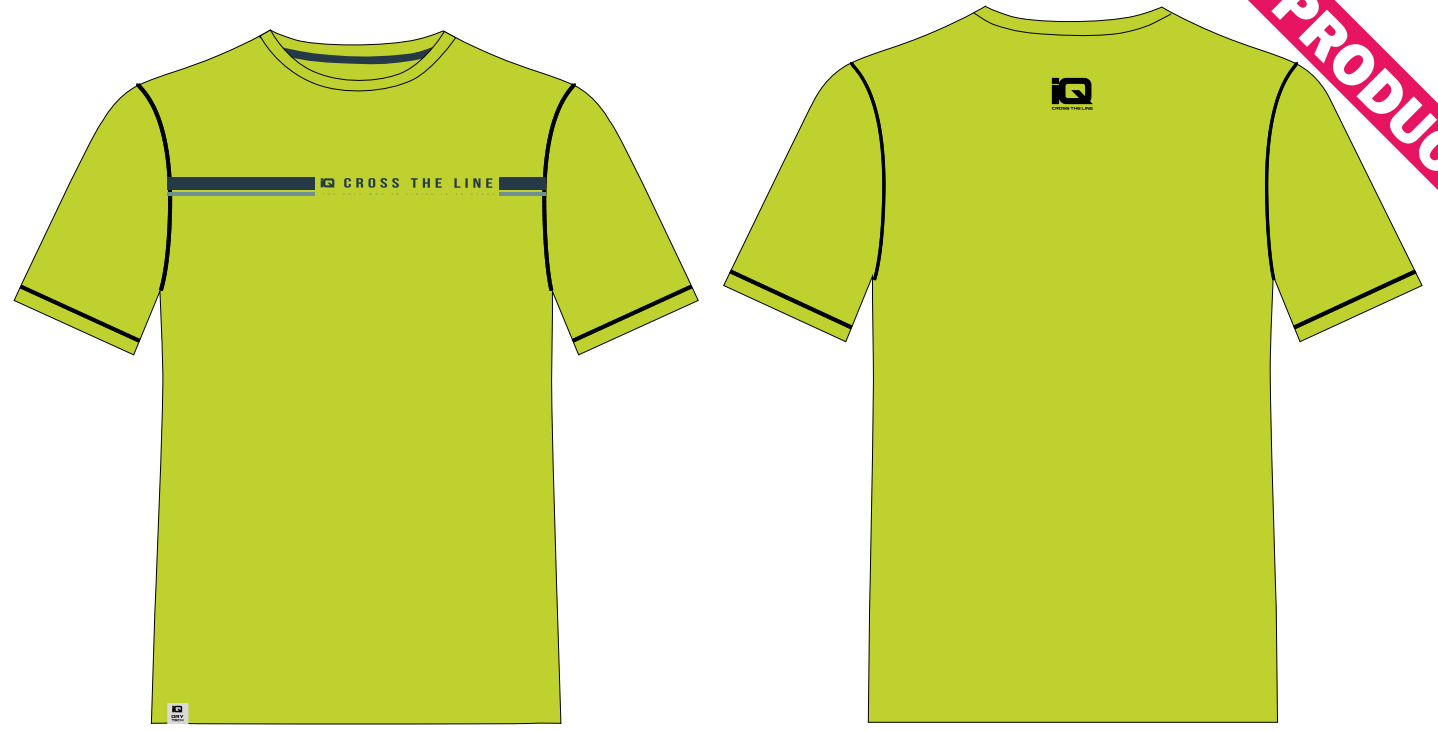
 **CORNA** TRAINING T-SHIRT

SIZE: S-XXL

MATERIAL COMPOSITION:
92% POLYESTER, 8% ELASTANE

FITNESS LINE

NEW PRODUCT



LIME PUNCH



IGLAK TRAINING T-SHIRT

SIZE: S-XXL

MATERIAL COMPOSITION:
92% POLYESTER, 8% ELASTANE

- SPECIFICATION:
- AIRWAY
 - QUICKDRY
 - DRY TECH
 - REFLECTIVE ELEMENTS



DARK GREY MELANGE



 **MILKY** TRAINING BLOUSE

SIZE: S-XXL

MATERIAL COMPOSITION:
88% POLYESTER, 12% ELASTANE

SPECIFICATION:
- AIRWAY
- QUICKDRY



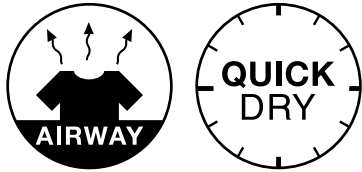
BLACK

 **MILY** TRAINING TANK TOP

SIZE: S-XXL

MATERIAL COMPOSITION:
88% POLYESTER, 12% ELASTANE

SPECIFICATION:
- AIRWAY
- QUICKDRY



BLACK

DELI TRAINING SWEATPANTS

SIZE: S-XL

MATERIAL COMPOSITION: 50% COTTON,
45% POLYESTER, 5% LYCRA, 280 g/m² TERRY

PREMIUM
COLLECTION

SPECIFICATION:
- LYCRA



IVY GREEN



MOONLIT OCEAN



SURIO TRAINING SWEATPANTS

SIZE: S-XXL

MATERIAL COMPOSITION:
92% NYLON, 8% ELASTANE

- SPECIFICATION:
- AIRWAY
 - QUICKDRY
 - DRY TECH

PREMIUM
COLLECTION



MAGNET



ERIOD II TRAINING SWEATPANTS

SIZE: S-XL

MATERIAL COMPOSITION: 92% POLYESTER,
8% ELASTANE

PREMIUM
COLLECTION

- SPECIFICATION:
- BREATHABILITY
 - AIRWAY
 - QUICKDRY
 - REFLECTIVE ELEMENTS
 - MICROFLEECE LINED

BREATH
ABILITY

AIRWAY

QUICK
DRY

REFLECTIVE

MICRO
FLEECE
LINED



DEEP LAGOON

VESILLES TRAINING SWEATPANTS

SIZE: S-XXL

MATERIAL COMPOSITION:
70,3% COTTON, 29,7% POLYESTER, 290 g

SPECIFICATION:
- REFLECTIVE ELEMENTS



BLACK

RISME TRAINING SWEATPANTS

SIZE: S-XXL

MATERIAL COMPOSITION:
92% POLYESTER, 8% ELASTANE

SPECIFICATION:
-AIRWAY
-QUICKDRY



ANTHRACITE



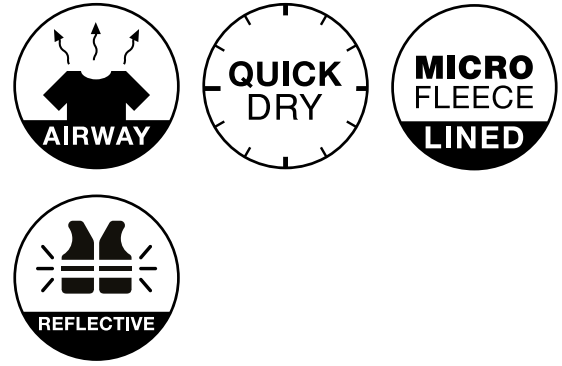
MOONLIT OCEAN/BLACK

ERIOD TRAINING SWEATPANTS

SIZE: S-XXL

MATERIAL COMPOSITION:
92% POLYESTER 8% ELASTANE

- SPECIFICATION:
- AIRWAY
 - QUICKDRY
 - MICROFLEECE LINED
 - REFLECTIVE ELEMENTS



BLACK

RISAN TRAINING SWEATPANTS

SIZE: S-XXL

MATERIAL COMPOSITION:
56% COTTON 44% POLYESTER, 280 g/m² FLEECE

- SPECIFICATION:
- MICROFLEECE LINED
 - REFLECTIVE ELEMENTS



BLACK MELANGE/BLACK/SPICY ORANGE

NEW PRODUCT

HIERRO TRAINING SHORTS

SIZE: S-XXL

MATERIAL COMPOSITION:
92% POLYESTER, 8% ELASTANE

PREMIUM
COLLECTION

SPECIFICATION:

- AIRWAY
- QUICKDRY
- DRY TECH



MALLARD GREEN



MAGNET



NEW PRODUCT

ONRE TRAINING SHORTS

SIZE: S-XXL

MATERIAL COMPOSITION:
94% POLYESTER, 6% ELASTANE

- SPECIFICATION:
- ULTRALIGHT
 - AIRWAY
 - QUICKDRY



MOONLIT OCEAN



BLACK



NEW PRODUCT

OLPU TRAINING SHORTS

SIZE: S-XXL

MATERIAL COMPOSITION:
92% POLYESTER, 8% ELASTANE

- SPECIFICATION:
- AIRWAY
 - QUICKDRY
 - BUILT-IN BRIEFS



BLACK



MOONLIT OCEAN



PORT ROYALE

DAREN TRAINING SHORTS

SIZE: S-XXL

MATERIAL COMPOSITION:
100% POLYESTER

- SPECIFICATION:
- ULTRALIGHT
 - AIRWAY
 - QUICKDRY
 - REFLECTIVE ELEMENTS



BLACK/LIME PUNCH



TAIGA WMNS TRAINING HOODIE

SIZE: XS-XL

MATERIAL COMPOSITION:

92% POLIESTER,
8% ELASTANE, 240 g/m²

SPECIFICATION:

- AIRWAY
- QUICKDRY
- IQ DRY TECH



LIGHT GREY MELANGE



ARISA WMNS TRAINING SWEATSHIRT

SIZE: XS-XL

MATERIAL COMPOSITION:
87% POLYESTER 13% ELASTANE, 290 g/m² FLEECE

SPECIFICATION:
- MICROFLEECE LINED



GRAY MELANGE/BLACK

NAYO WMNS TRAINING HOODIE

SIZE: XS-XL

MATERIAL COMPOSITION:
92% POLYESTER, 8% ELASTANE

SPECIFICATION:
-AIRWAY
-QUICKDRY



SFA TURTLE



 **BOYNA WMNS** TRAINING BLOUSE

SIZE: XS-XL

MATERIAL COMPOSITION: 75% POLYESTER,
25% ELASTANE



POTENT PURPLE

NEW PRODUCT

MILKY WMNS LS TRAINING BLOUSE

SIZE: XS-XL
MATERIAL COMPOSITION: 88% POLYESTER,
12% ELASTANE, 200 g/m²

- SPECIFICATION:
- AIRWAY
 - QUICKDRY



GOBLIN BLUE



MELLOW MAUVE



MIDNIGHT NAVY



BLACK



SENJA WMNS TRAINING T-SHIRT

SIZE: XS-XL

MATERIAL COMPOSITION:
75% NYLON, 25% LYCRA

PREMIUM
COLLECTION

- SPECIFICATION:
- AIRWAY
 - QUICKDRY
 - IQ DRY TECH
 - REFLECTIVE ELEMENTS
 - LYCRA





PALE MAUVE

ARUNA WMNS TRAINING T-SHIRT

SIZE: XS-XL

MATERIAL COMPOSITION:
88% POLYESTER 12% ELASTANE

- SPECIFICATION:
- ULTRALIGHT
 - AIRWAY
 - QUICKDRY
 - IQ DRY TECH



WHITE

ROYDO WMNS TRAINING T-SHIRT

SIZE: XS-XL

MATERIAL COMPOSITION:
90% POLYESTER, 10% ELASTANE

NEW PRODUCT



PEARL BLUE



MALE WMNS TRAINING T-SHIRT

SIZE: XS-XL

MATERIAL COMPOSITION:
92% POLYESTER, 8% ELASTANE

PREMIUM
COLLECTION

NEW PRODUCT



ANTHRACITE

YORYO WMNS TRAINING T-SHIRT

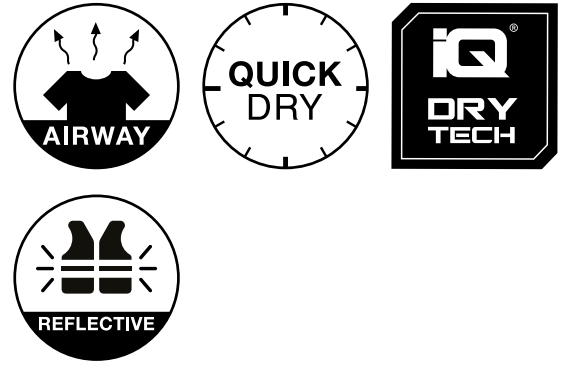
SIZE: XS-XL

MATERIAL COMPOSITION:
92% POLIESTER, 8% ELASTANE, 160 g/m²

- SPECIFICATION:
- AIRWAY
 - QUICKDRY
 - IQ DRY TECH
 - REFLECTIVE ELEMENTS



HERON



AIRWAY

QUICK DRY

IQ DRY TECH

REFLECTIVE



MELLOW MAUVE

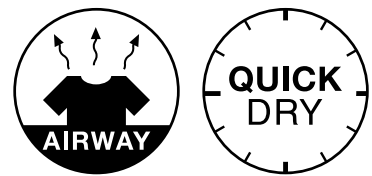
MILKY WMNS TRAINING T-SHIRT

NEW PRODUCT

SIZE: XS-XL

MATERIAL COMPOSITION:
92% POLYESTER 8% ELASTANE

SPECIFICATION:
- AIRWAY
- QUICKDRY



GOBLIN BLUE



MELLOW MAUVE



POTENT PURPLE



BLACK



MIDNIGHT NAVY



KARI WMNS TRAINING TANK TOP

SIZE: XS-XL

MATERIAL COMPOSITION:
92% POLYESTER, 8% ELSTANE

PREMIUM
COLLECTION

- SPECIFICATION:
- ULTRALIGHT
 - AIRWAY
 - QUICKDRY
 - IQ DRY TECH



MELLOW MAUVE



WOYSH WMNS TRAINING TOP

SIZE: XS-XL

MATERIAL COMPOSITION:
88% POLYESTER, 12% ELASTANE

SPECIFICATION:
-QUICKDRY



MELLOW MAUVE/PALE DOGWOOD

WIMIS WMNS TRAINING TANK TOP

SIZE: XS-XL

MATERIAL COMPOSITION:
92% NYLON, 8% ELASTANE

- SPECIFICATION:
- AIRWAY
 - QUICKDRY
 - IQ DRY TECH
 - REFLECTIVE ELEMENTS



MIDNIGHT NAVY



ININI WMNS TRAINING TANK TOP

SIZE: XS-XL

MATERIAL COMPOSITION: 88% POLYESTER,
12%ELASTANE

- SPECIFICATION:
- AIRWAY
 - QUICKDRY
 - IQ DRY TECH
 - REFLECTIVE ELEMENTS



CARMINE ROSE



IBINI WMNS TRAINING T-SHIRT

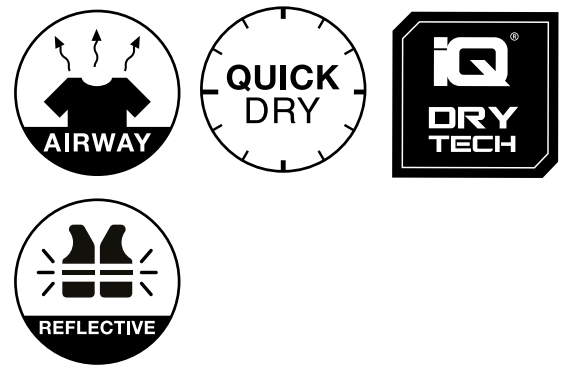
SIZE: XS-XL

MATERIAL COMPOSITION: 85% POLYESTER,
15% COTTON

- SPECIFICATION:
- AIRWAY
 - QUICKDRY
 - IQ DRY TECH
 - REFLECTIVE ELEMENTS



ANTHRACITE

Four circular icons are arranged in a 2x2 grid. The top-left icon shows a t-shirt with three upward-pointing arrows and the word "AIRWAY" below it. The top-right icon is a clock face with the words "QUICK DRY" in the center. The bottom-left icon shows a t-shirt with three horizontal lines and the word "REFLECTIVE" below it. The bottom-right icon is a square with the "IQ DRY TECH" logo.

MAYRA WMNS TRAINING TANK TOP

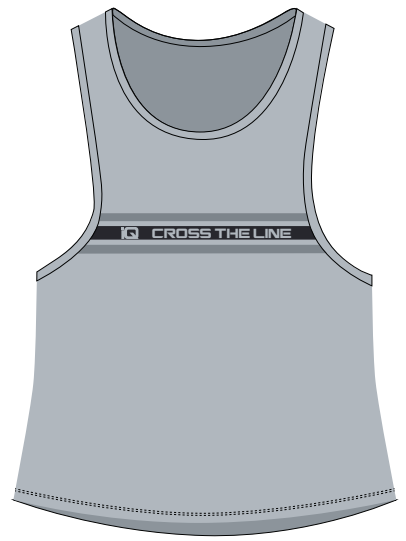
SIZE: XS-XL

MATERIAL COMPOSITION:
100% POLYESTER

NEW PRODUCT



MELLOW MAUVE



PEARL BLUE



MILY WMNS TRAINING TANK TOP

SIZE: XS-XL

MATERIAL COMPOSITION:
92% POLYESTER, 8% ELASTANE

- SPECIFICATION:
- AIRWAY
 - QUICKDRY



MELLOW MAUVE



BLACK

CARIA WMNS TRAINING SPORTS BRA

SIZE: XS-XL

MATERIAL COMPOSITION:
75% NYLON, 25% LYCRA

PREMIUM
COLLECTION

- SPECIFICATION:
- AIRWAY
 - QUICKDRY
 - IQ DRY TECH
 - MOLDED CUPS
 - LYCRA



STORMY WEATHER/PALE MAUVE

MALIA WMNS TRAINING SPORT BRA

SIZE: XS-XL

MATERIAL COMPOSITION:
75% NYLON, 25% LYCRA

PREMIUM
COLLECTION

SPECIFICATION:

- AIRWAY
- QUICKDRY
- IQ DRY TECH
- REMOVABLE CUPS
- LYCRA



STORMY WEATHER/PALE MAUVE



TORNA WMNS TRAINING SEAMLESS SPORT BRA

SIZE: XS-XL

MATERIAL COMPOSITION:
93% POLYAMIDE, 7% ELASTANE

PREMIUM
COLLECTION

SPECIFICATION:
- SEAMLESS



BLACK

 **CANRI WMNS** TRAINING SPORTS BRA

SIZE: XS-XL

MATERIAL COMPOSITION:
92% POLYAMIDE, 8% ELASTANE

SPECIFICATION:
- SEAMLESS



EBONY/BLACK

CLARA WMNS TRAINING SPORTS BRA

SIZE: XS-XL

MATERIAL COMPOSITION:
90% POLYAMIDE, 8% ELASTANE, 2% POLYESTER

- SPECIFICATION:
- QUICK DRY
 - SEAMLESS
 - REMOVABLE CUPS



PEARL BLUE/BLACK

CARMEN WMNS TRAINING SPORTS BRA

SIZE: XS-XL

MATERIAL COMPOSITION:
92% POLYAMIDE, 8% ELASTANE

- SPECIFICATION:
- QUICK DRY
 - SEAMLESS
 - REMOVABLE CUPS



CARMINE ROSE



MIDNIGHT NAVY



BLACK

IRAKIA WMNS TRAINING SPORTS BRA

SIZE: XS-XL

MATERIAL COMPOSITION:
92% POLYAMIDE 8% ELASTANE

- SPECIFICATION:
- AIRWAY
 - QUICKDRY
 - MOLDED CUPS
 - SEAMLESS



BLACK



LIVIA WMNS TRAINING PANTS

SIZE: XS-XL

MATERIAL COMPOSITION:
92% POLIESTER,
8% ELASTANE, 240 g/m²

- SPECIFICATION:
- AIRWAY
 - QUICKDRY
 - IQ DRY TECH



LIGHT GREY MELANGE

ONAYE WMNS TRAINING SWEATPANTS

SIZE: XS-XL

MATERIAL COMPOSITION:
92% POLYESTER, 8% ELASTANE

SPECIFICATION:
-AIRWAY
-QUICKDRY



BLACK



SEA TURTLE



PLAYA WMNS TRAINING LEGGINGS

SIZE: XS-XL

MATERIAL COMPOSITION:
73%POLYESTER, 27% ELASTANE

PREMIUM
COLLECTION

SPECIFICATION:

- AIRWAY
- QUICKDRY
- IQ DRY TECH



STORMY WEATHER/PALE MAUVE

NEGRA WMNS TRAINING LEGGINGS

SIZE: XS-XL

MATERIAL COMPOSITION:
87% NYLON, 13% LYCRA

PREMIUM
COLLECTION

- SPECIFICATION:
- AIRWAY
 - QUICKDRY
 - IQ DRY TECH
 - LYCRA
 - BACK POCKET



BLACK



 **SILVA WMNS** TRAINING LEGGINGS

SIZE: XS-XL

MATERIAL COMPOSITION:
92%POLYESTER
8%ELASTANE



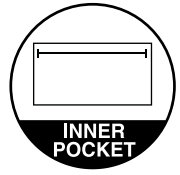
BLACK/ZEBRA PATTERN

AYLA WMNS TRAINING LEGGINGS

SIZE: XS-XL

MATERIAL COMPOSITION:
92% POLYESTER, 8% ELSTANE

- SPECIFICATION:
- AIRWAY
 - QUICKDRY
 - INNER POCKET



BLACK



MEDIEVAL BLUE/SURF THE WEB



KAIA WMNS TRAINING PANTS

SIZE: XS-XL

MATERIAL COMPOSITION:
88% POLYESTER 12% ELASTANE

- SPECIFICATION:
- AIRWAY
 - QUICKDRY
 - BACK POCKET



BLACK

SHOA WMNS TRAINING LEGGINGS

SIZE: XS-XL

MATERIAL COMPOSITION:
88% POLYESTER, 12% ELASTANE

SPECIFICATION:
-QUICKDRY



MELLOW MAUVE/PALE DOGWOOD

SILKY WMNS TRAINING LEGGINGS

SIZE: XS-XL

MATERIAL COMPOSITION: 92% POLYESTER,
8% ELASTANE, 160 g/m² BRUSH

SPECIFICATION:

- AIRWAY
- QUICKDRY

NEW PRODUCT



MIDNIGHT NAVY



GOBLIN BLUE



MELLOW MAUVE



BLACK



PINIA WMNS TRAINING SEAMLESS LEGGINGS

SIZE: XS-XL

MATERIAL COMPOSITION:
92% NYLON, 8% ELASTANE

SPECIFICATION:
- SEAMLESS



EBONY

ARINA WMNS TRAINING SEAMLESS LEGGINGS

SIZE: XS-XL

MATERIAL COMPOSITION:
95% NYLON, 5% ELASTANE

PREMIUM
COLLECTION

SPECIFICATION:
- SEAMLESS



BLACK

NEGRA 3/4 WMNS TRAINING LEGGINGS

SIZE: XS-XL

MATERIAL COMPOSITION:
87% NYLON, 13% LYCRA

PREMIUM
COLLECTION

- SPECIFICATION:
- AIRWAY
 - QUICKDRY
 - IQ DRY TECH
 - LYCRA
 - BACK POCKET



BLACK

SILKY 3/4 WMNS TRAINING LEGGINGS

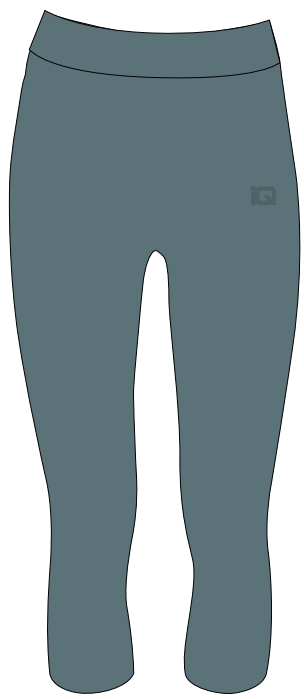
SIZE: XS-XL

MATERIAL COMPOSITION:
92% POLYESTER,
8% ELASTANE

- SPECIFICATION:
- AIRWAY
 - QUICKDRY



NEW PRODUCT



GOBLIN BLUE



MELLOW MAUVE



BLACK



NEGRA 1/2 WMNS TRAINING LEGGINGS

SIZE: XS-XL

MATERIAL COMPOSITION:
87% NYLON, 13% LYCRA

PREMIUM
COLLECTION

- SPECIFICATION:
- AIRWAY
 - QUICKDRY
 - IQ DRY TECH
 - LYCRA
 - BACK POCKET



BLACK



SILKY 1/2 WMNS TRAINING LEGGINGS

SIZE: XS-XL

MATERIAL COMPOSITION:
92% POLYESTER, 8% ELASTANE

SPECIFICATION:
- AIRWAY
- QUICKDRY



MELLOW MAUVE



BLACK

FIGA WMNS TRAINING SHORTS

SIZE: XS-XL

MATERIAL COMPOSITION:
86% POLYESTER, 14% ELASTANE

PREMIUM
COLLECTION

- SPECIFICATION:
- ULTRALIGHT
 - AIRWAY
 - QUICKDRY



MELLOW MAUVE/POTENT PURPLE

DELIA WMNS TRAINING SHORTS

SIZE: XS-XL

MATERIAL COMPOSITION:
94% POLYESTER, 6% ELASTANE /
100% POLYESTER



EBONY/MELLOW MAUVE

NEW PRODUCT



RAGIA II WMNS TRAINING SHORTS

SIZE: XS-XL

MATERIAL COMPOSITION:
94% POLYESTER, 6% ELASTANE

- SPECIFICATION:
- AIRWAY
 - QUICKDRY
 - BACK POCKET



MIDNIGHT NAVY



BLACK



 **YORAN** RUNNING JACKET

SIZE: S-XXL

MATERIAL COMPOSITION:
100% POLYESTER

SPECIFICATION:

- AIRWAY
- QUICKDRY
- VISIBLE AFTER DARK



ANTHRACITE/BLACK

ASLAN RUNNING JACKET

SIZE: S-XXL

MATERIAL COMPOSITION: 100% POLYESTER

NEW PRODUCT



ANTHRACITE/BLACK



IMMO RUNNING BLOUSE

SIZE: S-XXL

MATERIAL COMPOSITION:
84%POLYESTER, 16%ELASTANE

SPECIFICATION:

- AIRWAY
- QUICKDRY
- IQ DRY TECH
- VISIBLE AFTER DARK
- THUMB HOLES



BLACK/GREY MELANGE

ESTI LS RUNNING BLOUSE

SIZE: S-XXL

MATERIAL COMPOSITION:
100% POLYESTER

SPECIFICATION:

- AIRWAY
- QUICKDRY
- IQ DRY TECH
- VISIBLE AFTER DARK



FIERY RED PATTERN



NEW PRODUCT

ESTI RUNNING T-SHIRT

SIZE: S-XXL

MATERIAL COMPOSITION:
100% POLYESTER

- SPECIFICATION:
- AIRWAY
 - QUICKDRY
 - IQ DRY TECH
 - VISIBLE AFTER DARK



FIERY RED PATTERN



MONACO BLUE PATTERN

 **ESTI II** RUNNING T-SHIRT

SIZE: S-XXL

MATERIAL COMPOSITION:
83% POLYESTER, 17% ELASTANE

SPECIFICATION:

- AIRWAY
- QUICKDRY
- IQ DRY TECH
- VISIBLE AFTER DARK



FIERY RED PATTERN



 **ERINO** RUNNING T-SHIRT

SIZE: S-XXL

MATERIAL COMPOSITION:



NEW PRODUCT

MONACO BLUE

ETES RUNNING T-SHIRT

SIZE: S-XXL

MATERIAL COMPOSITION:
83% POLYESTER, 17% ELASTANE

- SPECIFICATION:
- AIRWAY
 - QUICKDRY
 - IQ DRY TECH
 - VISIBLE AFTER DARK

NEW PRODUCT



BLUE OPAL/FIERY RED PATTERN



BLACK



IMOS RUNNING TANK TOP

SIZE: S-XXL

MATERIAL COMPOSITION:
100% POLYESTER

- SPECIFICATION:
- AIRWAY
 - QUICKDRY
 - IQ DRY TECH
 - REFLECTIVE ELEMENTS



BLACK

 **CRUZI** RUNNING SEAMLESS LEGGINGS

SIZE: S-XL

MATERIAL COMPOSITION: 62% POLYESTER,
30% POLYAMID, 8% ELASTANE, 280 g/m²

ANTHRACITE/RED

EBONY/RED

ERSO RUNNING LEGGINGS

SIZE: S-XXL

MATERIAL COMPOSITION:
92% POLYESTER, 8% ELASTANE

- SPECIFICATION:
- AIRWAY
 - QUICKDRY
 - VISIBLE AFTER DARK
 - BACK POCKET



BLACK

NEW PRODUCT

RONSE RUNNING LEGGINGS

SIZE: S-XL

MATERIAL COMPOSITION: 75% NYLON,
25% ELASTANE

- SPECIFICATION:
- BREATHABILITY
 - AIRWAY
 - QUICKDRY
 - VISIBLE AFTER DARK
 - MICROFLEECE LINED

BREATH ABILITY

AIRWAY

QUICK DRY

VISIBLE AFTER DARK

MICRO FLEECE LINED



BLACK/REFLECTIVE PATTERN



ARIZO 1/2 RUNNING TIGHTS

SIZE: S-XXL

MATERIAL COMPOSITION:
92% POLYESTER, 8% ELASTANE

- SPECIFICATION:
- AIRWAY
 - QUICKDRY
 - IQ DRY TECH
 - VISIBLE AFTER DARK



BLACK

NEW PRODUCT

VIER RUNNING SHORTS

SIZE: S-XXL

MATERIAL COMPOSITION:
92% POLYESTER, 8% ELASTANE

- SPECIFICATION:
- AIRWAY
 - QUICKDRY
 - IQ DRY TECH
 - VISIBLE AFTER DARK



BLACK/FIERY RED



MONACO BLUE/BLACK



PORIO RUNNING SHORTS

SIZE: S-XXL

MATERIAL COMPOSITION:
100% POLYESTER / 92% POLYESTER,
8% ELASTANE



BLACK

NEW PRODUCT

RANYA WMNS RUNNING BLOUSE

SIZE: XS-XL

MATERIAL COMPOSITION:
 SHELL: 92% POLYESTER, 8% ELASTANE
 LINING: 100% POLYESTER

- SPECIFICATION:
- AIRWAY
 - QUICKDRY
 - IQ DRY TECH
 - RVISIBLE AFTER DARK
 - THUMB HOLES
 - MICROFLEECE LINED



ANTHRACITE/BLACK

ASLANA WMNS RUNNING BLOUSE

SIZE: XS-XL

MATERIAL COMPOSITION:
100% POLYESTER

NEW PRODUCT



BLACK



PRAIA WMNS RUNNING T-SHIRT

SIZE: XS-XL

MATERIAL COMPOSITION:
90% POLYESTER, 10% ELASTANE /
100% POLYESTER

NEW PRODUCT



ACID LIME/DEEP TEAL



DEEP TEAL/CARMINE ROSE



CARMINE ROS/NIGHTSHADE



HIDA WMNS RUNNING T-SHIRT

SIZE: XS-XL

MATERIAL COMPOSITION:
100% POLYESTER

NEW PRODUCT



 **RAYA II WMNS** RUNNING T-SHIRT

SIZE: XS-XL

MATERIAL COMPOSITION:
85% POLYESTER, 15% ELASTANE

SPECIFICATION:

- AIRWAY
- QUICKDRY
- IQ DRY TECH
- VISIBLE AFTER DARK



CARMINE ROSE



 **RAMIDA WMNS** RUNNING T-SHIRT

SIZE: XS-XL

MATERIAL COMPOSITION:
85% POLYESTER, 15% ELASTANE

SPECIFICATION:

- AIRWAY
- QUICKDRY
- IQ DRY TECH
- VISIBLE AFTER DARK



WHITE



LUNA WMNS RUNNING LEGGINGS

SIZE: XS-XL

MATERIAL COMPOSITION:
84% POLYESTER, 16% ELASTANE

SPECIFICATION:

- AIRWAY
- QUICKDRY
- IQ DRY TECH
- VISIBLE AFTER DARK
- BACK POCKET



DEEP TEAL/ACID LIME

ADIHA II WMNS RUNNING LEGGINGS

SIZE: XS-XL

MATERIAL COMPOSITION:
92% POLYESTER, 8% ELASTANE

- SPECIFICATION:
- ULTRALIGHT
 - AIRWAY
 - QUICKDRY
 - REFLECTIVE ELEMENTS
 - VISIBLE AFTER DARK
 - INNER POCKET



BLACK/REFLECTIVE PATTERN

VERI WMNS RUNNING LEGGINGS

SIZE: XS-XL

MATERIAL COMPOSITION: 65% NYLON,
35% ELASTANE

SPECIFICATION:

- BREATHABILITY
- AIRWAY
- QUICKDRY
- VISIBLE AFTER DARK
- MICROFLEECE
- BACK POCKET



BLACK

KIARI WMNS RUNNING LEGGINGS

SIZE: XS-XL

MATERIAL COMPOSITION:
92% POLYESTER, 8% ELASTANE

- SPECIFICATION:
- VISIBLE AFTER DARK
 - AUDIO POCKET
 - MICROFLEECE LINED



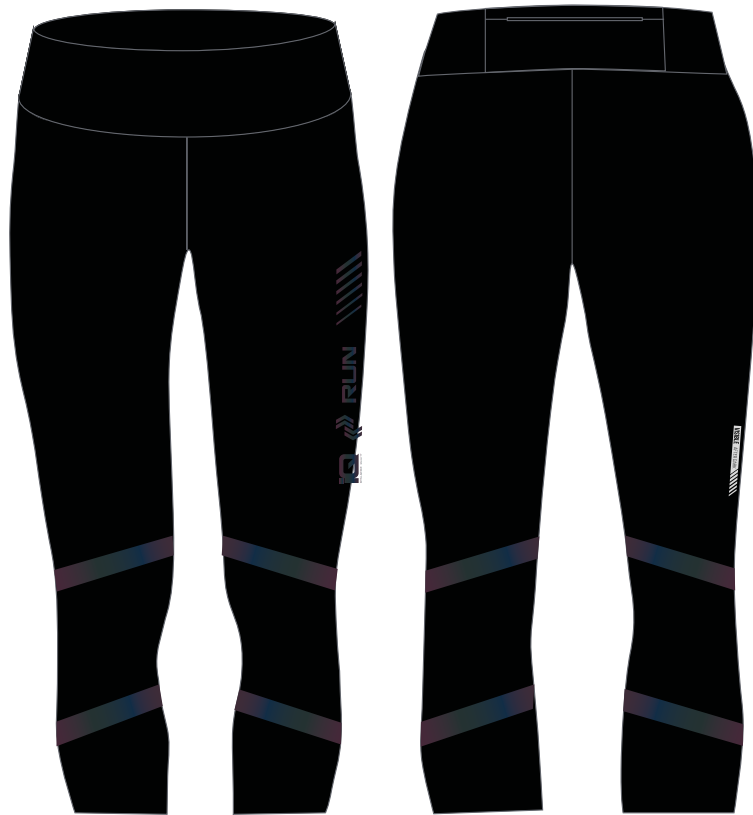
BLACK

NUKIA 3/4 WMNS RUNNING LEGGINGS

SIZE: XS-XL

MATERIAL COMPOSITION:
84% POLYESTER, 16% ELASTANE /
100% POLYESTER

NEW PRODUCT



BLACK

LUNA 3/4 WMNS RUNNING LEGGINGS

SIZE: XS-XL

MATERIAL COMPOSITION:
84% POLYESTER, 16% ELASTANE

SPECIFICATION:

- AIRWAY
- QUICKDRY
- IQ DRY TECH
- VISIBLE AFTER DARK
- BACK POCKET



DEEP TEAL/ACID LIME

RIANA WMNS RUNNING SHORTS

SIZE: XS-XL

MATERIAL COMPOSITION:
94% POLYESTER, 6% ELASTANE/
92% POLYESTER, 8% ELASTANE

NEW PRODUCT



ACID LIME



DEEP TEAL/CARMINE ROSE

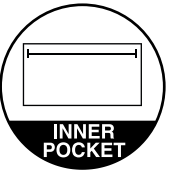
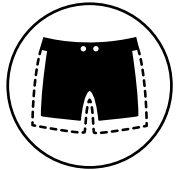
VIERA WMNS RUNNING SHORTS

SIZE: XS-XL

MATERIAL COMPOSITION:
88% POLYESTER, 12% ELASTANE

SPECIFICATION:

- AIRWAY
- QUICKDRY
- VISIBLE AFTER DARK
- BUILT-IN SHORTS
- INNER POCKET
- AUDIO HOLE FOR HEADPHONES



BLACK



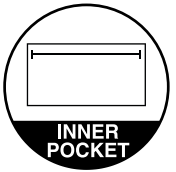
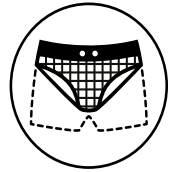
 **NAIMA WMNS** RUNNING SHORTS

SIZE: XS-XL

MATERIAL COMPOSITION:
92% POLYESTER, 8% ELASTANE

SPECIFICATION:

- AIRWAY
- QUICKDRY
- VISIBLE AFTER DARK
- BUILT-IN-BRIEFS
- INNER POCKET



ACID LIME/DEEP TEAL

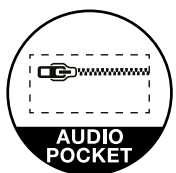
RUNNO RUNNING TRAIL JACKET

SIZE: S-XXL

MATERIAL COMPOSITION:
100% POLYESTER

SPECIFICATION:

- AIRWAY
- VENTILATION HOLES
- VISIBLE AFTER DARK
- AUDIO POCKET
- POUCH POCKET



POSEIDON/MYKONOS BLUE



RIMMO RUNNING TRAIL BLOUSE

SIZE: S-XL

MATERIAL COMPOSITION: 84% POLYESTER,
16% ELASTANE

SPECIFICATION:

- BREATHABILITY
- AIRWAY
- QUICKDRY
- VISIBLE AFTER DARK
- THUMB HOLES



BLUE/HAWAIIAN OCEAN

TRAILO RUNNING TRAIL T-SHIRT

SIZE: S-XXL

MATERIAL COMPOSITION:
82% POLYESTER, 18% ELASTANE

SPECIFICATION:

- AIRWAY
- QUICKDRY
- IQ DRY TECH
- VISIBLE AFTER DARK
- BACK POCKET



HAWAIIAN OCEAN/MYKONOS BLUE

TREILO RUNNING TRAIL T-SHIRT

SIZE: S-XXL

MATERIAL COMPOSITION:
82% POLYESTER, 18% ELASTANE /
92% POLYESTER, 8% ELASTANE



EXUBERANCE DOTS/POSEIDON

TRAIL

NEW PRODUCT

TRAINO RUNNING TRAIL LEGGINGS

SIZE: S-XL

MATERIAL COMPOSITION: 85% POLYESTER,
15% ELASTANE

SPECIFICATION:

- BREATHABILITY
- AIRWAY
- QUICKDRY
- VISIBLE AFTER DARK
- BACK POCKET



BLACK/EXUBERANCE

AILO 1/2 RUNNING TRAIL TIGHTS

SIZE: S-XXL

MATERIAL COMPOSITION:

80% POLYESTER, 20% JERSEY WITH LYCRA

SPECIFICATION:

- AIRWAY
- QUICKDRY
- VISIBLE AFTER DARK
- BACK POCKET



BLACK

 **ERIO** RUNNING TRAIL SHORTS

SIZE: S-XXL

MATERIAL COMPOSITION:
91% POLYESTER, 9% ELASTANE /
90% POLYESTER, 10% ELASTANE

TRAIL

NEW PRODUCT



POSEIDON



RUNNO WMNS RUNNING TRAIL JACKET

SIZE: XS-XL

MATERIAL COMPOSITION:
100% POLYESTER

SPECIFICATION:

- AIRWAY
- VENTILATION HOLES
- VISIBLE AFTER DARK
- AUDIO POCKET
- POUCH POCKET



DARK PURPLE TRIANGLE



RIMMO WMNS RUNNING TRAIL BLOUSE

SIZE: S-XL

MATERIAL COMPOSITION: 84% POLYESTER,
16% ELASTANE

SPECIFICATION:

- BREATHABILITY
- AIRWAY
- QUICKDRY
- VISIBLE AFTER DARK
- THUMB HOLES



BLACK/DARK PURPLE

TRAILO WMNS RUNNING TRAIL JACKET

SIZE: XS-XL

MATERIAL COMPOSITION:
82% POLYESTER, 18% ELASTANE

- SPECIFICATION:
- AIRWAY
 - QUICKDRY
 - IQ DRY TECH
 - VISIBLE AFTER DARK
 - BACK POCKET



DARK PURPLE TRIANGLE/BLACK



TREILO WMNS RUNNING TRAIL T-SHIRT

SIZE: XS-XL

MATERIAL COMPOSITION:
82% POLYESTER, 18% ELASTANE /
92% POLYESTER, 8% ELASTANE

NEW PRODUCT



FESTIVAL FUCHSIA/DARK PURPLE

TRAINO WMNS RUNNING TRAIL LEGGINGS

SIZE: XS-XL

MATERIAL COMPOSITION: 85% POLYESTER,
15% ELASTANE

SPECIFICATION:

- BREATHABILITY
- AIRWAY
- QUICKDRY
- VISIBLE AFTER DARK
- BACK POCKET



BLACK/FESTIVAL FUCHSIA

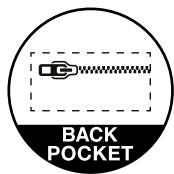
ERIO WMNS RUNNING TRAIL SHORTS

SIZE: XS-XL

MATERIAL COMPOSITION:
88% POLYESTER, 12% ELASTANE

SPECIFICATION:

- AIRWAY
- QUICKDRY
- BUILT-IN-BRIEFS
- POCKET FOR THE JACKET
- VISIBLE AFTER DARK
- BACK POCKET



BLACK/DARK PURPLE

RAILA WMNS RUNNING TRAIL SKIRT

SIZE: XS-XL

MATERIAL COMPOSITION:
100% POLYESTER / 88% POLYESTER,
12% ELASTANE



DARK PURPLE TRIANGLE

NEW PRODUCT

YOGINI WMNS YOGA BLOUSE

SIZE: XS-XL

MATERIAL COMPOSITION: 75% NYLON,
25% ELASTANE

- SPECIFICATION:
- BREATHABILITY
 - AIRWAY
 - QUICKDRY



MELLOW MAUVE



STRETCHI WMNS YOGA TOP

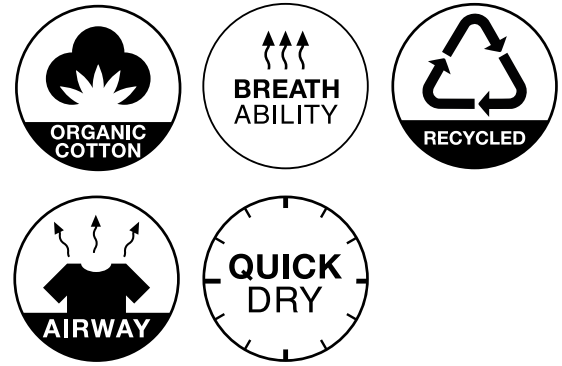
SIZE: XS-XL

MATERIAL COMPOSITION: 94% COTTON,
6% ELASTANE

- SPECIFICATION:
- ORGANIC COTTON
 - BREATHABILITY
 - RECYCLED
 - AIRWAY
 - QUICKDRY



MELLOW MAUVE



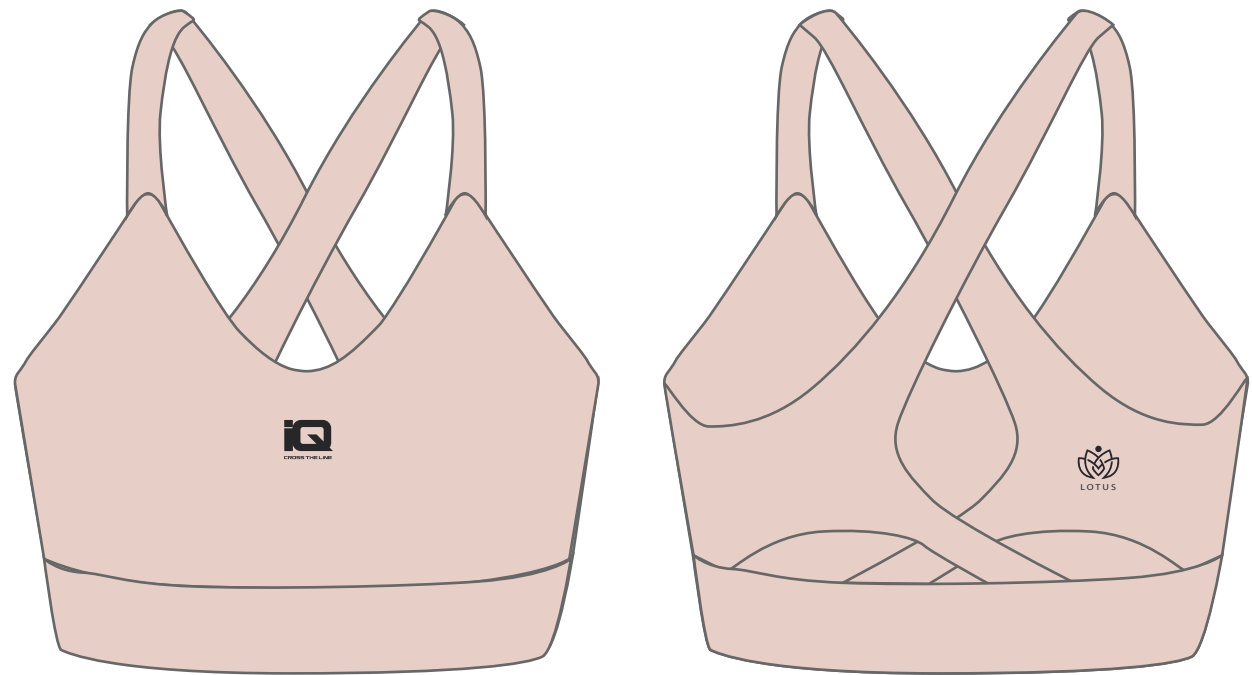
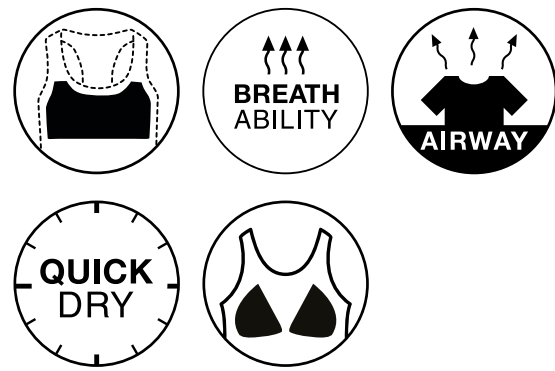
- ORGANIC COTTON
- BREATH ABILITY
- RECYCLED
- AIRWAY
- QUICK DRY

YOGIA WMNS YOGA BRA

SIZE: XS-XL

MATERIAL COMPOSITION:
SHELL: 75% NYLON, 25% ELASTANE
LINING: 88% POLYESTER, 12% ELASTANE

- SPECIFICATION:
- BUILT-IN BRA
 - BREATHABILITY
 - AIRWAY
 - QUICKDRY
 - MOULDED CUPS



SILVER PEONY

LEMINI WMNS YOGA LEGGINGS

SIZE: XS-XL

MATERIAL COMPOSITION: 75% NYLON,
25% ELASTANE

- SPECIFICATION:
- BREATHABILITY
 - AIRWAY
 - QUICKDRY



PURPLE ASH



LAIKA WMNS T-SHIRT

SIZE: XS-XL

MATERIAL COMPOSITION:

SPECIFICATION:



NEW PRODUCT

MIDNIGHT NAVY

MACARA WMNS LEGGINGS

SIZE: XS-XL

MATERIAL COMPOSITION:

SPECIFICATION:

NEW PRODUCT



BLACK



OKANE III JRB ACTIVE HOODIE SWEATSHIRT

SIZE: 140-164

MATERIAL COMPOSITION: 92% POLYESTER,
8% ELASTANE, 230g

- SPECIFICATION:
- AIRWAY
 - QUICKDRY
 - IQ DRY TECH
 - REFLECTIVE ELEMENTS



BLACK/WHITE

 **EMRIS JRB** ACTIVE SWEATPANTS

SIZE: 140-164

MATERIAL COMPOSITION: 92% POLYESTER,
8% ELASTANE, 230g

SPECIFICATION:

- AIRWAY
- QUICKDRY
- REFLECTIVE ELEMENTS



BLACK/WHITE

OREO JRB ACTIVE T-SHIRT

SIZE: 140-164

MATERIAL COMPOSITION:
92% POLYESTER, 8% ELASTANE, 170 g

- SPECIFICATION:
- AIRWAY
 - QUICKDRY
 - IQ DRY TECH
 - REFLECTIVE ELEMENTS



WHITE



COLO JRB ACTIVE T-SHIRT

SIZE: 140-164

MATERIAL COMPOSITION:
100%POLYESTER

- SPECIFICATION:
- AIRWAY
 - QUICKDRY
 - IQ DRY TECH



TOTAL ECLIPSE/DEEP LAGOON

 **AMER JRB** ACTIVE SHORTS

SIZE: 140-164

MATERIAL COMPOSITION:
100% POLYESTER



DEEP LAGOON

 **MILO JRB** ACTIVE SHORTS

SIZE: 140-164

MATERIAL COMPOSITION:

NEW PRODUCT



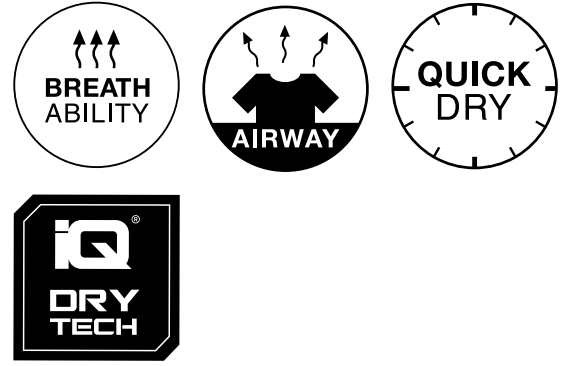
BLACK

SIMBA JRG ACTIVE SLEGGINGS

SIZE: 140-164

MATERIAL COMPOSITION: 92% POLYESTER,
8% ELASTANE

- SPECIFICATION:
- BREATHABILITY
 - AIRWAY
 - QUICKDRY
 - IQ DRY TECH



BREATH ABILITY

AIRWAY

QUICK DRY

IQ DRY TECH



BLACK BEAUTY/ROSE TAN

KELLY JRG ACTIVE T-SHIRT

SIZE: 140-164

MATERIAL COMPOSITION:
92% POLYESTER, 8% ELASTANE

SPECIFICATION:

- AIRWAY
- QUICKDRY
- IQ DRY TECH
- REFLECTIVE ELEMENTS



ROSE TAN



MIHA JRG ACTIVE T-SHIRT

SIZE: 140-164

MATERIAL COMPOSITION:
100% POLYESTER

- SPECIFICATION:
- ULTRALIGHT
 - AIRWAY
 - QUICKDRY
 - IQ DRY TECH



WHITE

CLAI JRG ACTIVE BRA

SIZE: 140-164

MATERIAL COMPOSITION:
92% POLYESTER, 8% ELASTANE

- SPECIFICATION:
- AIRWAY
 - QUICKDRY
 - IQ DRY TECH



BLACK BEAUTY



ROSE TAN

 **ARILA II JRG** ACTIVE SHORTS

SIZE: 140-164

MATERIAL COMPOSITION:
94% POLYESTER, 6% ELASTANE



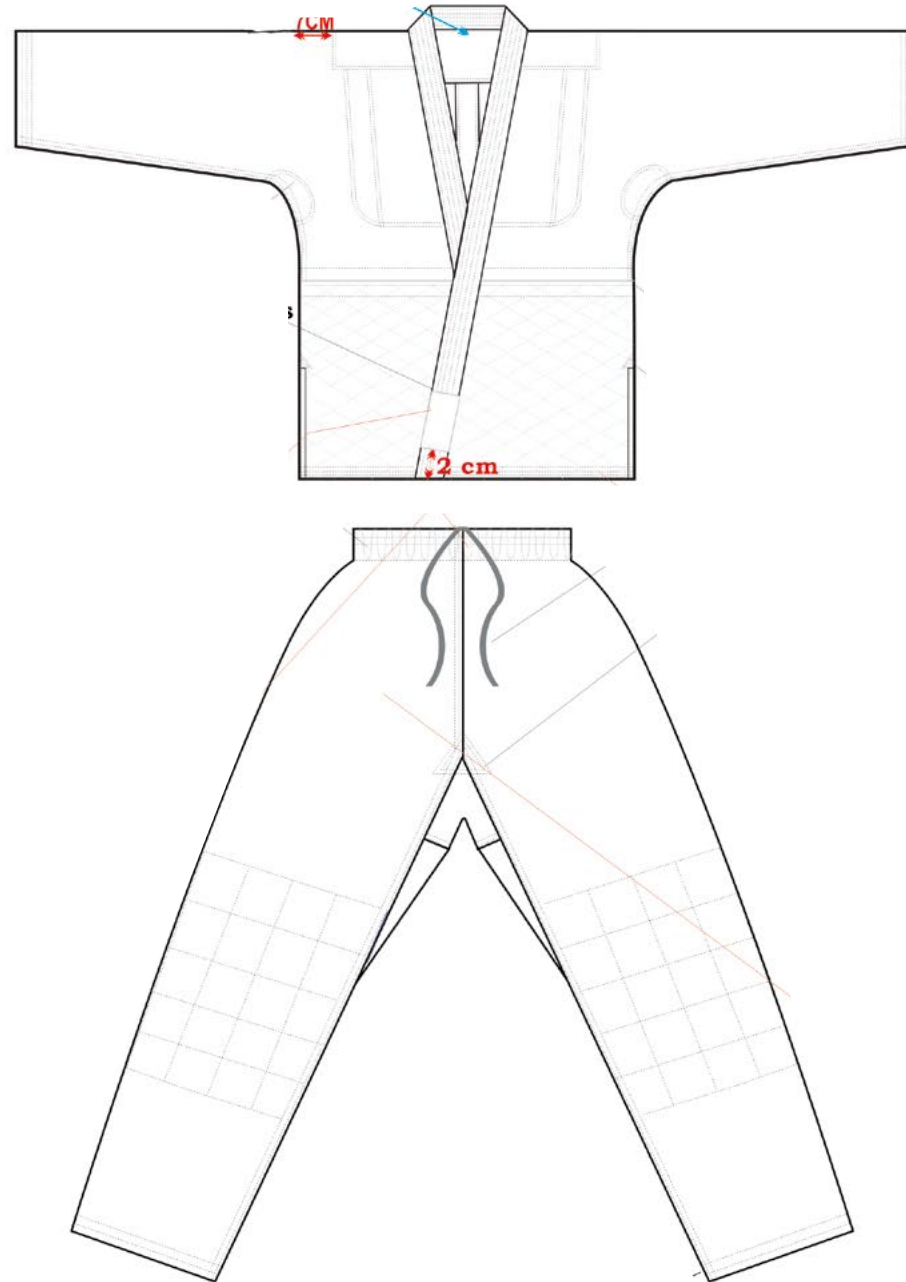
BLACK/ANIMAL PATTERN

NEW PRODUCT

KIMIASI 1.0 JR KIMONO

SIZE: 100-150

MATERIAL COMPOSITION:
100% COTTON
GRAMMAGE: 7-OZ

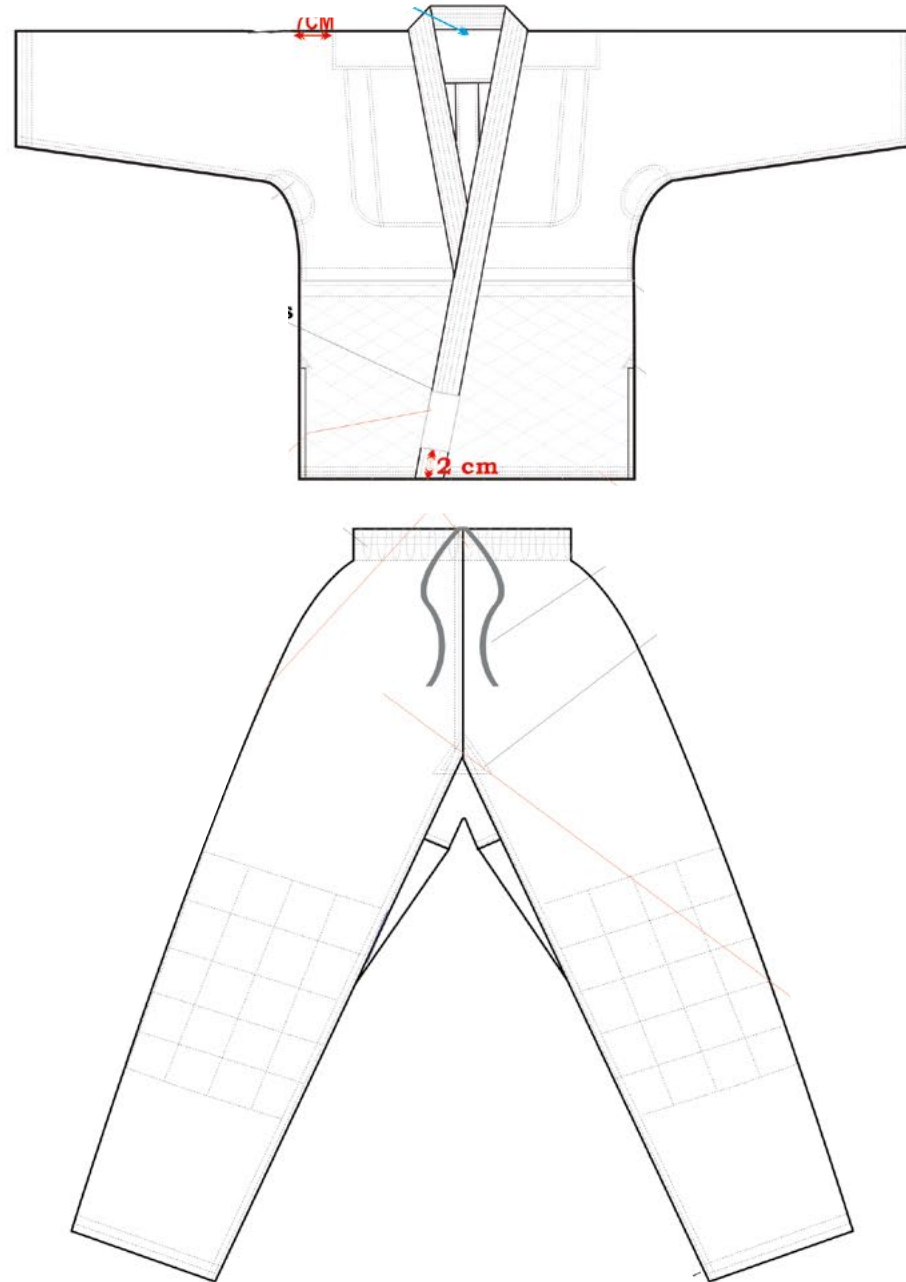


WHITE

JUDISU 1.0 JR KIMONO

SIZE: 100-150

MATERIAL COMPOSITION:
100% COTTON
GRAMMAGE: 7-OZ



WHITE

MOVE WMNS TRAINING HEADBAND

FITNESS
ACCESSORIES

SIZE: ONE SIZE

MATERIAL COMPOSITION:
85% NYLON, 15% ELASTANE

SPECIFICATION:
- AIR WAY
- QUICKDRY
- VISIBLE AFTER DARK



GOBLIN BLUE



MIDNIGHT NAVY



MELLOW MAUVE



BLACK



MOVE JRG ACTIVE HEADBAND

ACTIVE ACCESSORIES

NEW PRODUCT

SIZE: ONE SIZE

MATERIAL COMPOSITION:
85% NYLON, 15% ELASTANE

- SPECIFICATION:
- AIR WAY
 - QUICKDRY
 - VISIBLE AFTER DARK



ROSE TAN



TRIANGLE PATTERN

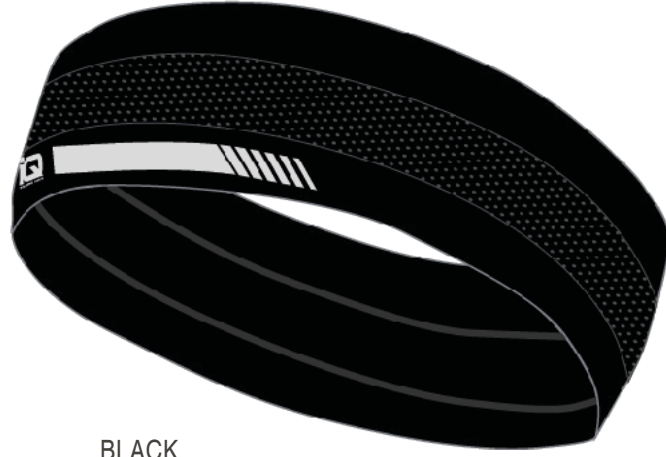


KEEP RUNNING HEADBAND

SIZE: ONE SIZE

MATERIAL COMPOSITION:
65% POLYESTER, 28% POLYAMIDE,
7% ELASTANE

SPECIFICATION:
- AIR WAY
- QUICKDRY



BLACK



NIGHTSHADE



ODILE TRAINING HEADBAND

SIZE: ONE SIZE

MATERIAL COMPOSITION:
85% POLYESTER, 15% ELASTANE

FITNESS
ACCESSORIES

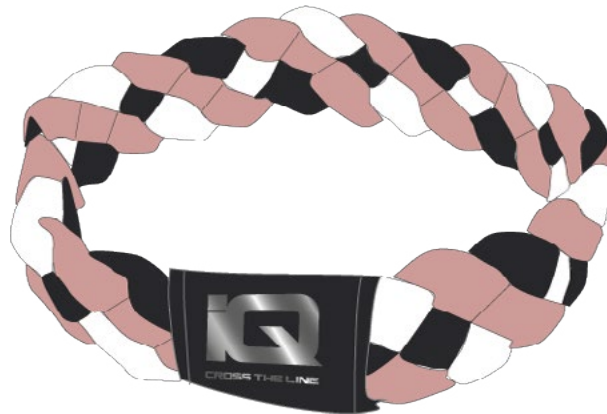
NEW PRODUCT



PINK/VIOLET



BLUE/NAVY



BLACK/PINK/WHITE

 **HARO WMNS** RUNNING HEADBAND

SIZE: ONE SIZE

MATERIAL COMPOSITION:

FITNESS
ACCESSORIES

NEW PRODUCT



BLACK



PEARL BLUE



PALE MAUVE



GYM WMNS SET TRAINING HEADBAND

FITNESS
ACCESSORIES

SIZE: ONE SIZE

MATERIAL COMPOSITION:
85% POLYESTER, 15% ELASTANE



BLACK/MELLOW MAUVE/DOTS PATTERN

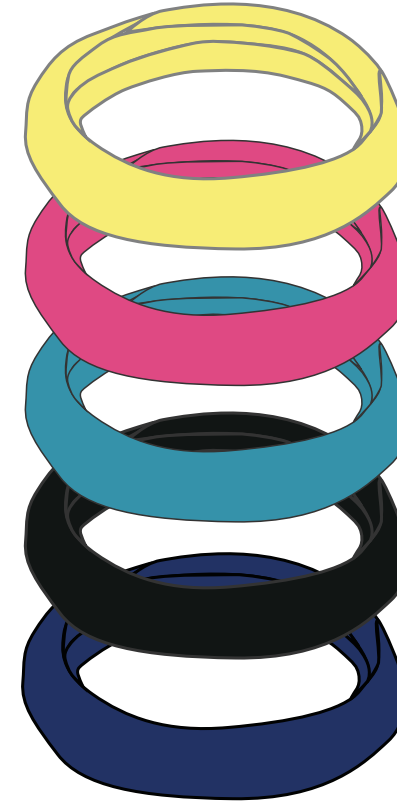


ACID LIME/GOBLIN BLUE/POTENT PURPLE

 **FLEXI** ACTIVE HAIR BANDS SET

SIZE: ONE SIZE

MATERIAL COMPOSITION:
85% POLYESTER, 15% ELASTANE

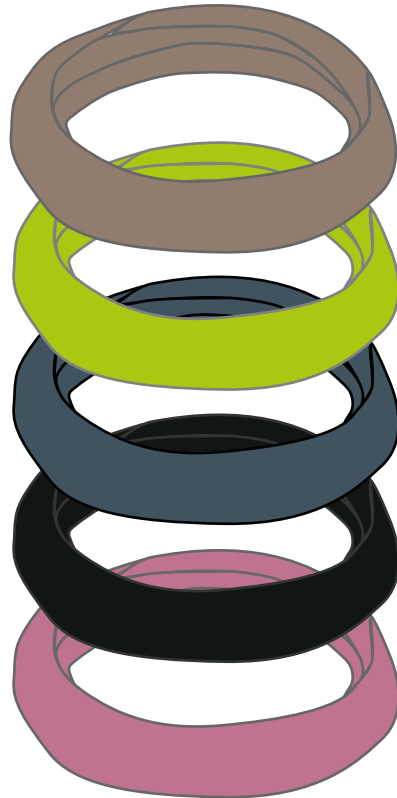


MULTICOLOUR

 **FLEXIBEL** TRAINING HAIR BANDS SET

SIZE: ONE SIZE

MATERIAL COMPOSITION:
85% NYLON, 15% ELASTANE



BEIGE/SELEDINE/NAVY/BLACK/PINK

GYMBY TRAINING WRISTBAND

SIZE: ONE SIZE

MATERIAL COMPOSITION:
85% POLYESTER, 15% ELASTANE



DEEP LAGOON



ACID LIME



ANTHRACITE



MELLOW MAUVE

ROME RUNNING CAP

SIZE: ONE SIZE

MATERIAL COMPOSITION:
95% POLYESTER, 5% ELASTANE

SPECIFICATION:
- AIR WAY
- QUICKDRY
- VISIBLE AFTER DARK



MOONLIT OCEAN/REFLECTIVE



DIVA BLUE/REFLECTIVE



BLACK/REFLECTIVE

ROME WMNS RUNNING CAP

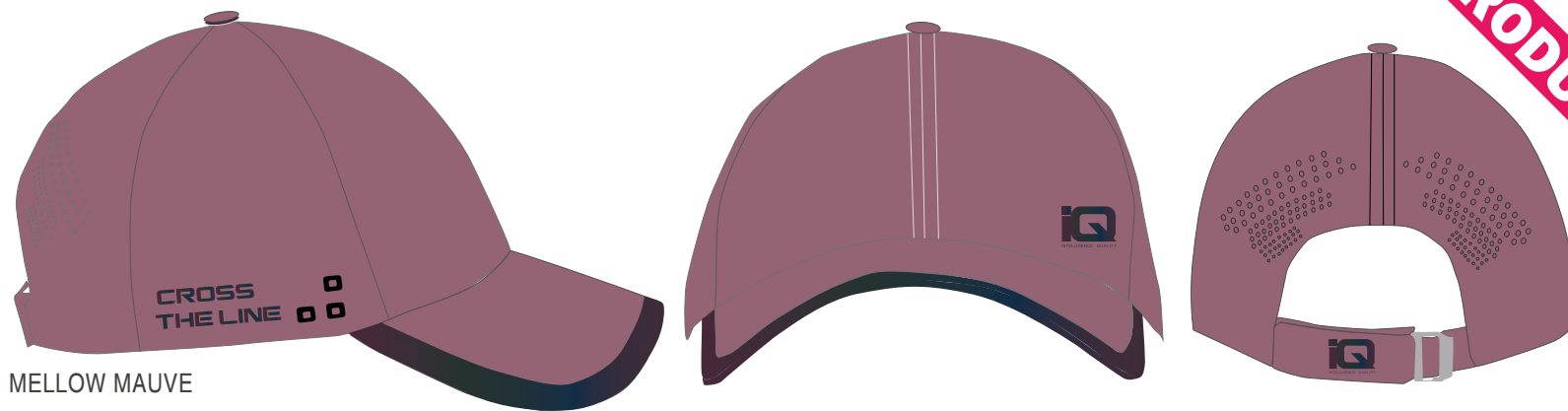
RUNNING
ACCESSORIES

NEW PRODUCT

SIZE: ONE SIZE

MATERIAL COMPOSITION:
95% POLYESTER, 5% ELASTANE

SPECIFICATION:
- AIR WAY
- QUICKDRY
- VISIBLE AFTER DARK



CARMINE ROSE/REFLECTIVE



WHITE/REFLECTIVE



BLACK/REFLECTIVE



ZONE RUNNING CAP

SIZE: ONE SIZE

MATERIAL COMPOSITION:
100% POLYESTER

SPECIFICATION:

- AIR WAY
- QUICKDRY
- VISIBLE AFTER DARK



BLACK

ZONE WMNS RUNNING CAP

SIZE: ONE SIZE

MATERIAL COMPOSITION:
100% POLYESTER

SPECIFICATION:

- AIR WAY
- QUICKDRY
- VISIBLE AFTER DARK



ACID LIME/DEEP TEAL



CARMINE ROSE/NIGHTSHADE

RUNNING
ACCESSORIES

NEW PRODUCT

FRAIS WMNS RUNNING CAP

SIZE: ONE SIZE

MATERIAL COMPOSITION:
100% POLYESTER

SPECIFICATION:

- AIR WAY
- QUICKDRY
- VISIBLE AFTER DARK



BLACK/REFLECTIVE

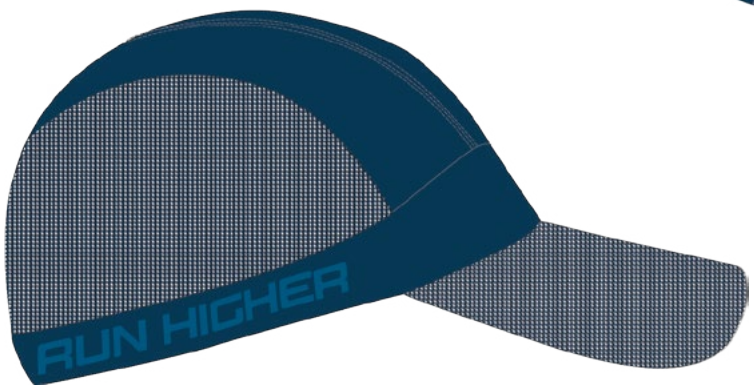
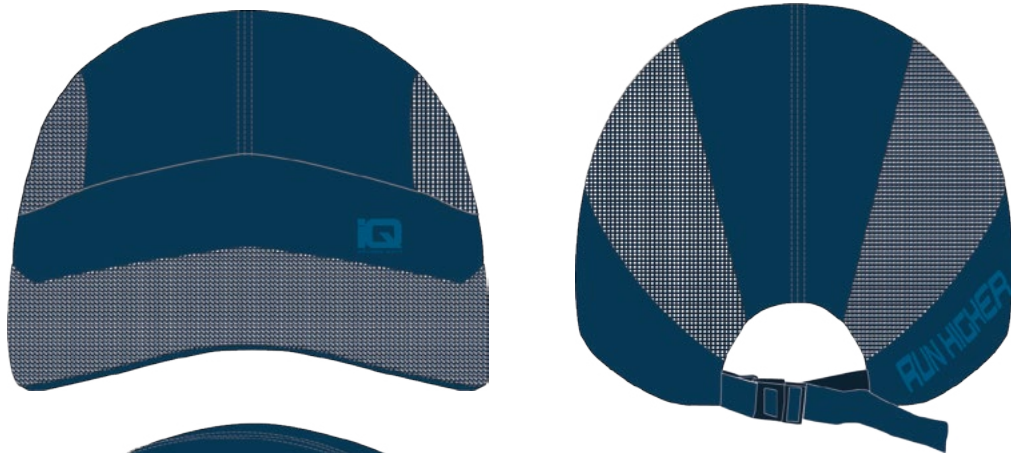


TRACE RUNNING TRAIL CAP

SIZE: ONE SIZE

MATERIAL COMPOSITION:
100% POLYESTER

- SPECIFICATION:
- AIR WAY
 - QUICKDRY
 - VISIBLE AFTER DARK



MYKONOS BLUE

TRACE WMNS RUNNING TRAIL CAP

SIZE: ONE SIZE

MATERIAL COMPOSITION:
100% POLYESTER

SPECIFICATION:

- AIR WAY
- QUICKDRY
- VISIBLE AFTER DARK



DARK PURPLE

HAUTE RUNNING VISOR

SIZE: ONE SIZE

MATERIAL COMPOSITION:
100% POLYESTER

SPECIFICATION:

- AIR WAY
- QUICKDRY
- VISIBLE AFTER DARK



FESTIVAL FUCHSIA



HAWAIIAN OCEAN

VIKO RUNNING TRAIL HEADBAND

SIZE: 25 x 8 cm

MATERIAL COMPOSITION:
85% NYLON, 15% ELASTANE



POSEIDON



FESTIVAL FUCHSIA TRIANGLE



FIERY RED



BLACK



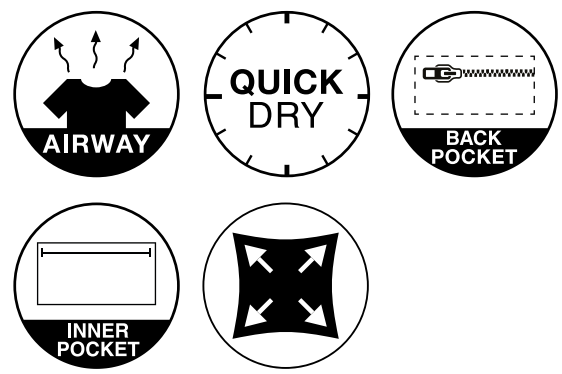
NIGHTSHADE/CARMINE ROSE

ROUTE RUNNING TRAIL BELT

SIZE: S/M, L/XL

MATERIAL COMPOSITION:
96% NYLON, 4% ELASTIC

- SPECIFICATION:
- QUICKDRY
 - AIR WAY
 - BACK POCKET
 - INNER POCKET
 - ELASTIC



BLACK



ALPEN II RUNNING HAT

SIZE: ONE SIZE

MATERIAL COMPOSITION:
93% NYLON, 7% ELASTANE

SPECIFICATION:
- SEAMLESS



BLACK

ALPEN II WMNS RUNNING HAT

SIZE: ONE SIZE

MATERIAL COMPOSITION:
93% NYLON, 7% ELASTANE

SPECIFICATION:
- SEAMLESS



NIGHTSHADE



 **ARDAL** RUNNING HEADBAND

SIZE: ONE SIZE

MATERIAL COMPOSITION:
65% POLYESTER, 28% NYLON, 7% ELASTANE



BLACK

 **SUNEMA II** RUNNING HAT

SIZE: ONE SIZE

MATERIAL COMPOSITION:
95% POLYESTER, 5% ELASTANE

SPECIFICATION:
- MICROFLEECE LINED
- VISIBLE AFTER DARK



DARK GRAY MELANGE

 **SUNEMA II WMNS** RUNNING HAT

SIZE: ONE SIZE

MATERIAL COMPOSITION:
95% POLYESTER, 5% ELASTANE

SPECIFICATION:
- MICROFLEECE LINED
- VISIBLE AFTER DARK



DARK GRAY MELANGE

MANES RUNNING NECKWARMER

SIZE: ONE SIZE

MATERIAL COMPOSITION:
95% POLYESTER, 5% ELASTANE

SPECIFICATION:
- MICROFLEECE LINED
- VISIBLE AFTER DARK



DARK GRAY MELANGE

CORSA RUNNING HAT

SIZE: ONE SIZE

MATERIAL COMPOSITION: 95% POLYESTER,
5% ELASTANE

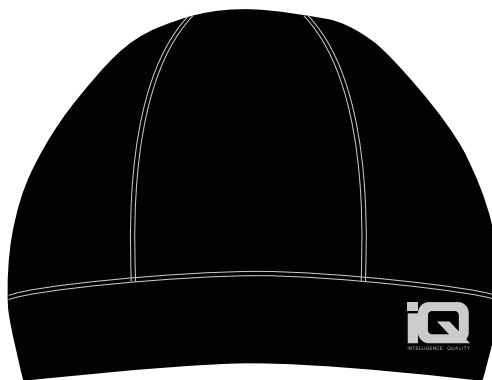
SPECIFICATION:
- VISIBLE AFTER DARK

RUNNING
ACCESSORIES

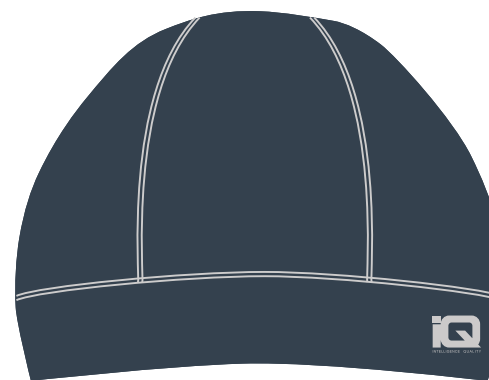
NEW PRODUCT



BLUE



BLACK



MIDNIGHT NAVY

ROCSA RUNNING HEADBAND

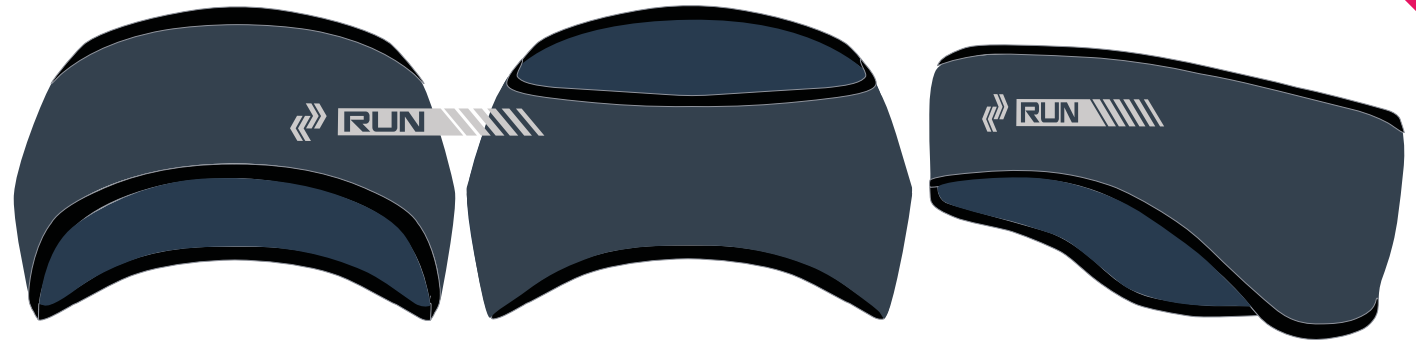
SIZE: ONE SIZE

MATERIAL COMPOSITION: 95% POLYESTER,
5% ELASTANE

SPECIFICATION:
- VISIBLE AFTER DARK

RUNNING
ACCESSORIES

NEW PRODUCT



MIDNIGHT NAVY



ROCSA WMNS RUNNING HEADBAND

RUNNING
ACCESSORIES

NEW PRODUCT

SIZE: ONE SIZE

MATERIAL COMPOSITION: 95% POLYESTER,
5% ELASTANE

SPECIFICATION:
- VISIBLE AFTER DARK



NIGHTSHADE



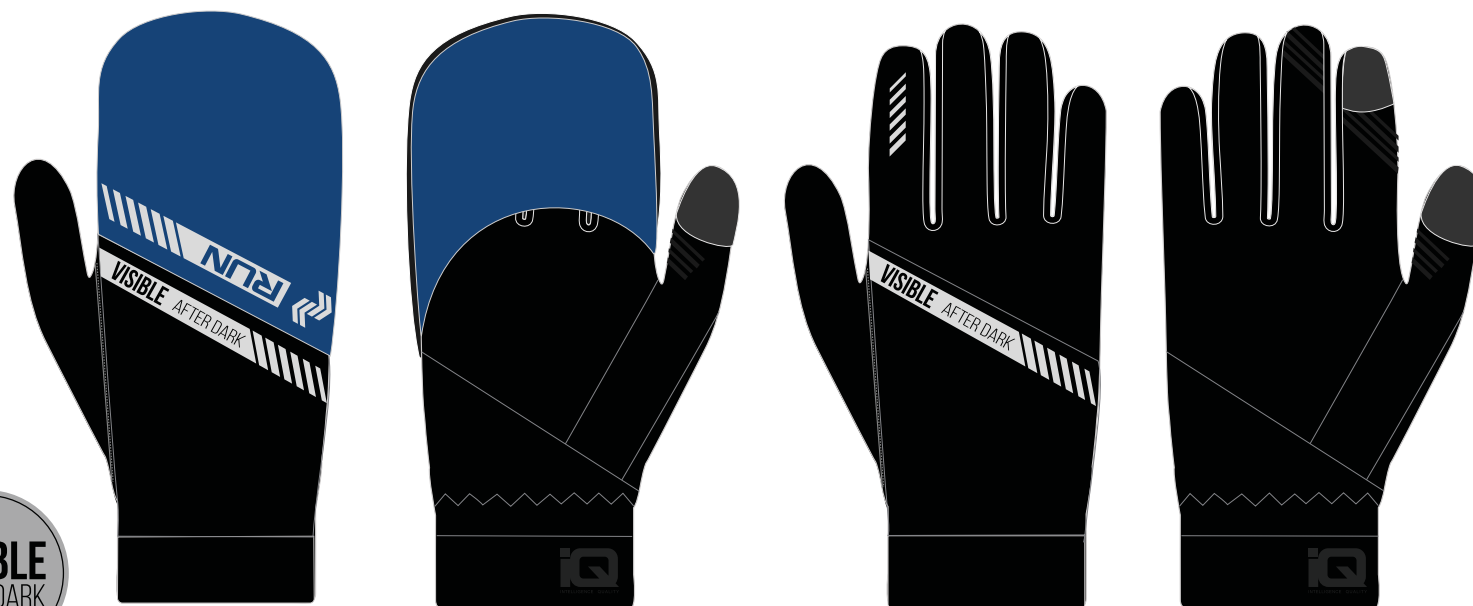
NUSA II RUNNING GLOVES

SIZE: S/M, L/XL

MATERIAL COMPOSITION:
95% POLYESTER, 5% ELASTANE

SPECIFICATION:

- WIND PROOF
- MICROFLEECE LINED
- VISIBLE AFTER DARK
- TOUCHSCREEN-FRIENDLY



BLACK/MONACO BLUE

NUSA II WMNS RUNNING GLOVES

SIZE: S/M, L/XL

MATERIAL COMPOSITION:
95% POLYESTER, 5% ELASTANE

SPECIFICATION:

- WIND PROOF
- MICROFLEECE LINED
- VISIBLE AFTER DARK
- TOUCHSCREEN-FRIENDLY



BLACK/REFLECTIVE

NUSA WMNS RUNNING GLOVES

SIZE: S/M, L/XL

MATERIAL COMPOSITION:
95% POLYESTER, 5% ELASTANE

- SPECIFICATION:
- WIND PROOF
 - MICROFLEECE LINED
 - VISIBLE AFTER DARK
 - TOUCHSCREEN-FRIENDLY



BLACK/PARADISE PINK

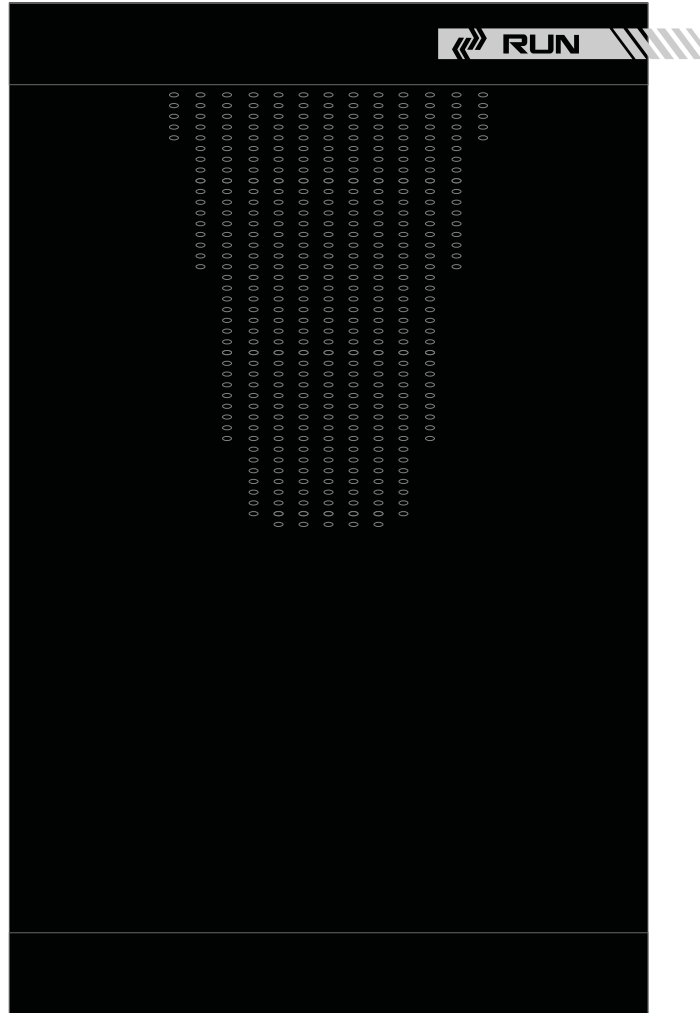


BEVIN RUNNING NECKWARMER

SIZE: ONE SIZE

MATERIAL COMPOSITION:
92% NYLON, 8% ELASTANE

SPECIFICATION:
- SEAMLESS



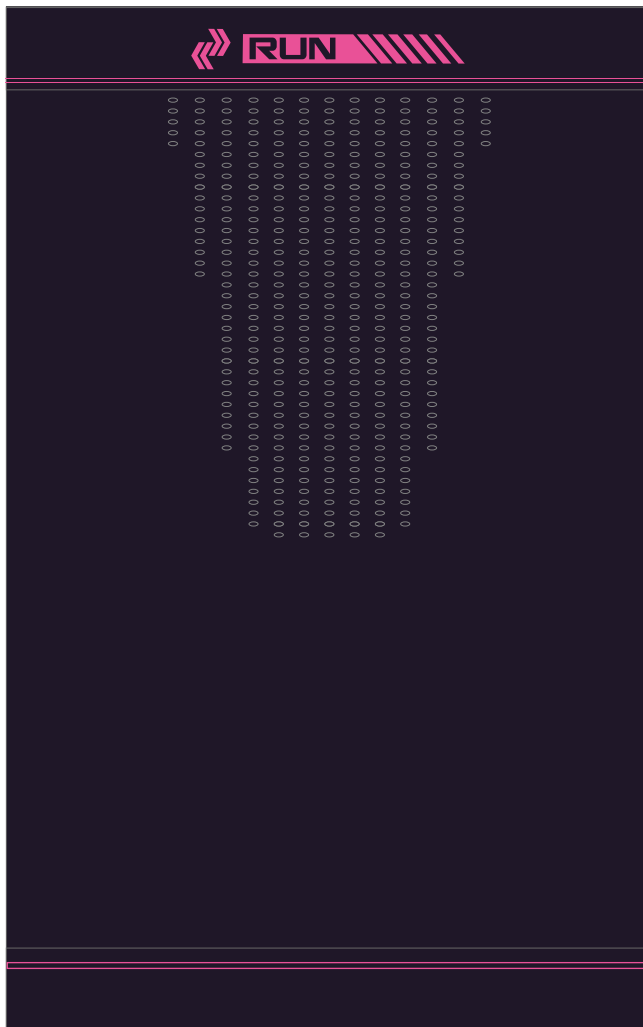
BLACK

BEVIN WMNS RUNNING NECKWARMER

SIZE: ONE SIZE

MATERIAL COMPOSITION:
92% NYLON, 8% ELASTANE

SPECIFICATION:
- SEAMLESS



NIGHTSHADE/CARMINE ROSE

 **DEVIN** RUNNING HAT

SIZE: ONE SIZE

MATERIAL COMPOSITION:
92% NYLON, 8% ELASTANE

SPECIFICATION:
- SEAMLESS



BLACK



 **DEVIN WMNS** RUNNING HAT

SIZE: ONE SIZE

MATERIAL COMPOSITION:
92% NYLON, 8% ELASTANE

SPECIFICATION:
- SEAMLESS



NIGHTSHADE/CARMINE ROSE

SIZES: 39-42, 43-46

MATERIAL COMPOSITION:
98% POLYAMID, 2% ELASTANE

ADDITIONAL:
SILVER IONS
ANTIBACTERIAL
ANTIFUNGAL
2PACK



BLACK



GARAF PACK WMNS SOCKS

SIZES: 35-38, 39-42

MATERIAL COMPOSITION:
98% POLYAMID, 2% ELASTANE

ADDITIONAL:
SILVER IONS
ANTIBACTERIAL
ANTIFUNGAL
2PACK



CIPOLLA/BLACK



BLACK



ARICO RUNNING SOCKS

SIZES: 35-38; 39-42; 43-46

MATERIAL COMPOSITION:
65% POLYAMIDE, 20% POLYESTER,
10% POLIPROPYLEN, 5% ELASTANE

ADDITIONAL:
REFLECTIVE ELEMENTS
ANTIBACTERIAL
ODOR REDUCTION
HIGH PERFORMANCE
EFFECTIVE HEAT BALANCE
MOISTURE MANAGEMENT



WHITE/GREY/MONACO BLUE

MOGRUN RUNNING SOCKS

SIZES: 35-38; 39-42; 43-46

MATERIAL COMPOSITION:
50% POLYAMIDE, 35% POLIPROPYLEN,
10% POLYESTER, 5% ELASTANE

ADDITIONAL:
ANTIBACTERIAL
ODOR REDUCTION
HIGH PERFORMANCE
EFFECTIVE HEAT BALANCE
MOISTURE MANAGEMENT



BLACK/FROST GREY



 **SALENI WMNS SOCKS**

SIZES: 28-32, 33-35

MATERIAL COMPOSITION:
70% COTTON, 25% POLYAMIDE, 5% ELASTANE

ADDITIONAL:
NON-SLIP



BLACK

PINGO JR SOCKS

SIZES: 35-38, 39-42

MATERIAL COMPOSITION:
70% COTTON, 25% POLYAMIDE, 5% ELASTANE

ADDITIONAL:
NON-SLIP



BLACK



GREY

 **MAILI WMNS** YOGA SOCKS

SIZES: 35-38, 39-42

MATERIAL COMPOSITION:
78% COTTON, 20% POLYESTER, 2% ELASTANE

ADDITIONAL:
NON-SLIP



BLACK



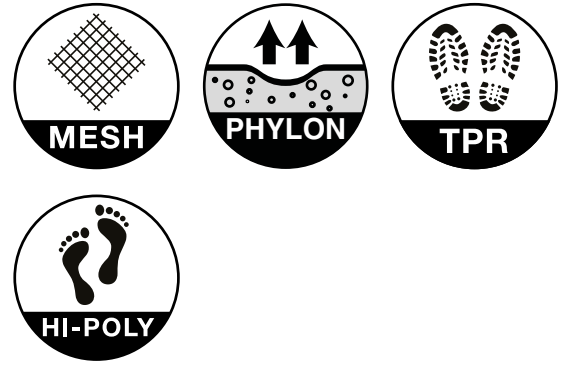
MELLOW MAUVE

TAWER TRAIL SHOES

SIZE: 41-46

MATERIAL COMPOSITION:
UPPER: MESH + PU
LINING: MESH
INSOLE: MESH, PU FOAM
OUTSOLE: EVA PHYLON, TPR RUBBER

SPECIFICATION:
HI-POLY INSOLE



POSEIDON/EXUBERANCE



NEW PRODUCT

TREWO TRAIL SHOES

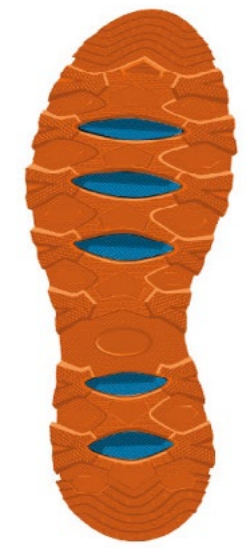
SIZE: 41-46

MATERIAL COMPOSITION:
 UPPER: TEXTILE + TPU
 LINING: MESH
 INSOLE: MESH, PU FOAM
 OUTSOLE: EVA PHYLON, RB RUBBER

- SPECIFICATION:
- HI-POLY INSOLE
 - QUICKLACE
 - LACE POCKET
 - ADDITIONAL REGULAR LACES
 - DROP: 9,5 mm
 - WEIGHT OF ONE SHOE (42): 360g



BLUE JEWEL/EXUBERANCE



REGOR SHOES

FOOTWEAR LINE

NEW PRODUCT

SIZE: 41-46

MATERIAL COMPOSITION:

UPPER: JACQUARD MESH + TPU

LINING: TEXTILE

OUTSOLE: MD + RB

SPECIFICATION:

- HI-POLY INSOLE

- DROP:

- WEIGHT OF ONE SHOE (41) 330g



TBA

SIZE: 41-46

MATERIAL COMPOSITION:

UPPER: MESH

LINING: MESH

INSOLE: MESH, PU FOAM

OUTSOLE: EVA PHYLON + RB

SPECIFICATION

- HI-POLY INSOLE

- DROP: 10

- WEIGHT OF ONE SHOE (41) 270g



WHITE/MONACO BLUE



SIZE: 41-46

MATERIAL COMPOSITION:

NEW PRODUCT



MOONLIT OCEAN/SULPHUR SPRING



SIZE: 41-46

MATERIAL COMPOSITION:

UPPER: MESH

LINING: MESH

INSOLE: MESH, PU FOAM

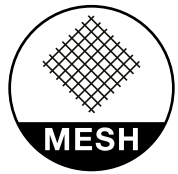
OUTSOLE: EVA PHYLON, TPR RUBBER

SPECIFICATION:

- HI-POLY INSOLE

- DROP: 10 MM

- WEIGHT OF ONE SHOE (41) 275g



MID GREY/DARK GREY/LIME



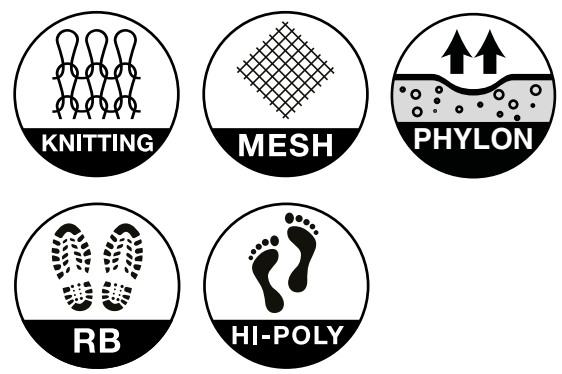
NEW PRODUCT

TORSMO SPORT SHOES

SIZE: 41-46

MATERIAL COMPOSITION:
UPPER: KNITTING
LINING: MESH
INSOLE: MESH, PU FOAM
OUTSOLE: EVA PHYLON, RB RUBBER

SPECIFICATION:
- HI-POLY INSOLE



BLUE OPAL/FIERY RED



DENALI SPORT SHOES

SIZE: 41-46

MATERIAL COMPOSITION:
UPPER: MESH, TPU
LINING: MESH
INSOLE: MESH, PU
OUTSOLE: EVA PHYLON



BLACK

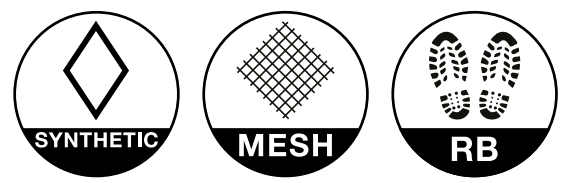


NEW PRODUCT

MARIL SPORT SHOES

SIZE: 41-46

MATERIAL COMPOSITION:
UPPER: FLY KNIT + TPU + NO SEW
LINING: MESH
INSOLE: EVA + MESH
OUTSOLE: MD + RB



BLACK BEAUTY/PORT ROYALE

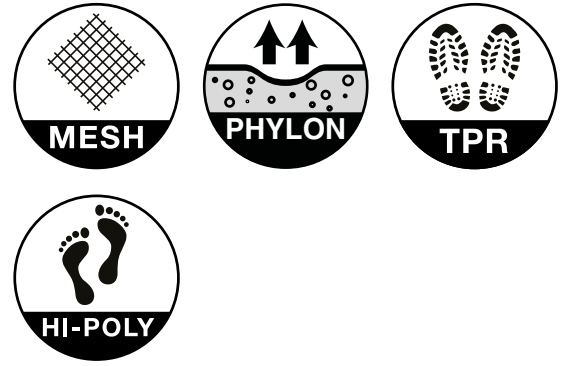


TOWER WMNS SPORT SHOES

SIZE: 36-41

MATERIAL COMPOSITION:
UPPER: MESH + PU
LINING: MESH
INSOLE: MESH, PU FOAM
OUTSOLE: EVA PHYLON, TPR RUBBER

SPECIFICATION:
HI-POLY INSOLE



DARK PURPLE/FESTIVAL FUCHSIA/BROOK GREEN



NEW PRODUCT

TREWO WMNS SPORT SHOES

SIZE: 36-41

MATERIAL COMPOSITION:
 UPPER: TEXTILE + TPU
 LINING: MESH
 INSOLE: MESH, PU FOAM
 OUTSOLE: EVA PHYLON, RB RUBBER

- SPECIFICATION:
- HI-POLY INSOLE
 - QUICKLACE
 - LACE POCKET
 - ADDITIONAL REGULAR LACES
 - DROP: 9,5 mm
 - WEIGHT OF ONE SHOE (42): 360g



DARK PURPLE/FESTIVAL FUCHSIA/BROOK GREEN



REGOR WMNS SPORT SHOES

NEW PRODUCT

SIZE: 36-41

MATERIAL COMPOSITION:
UPPER: JACQUARD MESH + TPU
LINING: TEXTILE
OUTSOLE: MD + RB

SPECIFICATION:
- HI-POLY INSOLE
- DROP:
- WEIGHT OF ONE SHOE (37) 270g



TBA

MAHELE WMNS SPORT SHOES

SIZE: 36-41

MATERIAL COMPOSITION:

UPPER: MESH

LINING: MESH

INSOLE: MESH, PU FOAM

OUTSOLE: EVA PHYLON + RB

SPECIFICATION:

- HI-POLY INSOLE

- DROP: 10

- WEIGHT OF ONE SHOE (37): 220g



WHITE/NIGHTSHADE



NEW PRODUCT

ORDEBE WO'S SPORT SHOES

SIZE: 36-41

MATERIAL COMPOSITION:

UPPER: TEXTILE

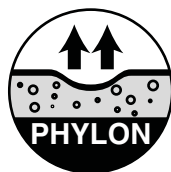
LINING: MESH

INSOLE: MESH, PU FOAM

OUTSOLE: EVA PHYLON

SPECIFICATION:

- HI-POLY INSOLE



BLACK/DARK GREY

NEW PRODUCT

TORSMO WMNS TRAINING SHOES

MATERIAL COMPOSITION:
UPPER: KNITTING
LINING: MESH
INSOLE: MESH, PU FOAM
OUTSOLE: EVA PHYLON, RB RUBBER

SPECIFICATION:
- HI-POLY INSOLE



DEEP TEAL/CARMINE ROSE

Four circular icons representing shoe features. The first icon shows a grid pattern labeled 'MESH'. The second icon shows two upward arrows above a wavy line with bubbles, labeled 'PHYLON'. The third icon shows a footprint with a textured sole, labeled 'RB'. The fourth icon shows a footprint with a smooth sole, labeled 'HI-POLY'.



SALEA WMNS SPORT SHOES

SIZE: 36-41

MATERIAL COMPOSITION:

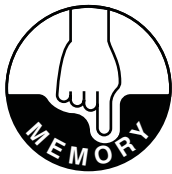
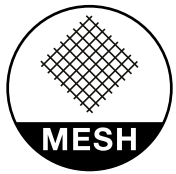
UPPER: 100% MESH

LINING: MESH

INSOLE: MESH, MEMORY FOAM

OUTSOLE: MD

ADDITIONAL:



BLACK/MELOW MAUVE



MIDNIGHT NAVY/GOBLIN BLUE

NEW PRODUCT

MARIL WMNS SPORT SHOES

SIZE: 36-41

MATERIAL COMPOSITION:
UPPER: FLY KNIT + TPU + NO SEW
LINING: MESH
INSOLE: EVA + MESH
OUTSOLE: MD + RB

NEW PRODUCT



MIDNIGHT NAVY/MELLOW MAUVE



RAMPIS T SPORT SHOES

SIZE: 36-40

MATERIAL COMPOSITION:

UPPER: 90% MESH, 10% TPU

LINING: MESH

INSOLE: MESH, PU FOAM

OUTSOLE: EVA PHYLON, TPR RUBBER

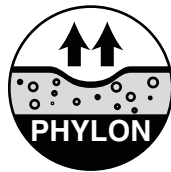
ADDITIONAL:

HI-POLY INSOLE

REFLECTIVE ELEMENTS



NAVY/TILE BLUE/LIME



RAMPIS JRG SPORT SHOES

SIZE: 28-35

MATERIAL COMPOSITION:

UPPER: 90%MESH+10%TPU

LINING: MESH

INSOLE: MESH, PU FOAM

OUTSOLE: EVA PHYLON, TPR RUBBER

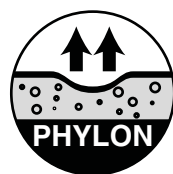
ADDITIONAL:

HI-POLY INSOLE

REFLECTIVE ELEMENTS



PINK/BEIGE



RAMPIS JR SPORT SHOES

SIZE: 28-35

MATERIAL COMPOSITION:

UPPER: 90%MESH+10%TPU

LINING: MESH

INSOLE: MESH, PU FOAM

OUTSOLE: EVA PHYLON, TPR RUBBER

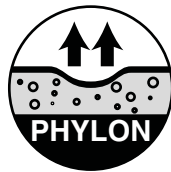
ADDITIONAL:

HI-POLY INSOLE

REFLECTIVE ELEMENTS



DEEP TEAL/ACID LIME



 **SALEA JRG** SPORT SHOES

SIZE: 30-35

MATERIAL COMPOSITION:

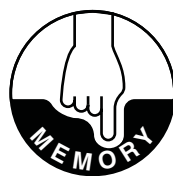
UPPER: MESH, PU

LINING: MESH

INSOLE: MESH, MEMORY FOAM

OUTSOLE: MD

ADDITIONAL:



BLACK/MELLOW MAUVE

LACE REGULAR LACES

SIZE: 75, 90, 120 cm

MATERIAL:
POLYESTER FIBRE, TPU



FLUO PINK



FLUO YELLOW



DARK GREY

LACE RAINBOW LACES

FOOTWEAR
ACCESSORIES

SIZE: 75, 90, 120 cm

MATERIAL:
POLYESTER FIBRE, TPU



MULTICOLOR

LACE RUNWAY LACES

SIZE: 75 cm

MATERIAL:
POLYESTER FIBRE, RUBBER, TPU



BLACK

CLEVER FOAM INSOLE INSOLE

SIZE: 36-37, 38-40, 41-42, 43-44, 45-46

MATERIAL:
TEXTILE, MEMORY FOAM, PU

SPECIFICATION:
- MEMORY FOAM



DARK NAVY / YELLOW

INSOLE ACTION INSOLE

SIZE: 36-37, 38-40, 41-42, 43-44, 45-46

MATERIAL:
TEXTILE, PU



BLACK / GREEN

LAOS TOWEL

SIZE: 90 x 30 cm

MATERIAL COMPOSITION:
85% POLYESTER, 15% POLYAMIDE

SPECIFICATION:
- QUICKDRY
- PACKED INTO A COVER



MINT



NAVY



RANDE TOWEL

SIZE: 70 x 40 cm

MATERIAL COMPOSITION:
100% COTTON



MELLOW MAUVE



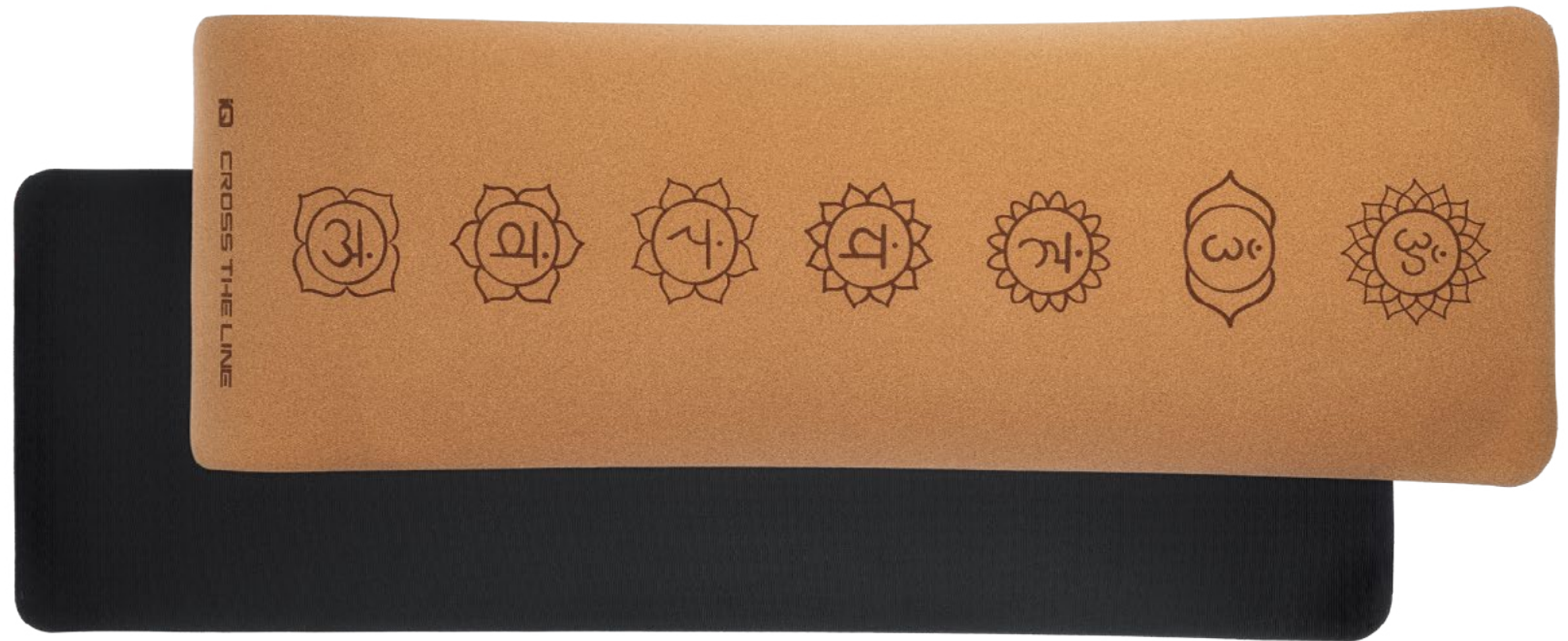
MOONLIT OCEAN



NAMASTE MAT NAMASTE

SIZE: 183 x 61 x 0,3 cm

MATERIAL COMPOSITION:
CORK, TPE



BEIGE



NAMASTE ROLLER NAMASTE

WEIGHT: 0,86 kg

SIZE: 30 x 10 cm

MATERIAL COMPOSITION:
CORK



BEIGE



NAMASTE BRICK NAMASTE

WEIGHT: 0,77 kg

SIZE: 22 x 15 x 7 cm

MATERIAL COMPOSITION:
CORK



BEIGE



NAMASTE STRAP YOGA STRAP

WEIGHT: 122 g

SIZE: 250 x 3,8 cm

MATERIAL COMPOSITION:
POLYESTER, STEEL



BEIGE



SEA TURTLE



PROBALANCE MAT MAT

WEIGHT: 2 kg

SIZE: 183 x 61 x 0,3 cm

MATERIAL COMPOSITION: PU, RUBBER



MELLOW MAUVE



PROBALANCE ROLLER ROLLER

FITNESS
ACCESSORIES

WEIGHT: 0,55 kg

SIZE: 60 x 15 cm

MATERIAL COMPOSITION: EPE



ANTHRACITE/MELLOW MAUVE

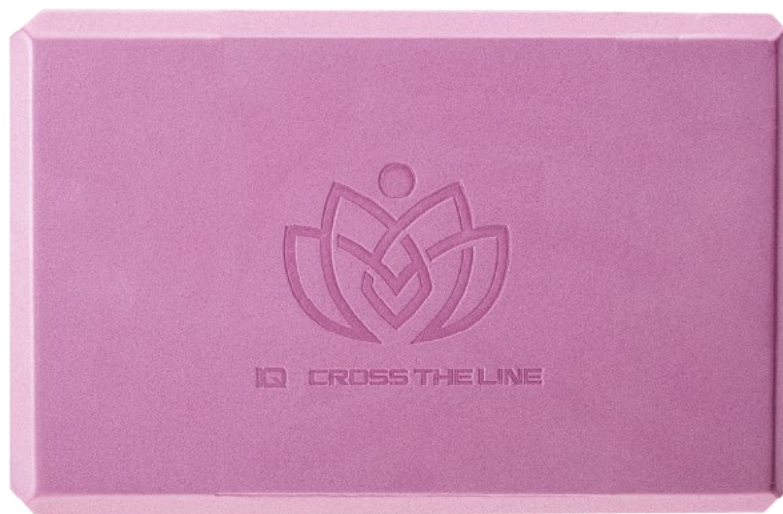


PROBALANCE BRICK BRICK

WEIGHT: 0,12 kg

SIZE: 22 x 15 x 7 cm

MATERIAL COMPOSITION: EVA



MELLOW MAUVE



 **POWERPUMP ADROIT** POWERPUMP

WEIGHT: 0,18 kg

SIZE:

LENGTH: 16 cm

ROPE: 0,5 x 275 cm

MATERIAL COMPOSITION:

PP, PVC, STEEL

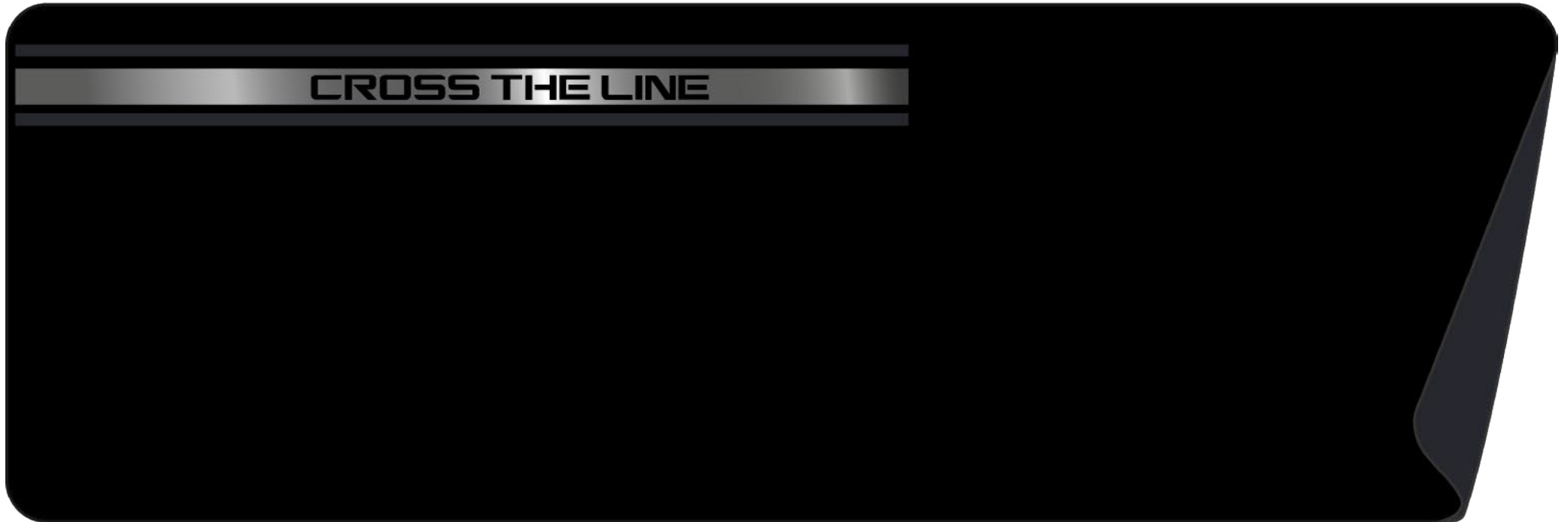


ANTHRACITE/PALE MAUVE

 **POWERPUMP MATEVA** POWERPUMP

SIZE: ONE SIZE

MATERIAL COMPOSITION:



BLACK/SILVER

POWERPUMP WHEEL POWERPUMP

WEIGHT: 0,61 kg

SIZE:

LENGTH: 29 cm

DIAMETER: 18 cm

MATERIAL COMPOSITION:

PP, STEEL, FOAM



BLACK/SILVER



POWERPUMP WEIGHTS WEIGHTS

WEIGHT: 0,5 kg x 2

SIZE: 24 x 11,5 cm

MATERIAL COMPOSITION: NEOPRENE, IRON SAND



BLACK/SILVER

0,5 kg

1 kg

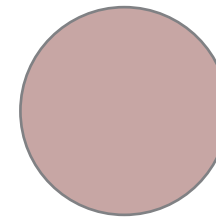
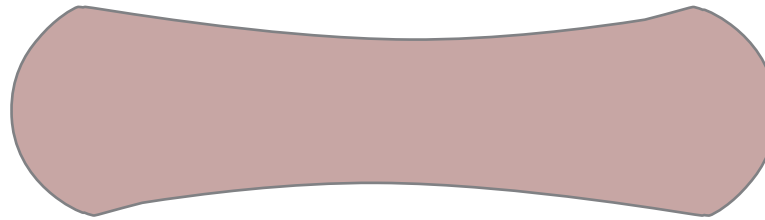
1,5 kg

2 kg

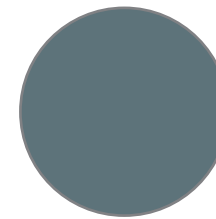
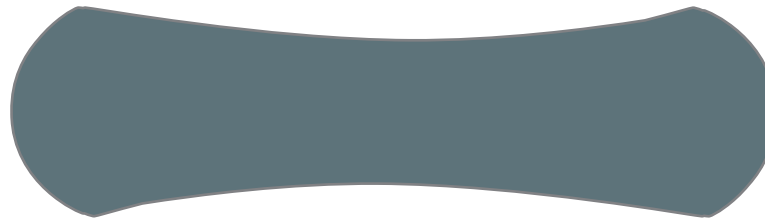
 **NIDLO** DUMBBELL

WEIGHT: 0,5 kg, 1 kg, 2kg, 3 kg

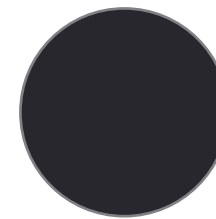
MATERIAL COMPOSITION:
NEOPRENE, IRON



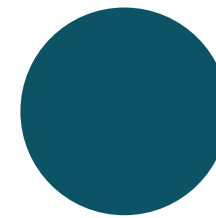
PALE MAUVE
0,5 kg



GOBLIN BLUE
1 kg



ANTHRACITE
2 kg

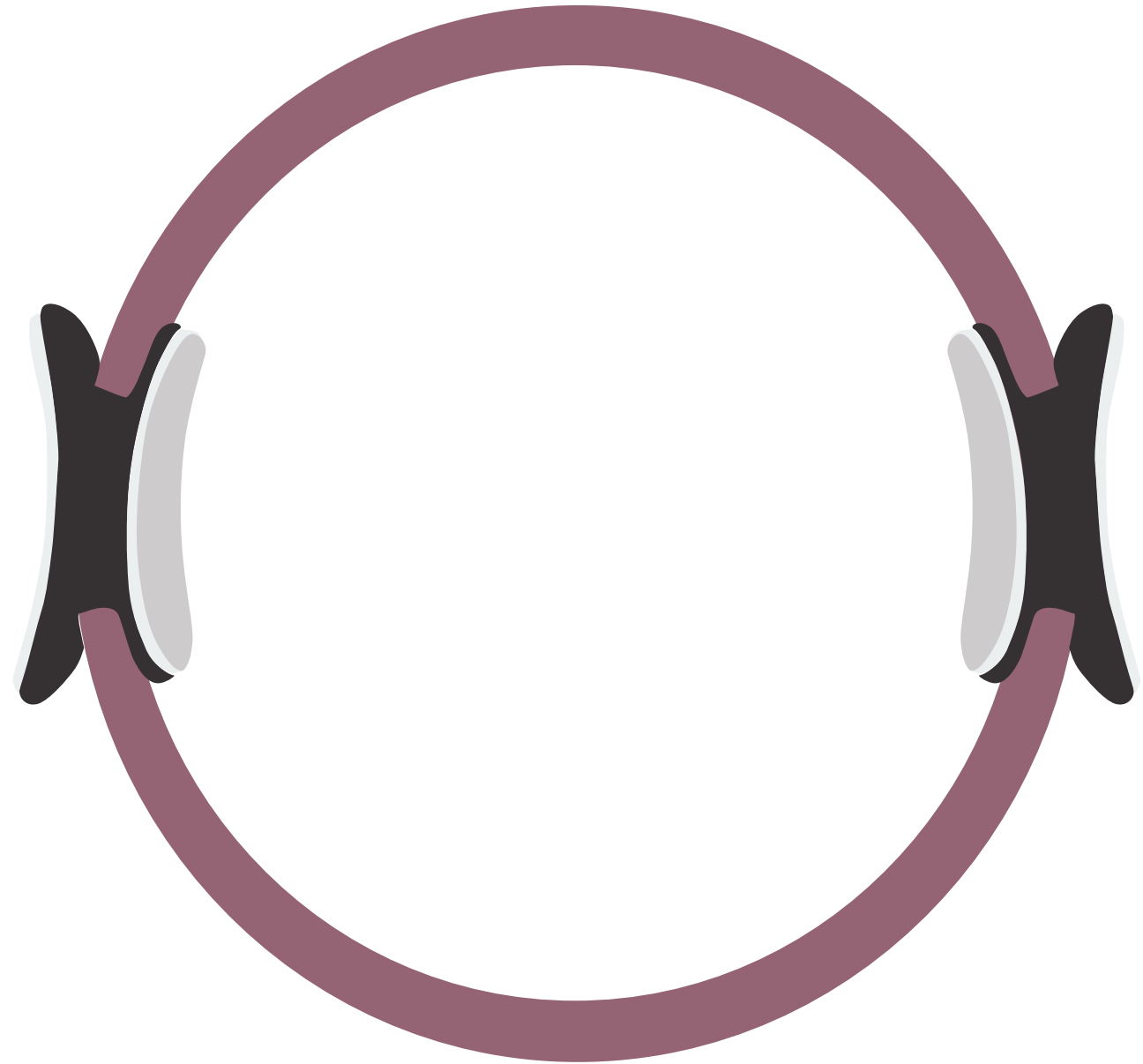


DEEP LAGOON
3 kg

 **PILLOR** EXPANDER

SIZE: Ø 38 cm

MATERIAL COMPOSITION:
RUBBER, FRP, EVA

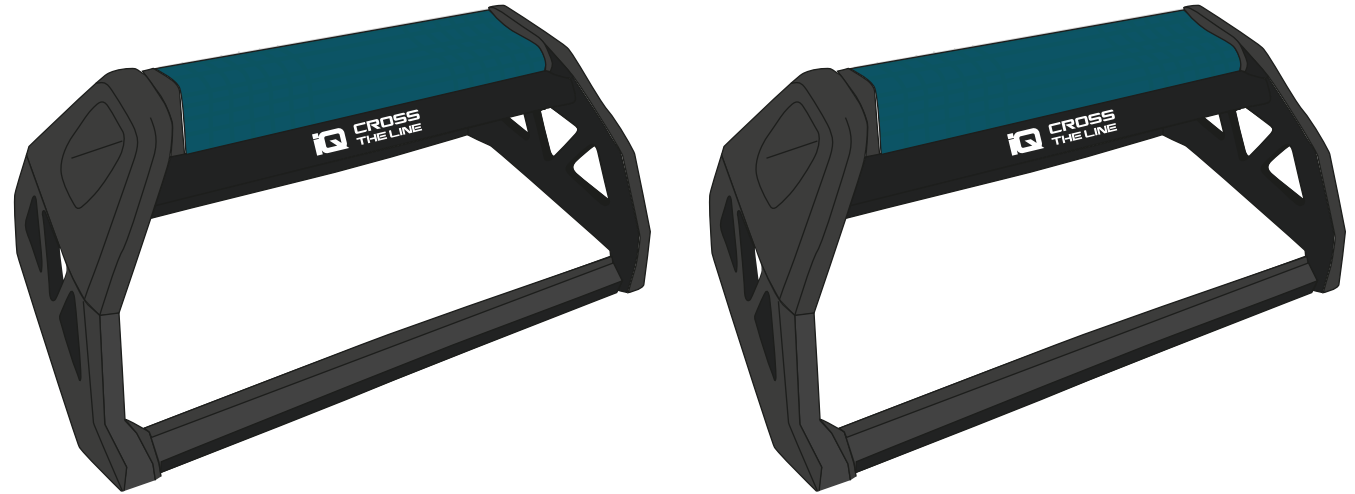


MELLOW MAUVE

NOBA PUSH-UP BARS

SIZE: 19 x 11 x 7,8 cm

MATERIAL COMPOSITION:
PP, TPR



BLACK/DEEP LAGOON

KANAQ HAND GRIP

SIZE: UNIVERSAL

MATERIAL COMPOSITION:
ABS, STEEL



LIME PUNCH/MAGNET

 **ROLLO** MASSAGE BALL

SIZE: Ø 6,5 cm

MATERIAL COMPOSITION:
TPR



RED



BLACK

 **ROLIS** PEANUT MASSAGE BALL

SIZE: Ø 6,5 cm x 12,5 cm

MATERIAL COMPOSITION:
TPR



LIME PUNCH



BLACK

 **ROLLY** PEANUT MASSAGE BALL

SIZE: Ø 12 cm x 24 cm

MATERIAL COMPOSITION:
EPP



BLACK

PROJUMP JUMP ROPE

FITNESS
ACCESSORIES

SIZE: 300 cm

MATERIAL COMPOSITION:
PP, STEEL



BLACK/SILVER

EMORI RESISTANCE BANDS SET

THREE LEVELS OF SIZE AND RESISTENCE:

- LIGHT: 500 x 50 x 0,4mm (4,5kg)
- MEDIUM: 500 x 50 x 0,7mm (9,1kg)
- HEAVY: 500 x 50 x 0,9mm (13,6kg)

MATERIAL COMPOSITION: 100% LATEX



POTENT/LIME/MOONLIT

HIMORI ELASTIC BAND

SIZE:

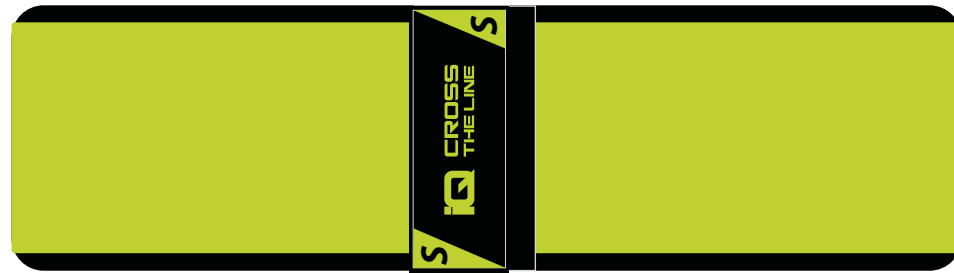
S: 42 x 8 cm

M: 37 x 8 cm

L: 32 x 8 cm

MATERIAL COMPOSITION:

POLYESTER, LATEX



LIME PUNCH S



DEEP LAGOON M



MONACO BLUE L

X WOODLANCE BALANCE PLATFORM

SIZE:

FITNESS
ACCESSORIES

NEW PRODUCT



BLACK/WOOD



X WOODLANCE PRO BALANCE PLATFORM

FITNESS
ACCESSORIES

NEW PRODUCT

SIZE:



BLACK/WOOD



 **PROYOGA** YOGA MAT

SIZE: 173 x 60 x 0,4 cm

MATERIAL COMPOSITION:
TPE



GREY PINSTRIPE/ROUGE RED



 **MATEVA** YOGA MAT

SIZE: 180 x 60 x 0,6 cm

MATERIAL COMPOSITION:
NEOPRENE, EVA



BLACK/BLUE ATOLL

ROLLERS ROLLER

SIZE: 60 x 15 cm

MATERIAL COMPOSITION:
EPE

FITNESS
ACCESSORIES



BLACK/SULPHUR SPRING

 **VOLLO** AB ROLLER

SIZE: Ø 19 cm

MATERIAL COMPOSITION:
FOAM, PP, STEEL



BLACK/BLUE ATOLL

CROSSPRO JUMP ROPE

SIZE: 3 M X 0,3 CM

MATERIAL COMPOSITION:
GRIP: STEEL
CABLE: STEEL



BLUE ATOLL

IRONFIST HAND GRIP

MATERIAL COMPOSITION:
GRIP: ALLUMINIUM
SPRING: STEEL



BLUE ATOLL

NEW PRODUCT

KAHI WATER BOTTLE

CAPACITY: 600 ml

MATERIAL COMPOSITION:

BODY: COPOLYESTER

LID: PP, SILICONE,

STRAP: POLYESTER

SPECIFICATION:

- COPOLYESTER

- ANTI-LEAK

- BPA FREE



LIME PUNCH



POTENT PURPLE



MOONLIT OCEAN

TARRO WATER BOTTLE

COMBAT SPORTS
ACCESSORIES

NEW PRODUCT



BLACK/RED

SUMBER WATER BOTTLE

CAPACITY: 400 ml

MATERIAL COMPOSITION:

CAP: PP

BODY: TRITAN

STRAP: POLYESTER

SPECIFICATION:

- BPA FREE



LEGION BLUE/SHARP GREEN



BLACK/RED

TRITO WATER BOTTLE

SIZE: 750 ml

MATERIAL COMPOSITION:
PE-LD

SPECIFICATION:
- QUICK STOP



BLUE



GREEN



PINK

VIE WATER BOTTLE

CAPACITY: 720 ML

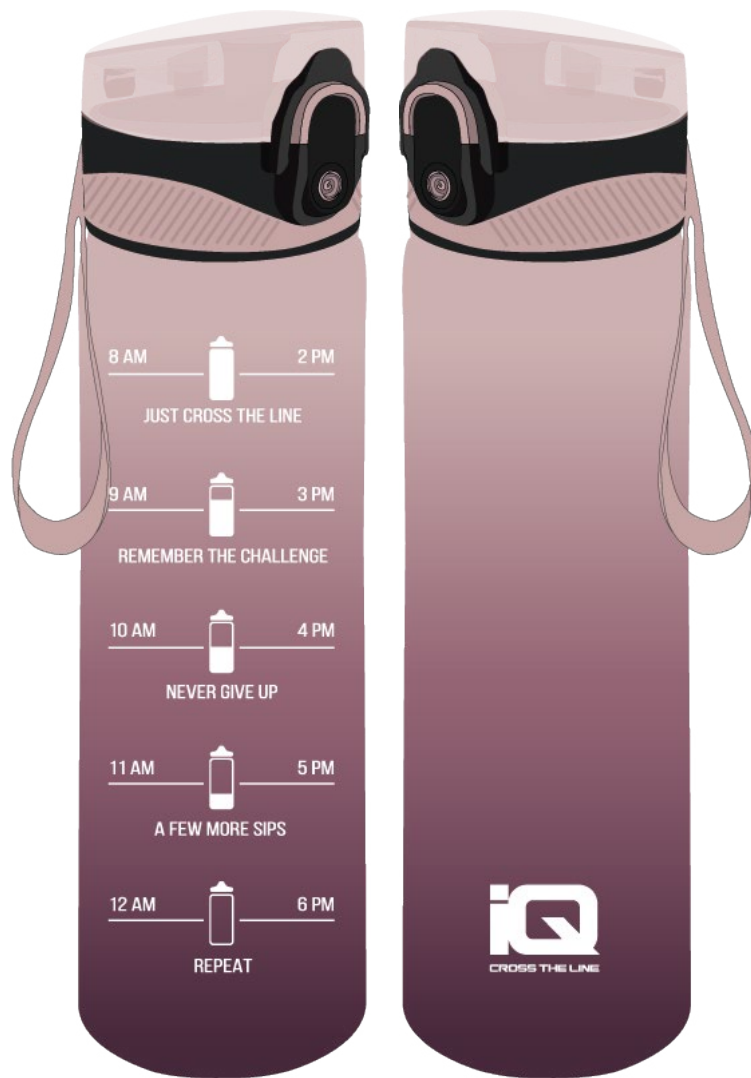
MATERIAL COMPOSITION:

BODY: TRITAN

CAP: PP

SEAL RING AND TOP: SILICONE

PULL: POLYESTER



PINK/VIOLET



BLUE/PINK

LAGO WATER BOTTLE

CAPACITY: 900 ml

MATERIAL COMPOSITION:

BODY: COPOLYESTER

CAP, INNER FILTER: PP, PS, SILICONE

SPECIFICATION:

- COPOLYESTER
- ANTI-LEAK
- BPA FREE



LIGHT PINK



WHITE/LIGHT GREY

BETA SHAKER

FITNESS
ACCESSORIES

CAPACITY: 500 ml

MATERIAL COMPOSITION:

CAP: PP + TPR

BODY: PP

INNER BALL: STAINLESS STEEL

SPECIFICATION:

- BPA FREE



PINK/DARK PINK

BUTTERCUP/BLACK

CYAN BLUE/BLACK

IQFLASK 250 RUNNING TRAIL SOFT FLASK

CAPACITY: 250 ML

MATERIAL COMPOSITION:
BODY: SILICONE
CUP: TPU, PP



TRANSPARENT BLUE

IQFLASK 500 RUNNING TRAIL SOFT FLASK

CAPACITY: 500 ML

MATERIAL COMPOSITION:
BODY: SILICONE
CUP: TPU, PP



TRANSPARENT BLUE

AGITA SHAKER

CAPACITY: 650 ml

MATERIAL COMPOSITION:

BODY: PP + TRITAN + PP

LID: PP + SILICONE

SPECIFICATION:

- BPA FREE



FITNESS
ACCESSORIES

NEW PRODUCT



MELLOW MAUVE



EBONY

TENSO SHAKER

CAPACITY: 700 ml

MATERIAL COMPOSITION:

CAP: PP

BODY: PP

INNER BALL: STAINLESS STEEL



GOBLIN BLUE

FITNESS
ACCESSORIES

NEW PRODUCT

NEW PRODUCT

YOGA BOTTLE 400ml BOTTLE

CAPACITY: 500 ml

MATERIAL COMPOSITION:

BODY: PP

CAP: PP

SPECIFICATION:

- BPA FREE



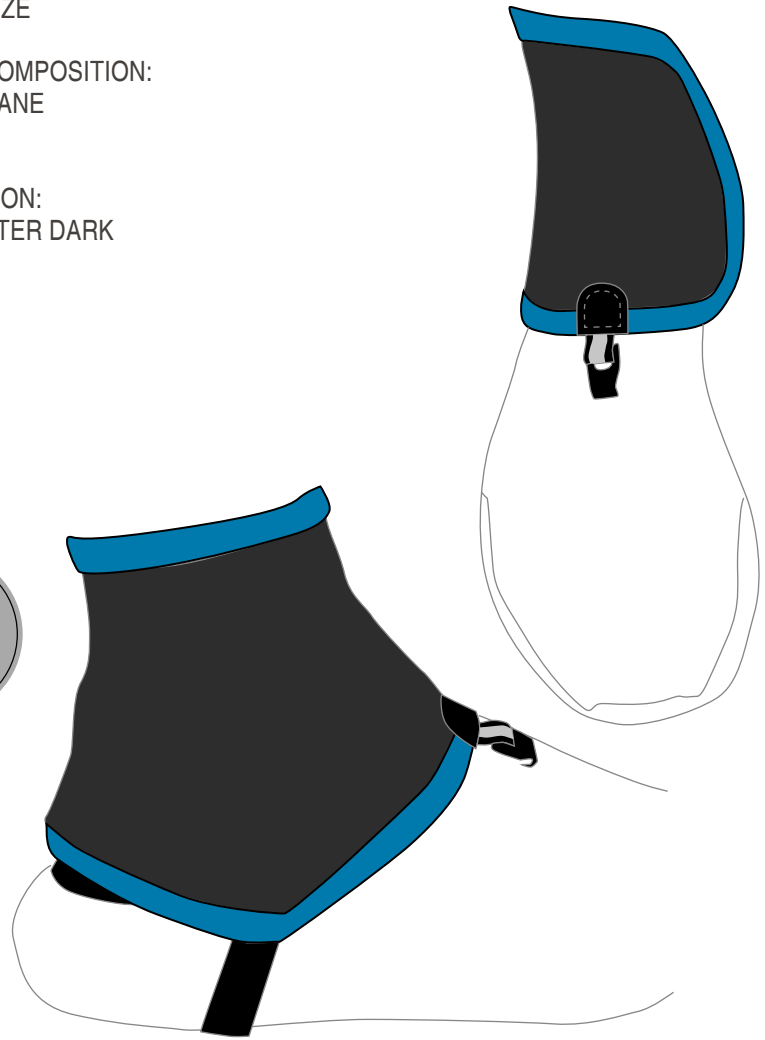
WHITE

DEGLI RUNNING TRAIL GAITERS

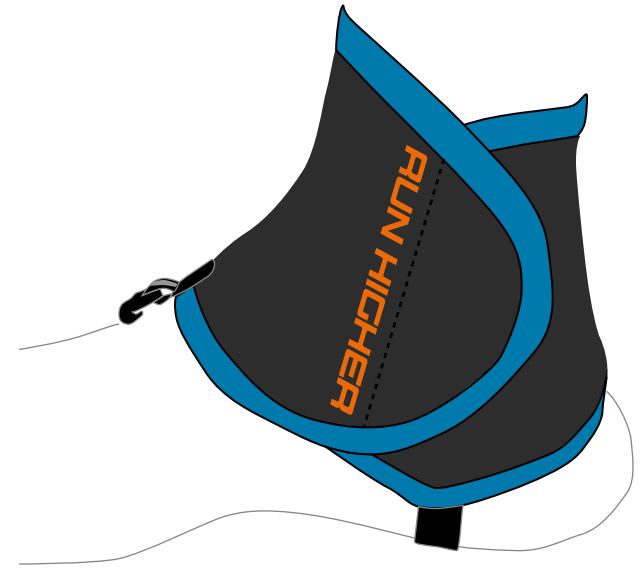
SIZE: ONE SIZE

MATERIAL COMPOSITION:
100% ELASTANE

SPECIFICATION:
- VISIBLE AFTER DARK



BLACK/EXUBERANCE



BLACK/BLUE JEWEL

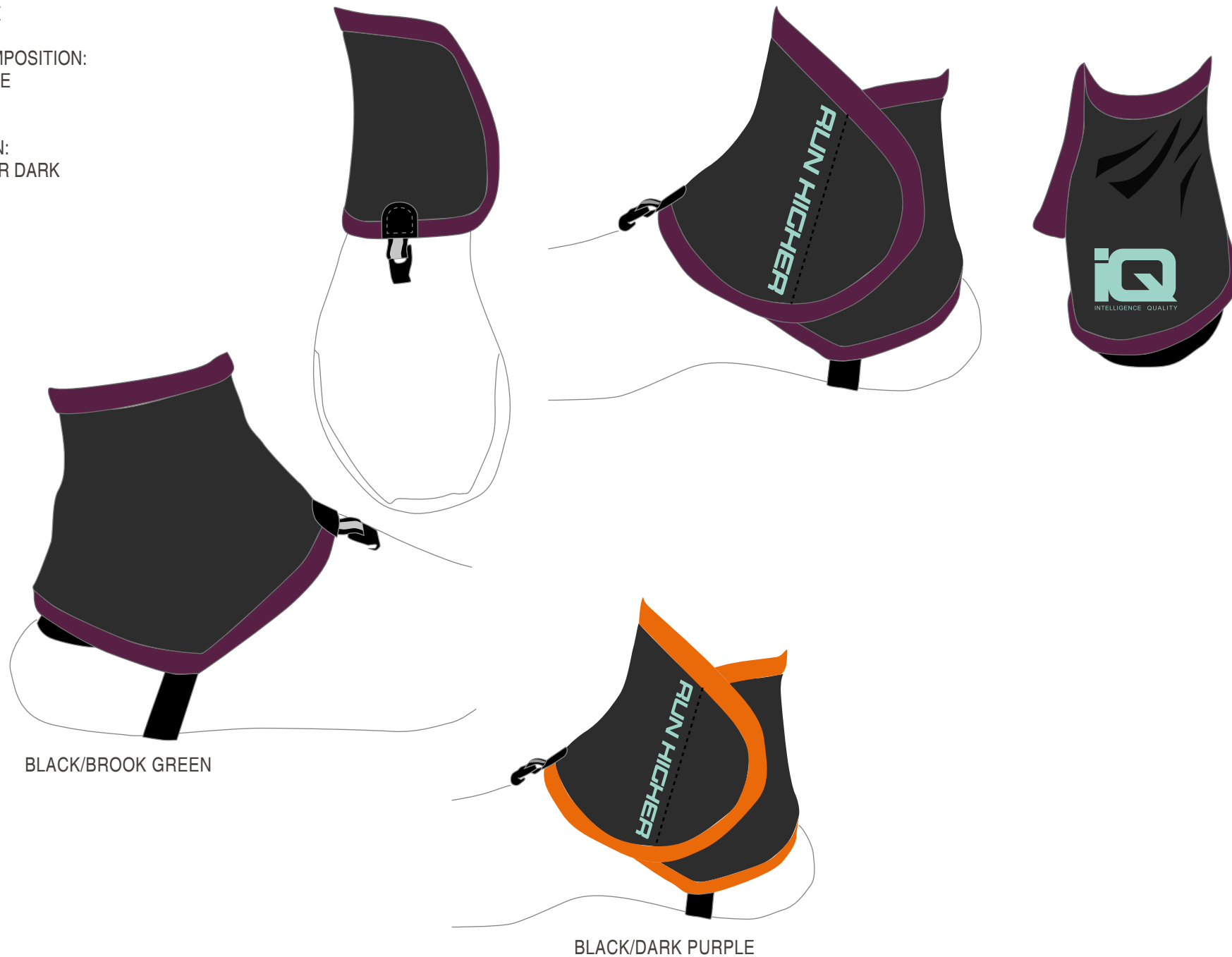


DEGLI WMNS RUNNING TRAIL GAITERS

SIZE: ONE SIZE

MATERIAL COMPOSITION:
100% ELASTANE

SPECIFICATION:
- VISIBLE AFTER DARK



BLACK/BROOK GREEN

BLACK/DARK PURPLE

BURIED II GLOVES

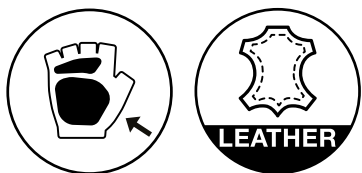
SIZE: M, L, XL

MATERIAL COMPOSITION:

60% LEATHER, 25% NYLON, 10% NEOPRENE,
5% ELASTANE

SPECIFICATION:

- SHOCK-ABSORBING PADS
- LEATHER



BLACK

BRIGHT II GLOVES

SIZE: M, L, XL

MATERIAL:

50% POLYESTER, 20% AMARA, 25% NYLON,
5% ELASTANE

SPECIFICATION:

- SHOCK-ABSORBING PADS
- LEATHER



BLACK/FIERY RED

 **CROSSI** CROSSFIT GLOVES

SIZE: M-XL

MATERIAL COMPOSITION: 60% NYLON,
30% PU, 10% ELASTANE



BLACK/REFLECTIVE PATTERN

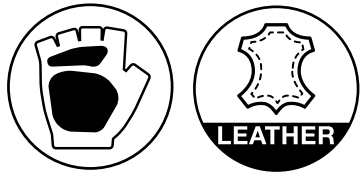
FAIRO GLOVES

SIZE: M, L, XL

MATERIAL COMPOSITION: 70% LEATHER,
20% NYLON, 10% ELASTANE

SPECIFICATION:

- SHOCK-ABSORBING PADS
- LEATHER



MEDIEVAL BLUE/RACING RED

SIZE: S-L

MATERIAL COMPOSITION: NYLON 60%, PU 30%,
ELASTAN 10%



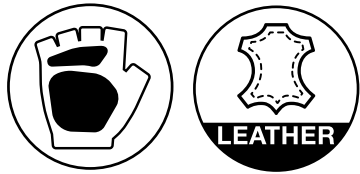
BLACK/LIME PUNCH

SIZE: M-XL

MATERIAL COMPOSITION: 40% LEATHER,
30% PU, 20% NYLON, 10% ELASTANE

SPECIFICATION:

- SHOCK-ABSORBING PADS
- LEATHER



ASPHALT/BLACK

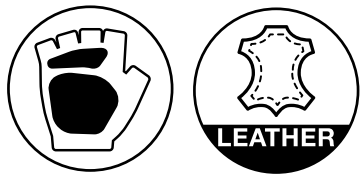
EMIO GLOVES

SIZE: M-XL

MATERIAL COMPOSITION: 40% POLYESTER,
40% NYLON, 15% LEATHER, 5% ELASTANE

SPECIFICATION:

- SHOCK-ABSORBING PADS
- LEATHER



SPICY ORANGE/MEDIEVAL BLUE

DEMON GLOVES

SIZE: S-L

MATERIAL COMPOSITION: NYLON 60%,
PU 30%, ELASTAN 10%



LIME PUNCH/BLACK

 **CROSSI WMNS** CROSSFIT GLOVES

SIZE: S-L

MATERIAL COMPOSITION: 60% NYLON,
30% PU, 10% ELASTANE



SEA TURTLE/CARMINE ROSE

FAIRO WMNS GLOVES

SIZE: S-L

MATERIAL COMPOSITION: 70% LEATHER,
20% NYLON, 10% ELASTANE

SPECIFICATION:

- SHOCK-ABSORBING PADS
- LEATHER



SEA TURTLE/CARMINE ROSE

VIENNA WMNS GLOVES

SIZE: S-L

MATERIAL COMPOSITION: 60% NYLON,
30% PU, 10% ELASTANE



FLUO PINK

WHISTER II WRISTWRAPS

SIZE: ONE SIZE

MATERIAL COMPOSITION:
60% COTTON, 20% POLYESTER, 20% ELASTAN

SPECIFICATION:



BLACK/BLUE ATOLL



POWER STRAPS LIFTING STRAPS

SIZE: ONE SIZE

FITNESS
ACCESSORIES

NEW PRODUCT



BLACK



TRICE II GLOVES

SIZE: S, M, L, XL

MATERIAL COMPOSITION:
80% POLYESTER, 10% NYLON, 10% ELASTAN

SPECIFICATION:



BLACK

TRICE GLOVES

SIZE: S, M, L, XL

MATERIAL COMPOSITION:
80% POLYESTER, 10% NYLON, 10% ELASTAN

SPECIFICATION:



BLACK

WHISTER WRISTWRAPS

SIZE: ONE SIZE

MATERIAL COMPOSITION:
60% COTTON, 20% POLYESTER, 20% ELASTAN

SPECIFICATION:



BLACK/BLUE ATOLL



BRIGHT GLOVES

SIZE: M, L, XL

MATERIAL:

50% POLYESTER, 20% AMARA, 25% NYLON,
5% ELASTANE

SPECIFICATION:

- SHOCK-ABSORBING PADS
- LEATHER



BLACK/FIERY RED

 **MILL** GLOVES

SIZE: XS, S, M

MATERIAL:
60% AMARA, 20% NYLON, 10% POLYESTER,
10% NEOPRENE

SPECIFICATION:
- SHOCK-ABSORBING PADS



BLACK/PINK YARROW/WHITE

MILL II GLOVES

SIZE: XS, S, M

MATERIAL:

60% AMARA, 20% NYLON, 10% POLYESTER,
10% NEOPRENE

SPECIFICATION:

- SHOCK-ABSORBING PADS



BLACK/PINK YARROW/WHITE

NEW PRODUCT

BOXEO BOXING GLOVES

SIZE: 10-oz, 12-oz, 14-oz

MATERIAL COMPOSITION:
UPPER: 90% PU, 10% NYLON
LINING: 100% POLIESTER
PADDING: 100% PU FOAM

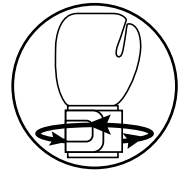
- SPECIFICATION:
- SHOCK-ABSORBING INJECTED FOAM
 - STABILIZING STRAPS
 - LOCKED THUMB
 - VENTILATION



BLACK/RED



BLACK/GOLD



BAVO BOXING GLOVES

SIZE: 10-oz, 12-oz, 14-oz

MATERIAL COMPOSITION:

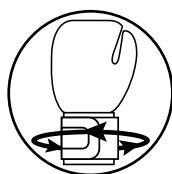
UPPER: 50%PU, 40%POLYESTER, 10%NYLON

LINING: 100% POLIESTER

PADDING: 100% PU FOAM

SPECIFICATION:

- SHOCK-ABSORBING INJECTED FOAM
- STABILIZING STRAPS
- LOCKED THUMB
- VENTILATION



BLACK/WHITE

MARTS MMA GLOVES

SIZE: S, M, L, XL

MATERIAL COMPOSITION:

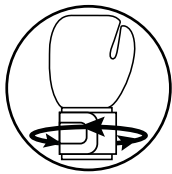
UPPER: 80% PU, 15% NYLON, 5% ELASTANE

LINING: 100% POLYESTER

PADDING: 50% EVA FOAM, 50% PU FOAM

SPECIFICATION:

- SHOCK-ABSORBING FOAM
- STABILIZING STRAPS
- VENTILATION



BLACK/WHITE

GOLPE FOCUS PADS

SIZE: ONE SIZE

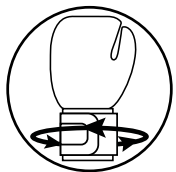
MATERIAL COMPOSITION:

SHELL: 75% PU, 20% POLYESTER, 5% NYLON

PADDING: 70% PU FOAM, 30% EVA FOAM

SPECIFICATION:

- STABILIZING STRAPS
- SHOCK-ABSORBING FOAM
- VENTILATION



BLACK

 **MAPARO** ELASTICATED SHIN GUARD

SIZE: S, M, L, XL

MATERIAL COMPOSITION:
SHELL: 60% POLYESTER, 40% ELASTANE
LINING: 100% POLYESTER
FILLING: 65% EVA FOAM, 35% PU FOAM



BLACK

AMPARO ELASTICATED SHIN INSTEP

COMBAT SPORTS
ACCESSORIES

SIZE: S, M, L, XL

MATERIAL COMPOSITION:
SHELL: 60% POLYESTER, 40% ELASTANE
LINING: 100% POLYESTER
FILLING: 65% EVA FOAM, 35% PU FOAM



BLACK/RED

VENDA 2,5 m HAND WRAPS

SIZE: 2,5m

MATERIAL COMPOSITION:
COTTON, POLIESTER

SPECIFICATION:
- THUMB LOOP



RED



BLACK

VENDA II 2,5 m HAND WRAPS

SIZE: 2,5m

MATERIAL COMPOSITION:
COTTON, POLIESTER

SPECIFICATION:
- THUMB LOOP



WHITE PATTERN/BLACK

COMBAT SPORTS
ACCESSORIES

NEW PRODUCT

VENDA II 4 m HAND WRAPS

SIZE: 4m

MATERIAL COMPOSITION:
50% COTTON
50% POLYESTER

SPECIFICATION:
- THUMB LOOP



RED PATTERN/BLACK

COMBAT SPORTS
ACCESSORIES

NEW PRODUCT

TRAILOX RUNNING TRAIL BACKPACK

SIZE: ONE SIZE

MATERIAL COMPOSITION:

NEW PRODUCT



BLACK/GREY

NEW PRODUCT

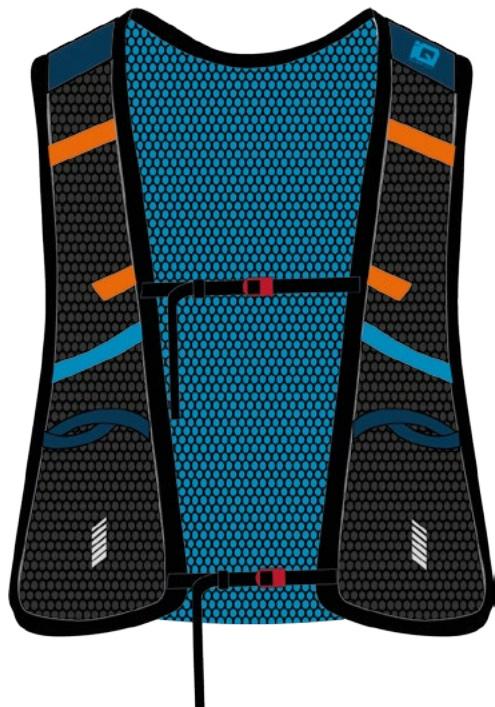
TRAILBEE 6 RUNNING TRAIL BACKPACK

SIZE: ONE SIZE

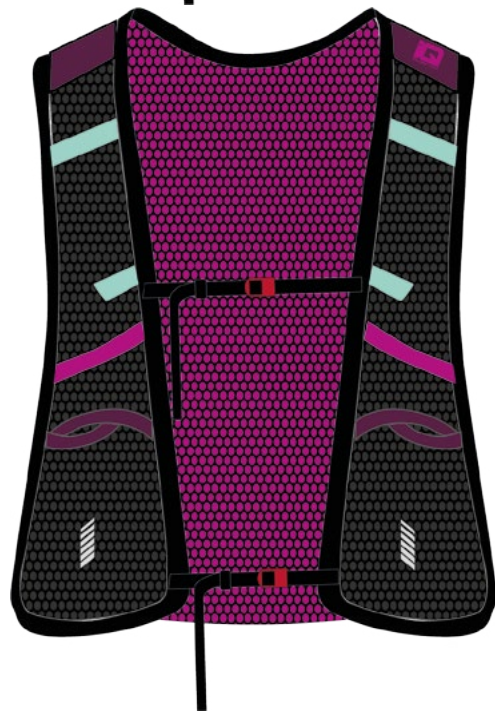
MATERIAL COMPOSITION:



POSEIDON/HAWAIIAN OCEAN



DARK PURPLE/FESTIVAL FUCHSIA



TRAILDOE RUNNING TRAIL VEST

SIZE: ONE SIZE

MATERIAL COMPOSITION:



NEW PRODUCT

NEW PRODUCT

TRAILRABBIT RUNNING TRAIL HIPBELT

SIZE: ONE SIZE

MATERIAL COMPOSITION:



POSEIDON/MYKONOS BLUE DOTS



BLACK TRIANGLES

ULTRARUNNER RUNNING BACKPACK

CAPACITY: 6 L

SIZE: 40 x 21 x 8 cm

WEIGHT:

MATERIAL COMPOSITION:
100% POLYESTER

SPECIFICATION:

- CARRYING SYSTEM
- ERGONOMIC BACK
- AIR EXIT SYSTEM
- WATERPROOF ZIPPER
- H2O SYSTEM
- WHISTLE
- REFLECTIVE ELEMENTS
- RIP STOP



BLACK/GREY/FLAME

IQFLASK HOLDER SOFT FLASK HOLDER

CAPACITY: SOFT FLASK 250ml

SIZE: ONE SIZE

SPECIFICATION:
REFLECTIVE ELEMENTS



BLACK/SPICY ORANGE PATTERN

NEW PRODUCT

RUNNING
ACCESSORIES

 **LEILA WMNS** FITNESS BAG

CAPACITY:

SIZE:

FITNESS
ACCESSORIES

NEW PRODUCT



PALE MAUVE



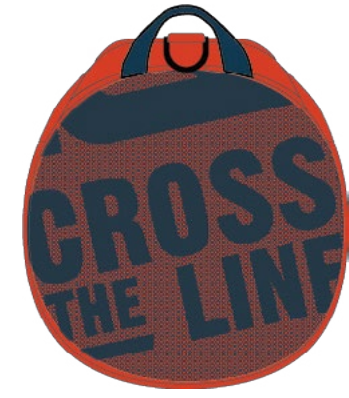
 **LIMITLESS** FITNESS BAG

CAPACITY:

SIZE:

FITNESS
ACCESSORIES

NEW PRODUCT



SPICY ORANGE/GIBRALTAR SEA



 **MAZI WMNS** FITNESS BAG

CAPACITY:

SIZE:



GRAY PINSTRIPE

FITNESS
ACCESSORIES

NEW PRODUCT

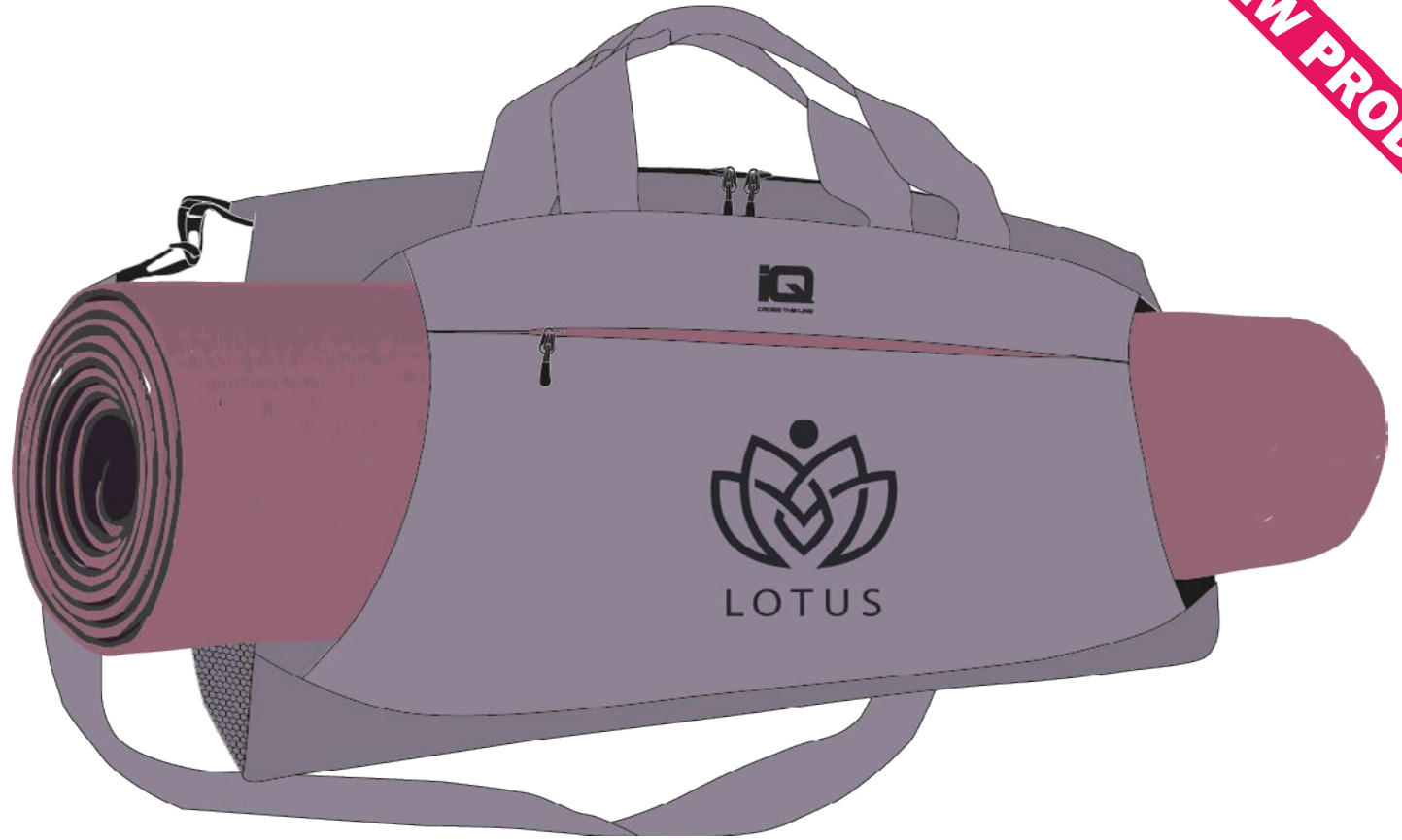
 **MOËT WMNS** YOGA BAG

CAPACITY:

SIZE:

YOGA
ACCESSORIES

NEW PRODUCT



PURPLE ASH



 **ONBOARD** FITNESS BAG

CAPACITY:

SIZE:

FITNESS
ACCESSORIES

NEW PRODUCT



BLACK



 **WARRIOR** FITNESS BAG

CAPACITY:

SIZE:

FITNESS
ACCESSORIES

NEW PRODUCT



IVY GREEN



 **CARRYON** FITNESS BAG

CAPACITY: 20 l

SIZE: 44 x 21 x 21 cm

WEIGHT: 0,4 kg

MATERIAL COMPOSITION:
100% POLYESTER



SHARKSKIN/MOONLIT OCEAN

 **MOTTI WMNS** FITNESS BAG

FITNESS
ACCESSORIES

NEW PRODUCT

CAPACITY:



BLACK



LOMME RUNNING WAIST BAG

SIZE: 95,5 x 4 cm

MATERIAL COMPOSITION:
85% POLYESTER, 10% ELASTANE, 5% ABS

SPECIFICATION:
- VISIBLE AFTER DARK



BLACK